

## 45x55cm Double Station Direct to Garment Printer with 4 Epson i3200 Printheads

Item Code: SIT-LFIP-YM4050-3



Mini Order: 1 set

Shipping Weight: ★★★★★

Average Rating: 396.0lb (180kg)

[Inquire Now](#)

### Overview

#### 45x55cm Double Station Direct to Garment Printer with 4 Epson i3200 Printheads

Equipment System	Hosonsoft
Print Head	4PCS EP SON i3200
Printing Size	450*550mm*2
RIP Software	Main Top
Color	W+CMYK
Max Resolution	720*1440dpi
Power	450W
Voltage	110V-220V
Computer System	Windows7/8/10
Data Port	Gigadit network port
Dimension	1800*2140*1750mm

# DOUBLE-STATION DTG PRINTER

---

Clear and fine print quality

One T-shirt can be printed in 1 minute



# FINE WORKMANSHIP, QUALITY ASSURANCE

The core components are all from big brands in the industry and high-quality accessories create high-precision products

## Other Printhead

Printhead is easy to be blocked, inkjet is uneven

## I3200 Printhead

Smooth inkjet and fine print quality

## Other Printhead

High failure rate and unstable

## Hason Motherboard

High overall stability

# HIGH DEFINITION PRINTING

Adopt I3200 printhead, print white first then color and the printing accuracy is higher than the image quality output, also the printed pattern is clearer and more exquisite



## DOUBLE-STATION

Single/double station free switching, fast printing speed  
and meet different printing need



## I3200 Printhead

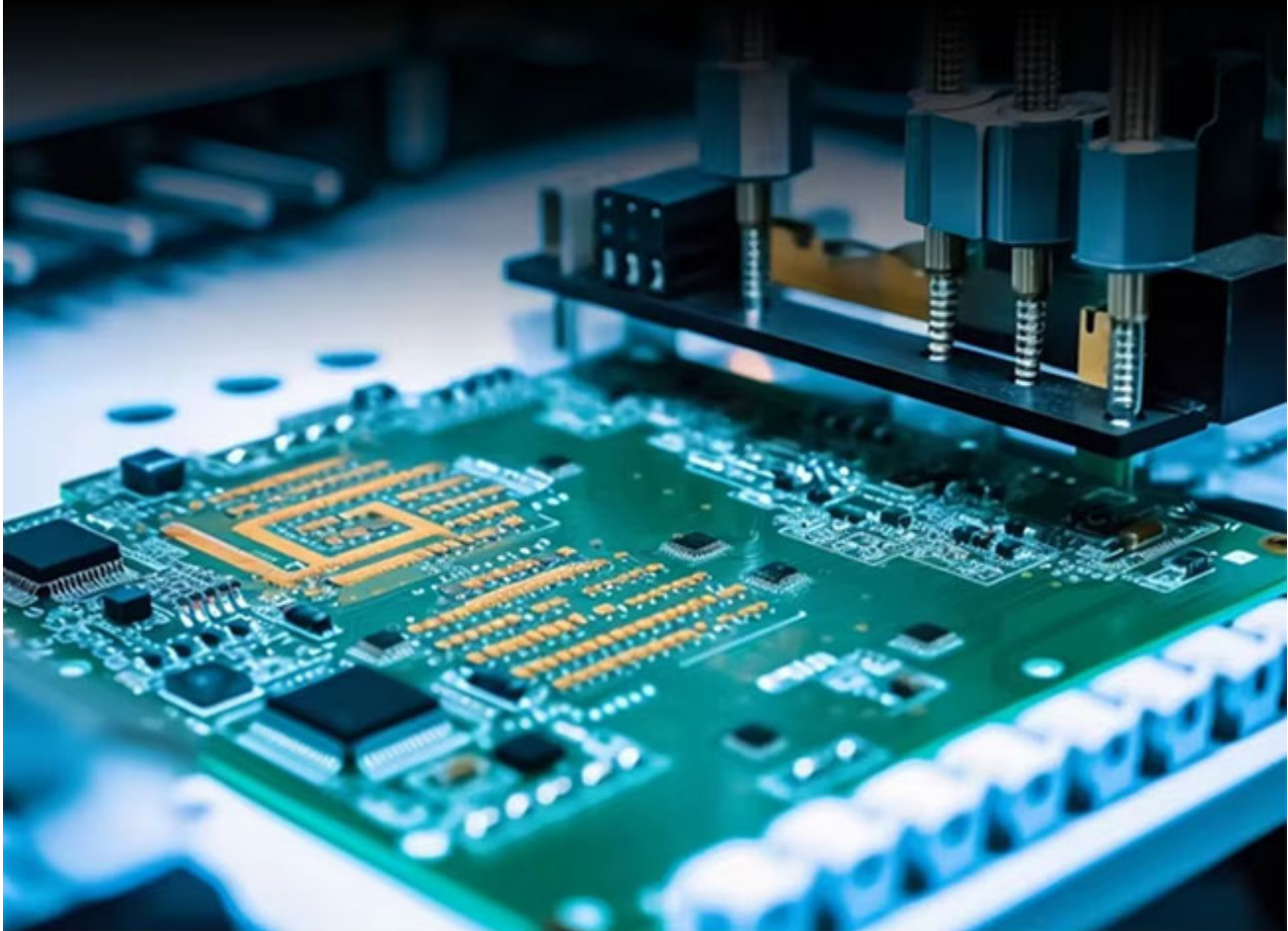
Small nozzle hole, high precision, fast speed, printing precision is higher than the image quality, the output is more exquisite, cost-effective, the overall performance of the printhead is improved by 50%





# HASON MOTHERBOARD

Highly stable board, 1:1 color reproduction, precise control of machine printing and temperature, simple operation and ensure color reproduction while ensuring machine stability



## PRODUCT INFORMATION

Printhead	I3200A1 x4
Table size	450x550mm
Resolution	720x1440 dpi
printing speed	50-60pcs/Hour
Ink Color	C/ M /Y/ K/W/O/R/G/B
Printing Software	Maintop / RIIN
Supported image formats	TIIF / PSD
Power	650W
Voltage	110V/220V
working environment	10-35℃ 30%-80%
computer system	Win7 / win10
Data Port	Gigabit Ethernet
Appearance size	1550 x 1990 x 1450mm
Package size	1800 x 2140 x 1750mm

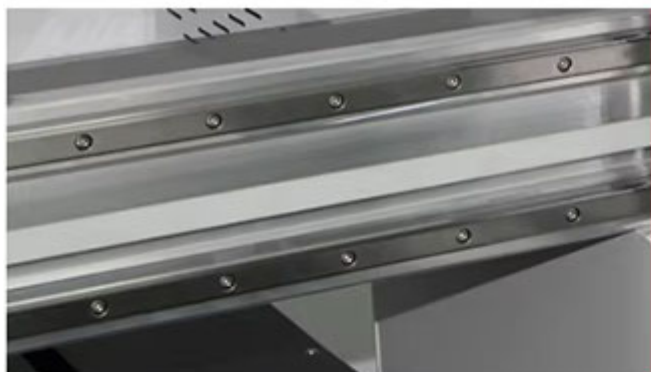


# PRODUCT SHOOTING





## PRODUCT DETAILS

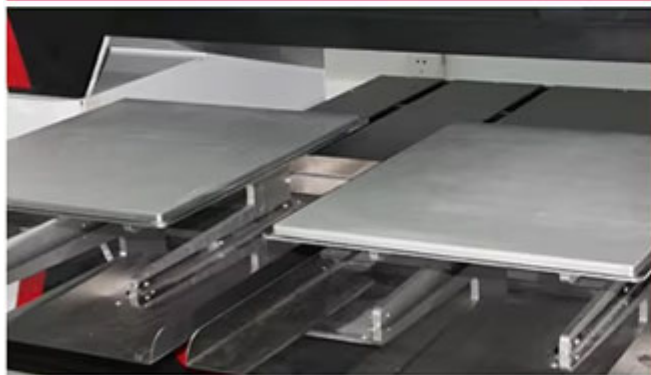


### CROSSBEAM SILENT DOUBLE GUIDE RAIL

Enhance the stability of high-speed printing and reduce noise

### EMERGENCY BRAKE SWITCH

Enhance printer security



### HIGH PRECISION WORKTABLE

The workbench is made of high-precision aluminum plate, which is not easy to deform and prints more stably

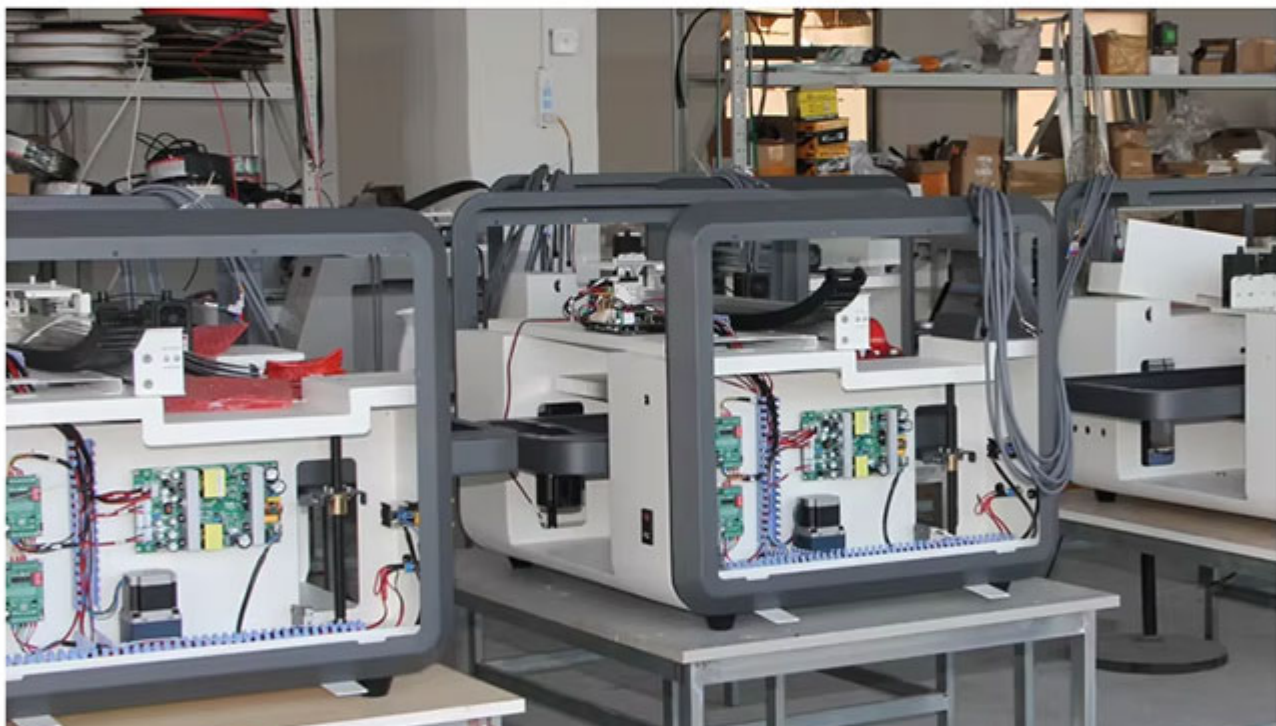
### INK CARTRIDGE

Automatic alarm when ink is low



# FACTORY

The production workshop is well-equipped to support a lot production of printers





## PRINT EFFECT





# Honor Qualification Certificate



