



Sign-in-China

Online Wholesale for AD & Signage Products

[???????? ???? ?????????? ?????? \(50??./??.,?????:127??\)](#)

Item Code: ACC-ROL-094



FOB Price: ???930/????.

Mini Order: 1 ????

Shipping Weight: ★★★★★

Average Rating: 0.4lb (0.17kg)

[Inquire Now](#)

## Overview



???????? ???? ?????????? ?????????? ??????????: ??? ????????? Epson, Roland, Mimaki, Mutoh, XAAR, Konica, Seiko, Spectra

??? ??????: ????????????, ??????????????? ? ?? ?????? ??????

??? ??????: 102?/??

??????? ??????????: 150?140?40??

???-?? ??./??: 50

?????? ??????:25??

???????? ??????: 15??

???????? ??????: 8.5??

??????????????:

## CAUTION

- Use up a cleaning swab in every cleaning, and do not reuse it in another time.
- Do not reuse the cleaning swab. This can result in loss of print quality.
- Do not use general cotton-tipped swabs. The cotton fibers can leave residue on the print heads.

### 1 Enter the MAINTENANCE menu

#### Cleaning monthly or more

Point 1 The side of the print heads

Point 2 Around the cap

Point 3 Around the wipers

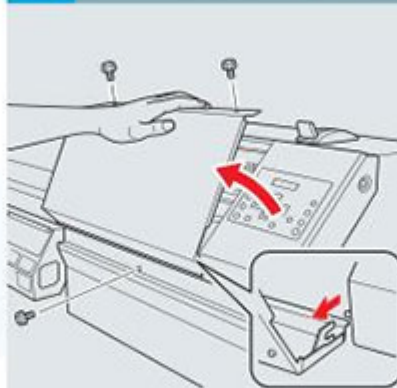
MAINTENANCE  
CLEANING

#### Replacing consumable parts

Point 4 Replace the wipers

MAINTENANCE  
REPLACE WIPER

### 2 Remove the cover(s)



\* Cover to be removed depends on the printer models.

### 3 Start maintenance operation

#### Cleaning monthly or more

Apply the cleaning liquid to the cleaning swab and clean each parts.



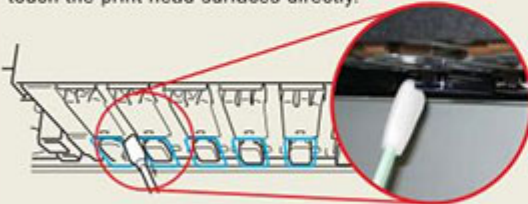
#### Replacing consumable parts

Replace the wipers if they are worn and deformed.

### Point 1 The side of the print heads

Using the cleaning swab, thoroughly remove any dirt, dust and/or ink from all four sides(front, back, right and left) of the print heads.

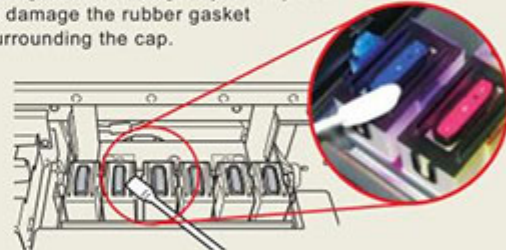
\*While working with the cleaning swab, be careful not to touch the print head surfaces directly.



- ! When dirt accumulates along the sides of the print head, print quality is impaired. This can also cause a premature print head failure.

### Point 2 Around the cap

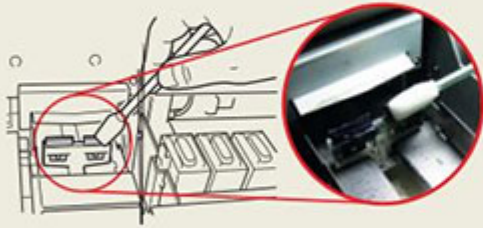
With the cleaning swab and tweezers, remove the dirt and ink around the cap. Only the tweezers should be used to remove the dirt and debris from the inner sponge area. Work gently and try not to damage the rubber gasket surrounding the cap.



- ! The accumulation of dirt around the cap gasket impairs the print head's seal to the cap. Over time, this problem can cause premature print head failure.

### Point 3 Around the wipers

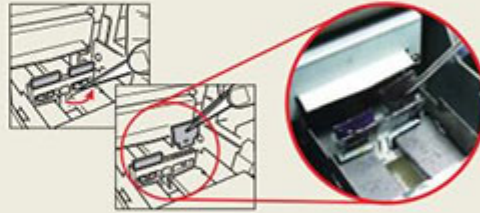
Remove the dirt around the wipers using the cleaning swab and tweezers.



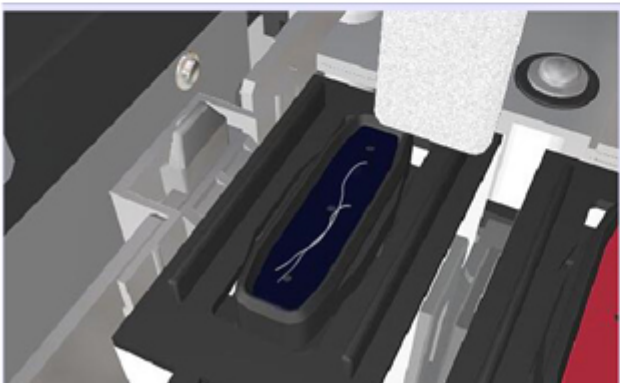
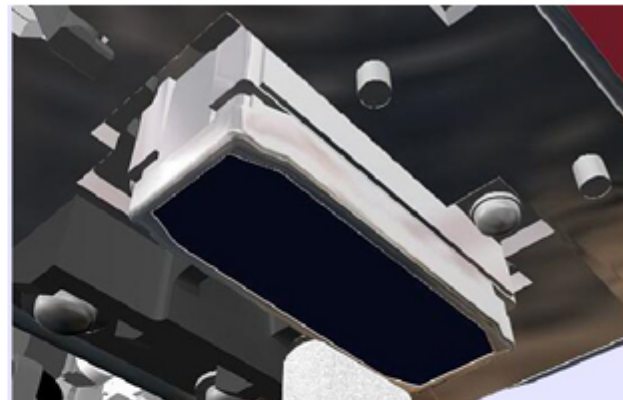
! Dirt around the wipers may lower the effect of the automatic cleaning and can also be a factor of damaging the print heads.

### Point 4 Replace the wipers

Replace the wipers if they are worn. First, use the tweezers to unlock them at the base of the wiper holders. Then, pull them off using the tweezers. Install new wipers, making sure that they are fully locked into place at the base.



! The effect of the automatic cleaning is reduced when wipers are worn. Check wipers on a regular basis to ensure their performance.

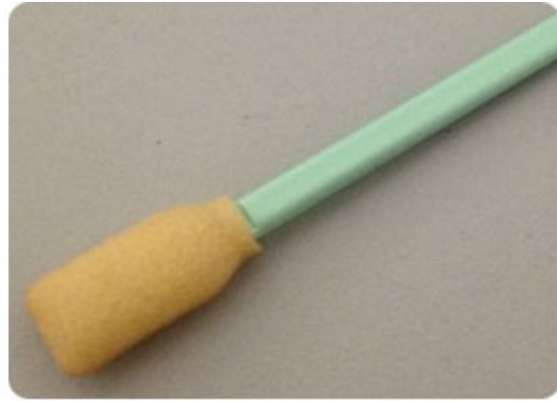




?????????:



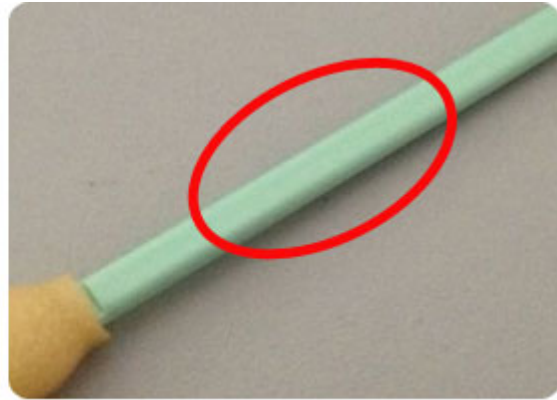
VS



????? ??????? ?? ?????????? ?????????? ? ?????? ?????????? ??????????????????. ?????? ?????????????? ?? ?????????? ? ?????????? ?????????? ???



VS

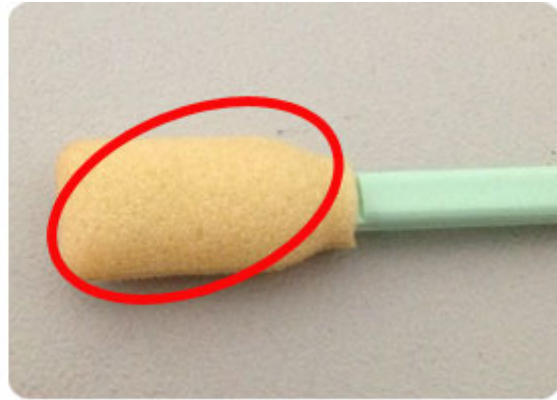


????????????? ?????????? ?????????????? ? ??????????????

????????????????? ?????????? ? ?????????????? ??????????



VS



????????? ?? ?????????????????????????????? ??????? ?????????? ?????????? ?????????????????? ??????????????, ?????????????? ? ??????????????

????????? ?????????? ?????????????? ??????????, ?????????? ?????? ??????????????????, ?????????? ?????????? ? ?????????? ?? ??????

?????????????:

1. ??? ?????????????????? ??????????????????, ?????????, ?????, ?????????.
2. ??? ?????????????????? ?????????? ?????????????????????????????.
3. ??? ?????????????????? ?????????????????? ?????????????????? ?????????????.
4. ??? ?????????????????? ?????????? ??????????

?????????????????:



Copyright © 1999-2012 by Beijing ChinaSigns Information Company Limited All Rights Reserved.

Email: info@sign-in-china.com Tel: +86 132 6410 3286 www.sign-in-china.com