



White Solvent PET Removable EZ Cling Pop 53.9 "(1.37m)

Item Code: BS-SOL-PET-54R-N



FOB Price: ????.31 140/???.

Mini Order: 1 ???.

Shipping Weight: ★★★★★

Average Rating: 24.2lb (11kg)

[Inquire Now](#)

Overview

EZ-Cling™

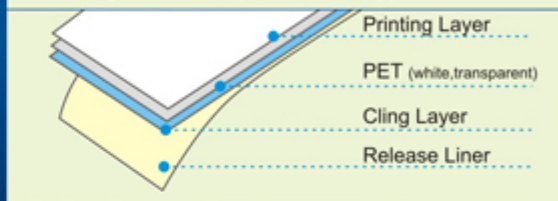
Not
removable Acrylic
-adhesive film

Not
electrostatic
film

**Cling to any
smooth surface**

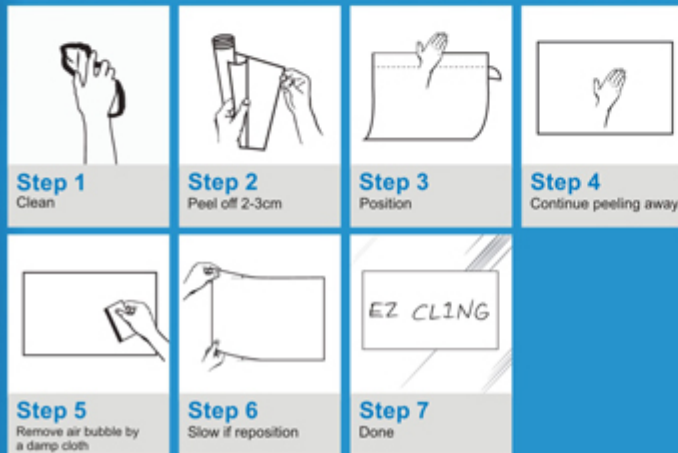
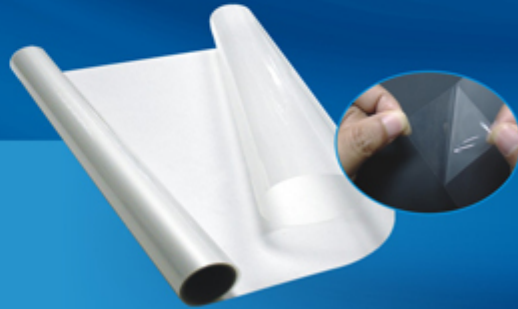
*Freely Cling.
Leave Nothing*

EZ-Cling Structure (Print Directly)



EZ-Cling is a kind of printable PET film with a micro-suction layer that can cling to any smooth surface without any residue when reposition.

- Environmentally friendly material ensure the effect with right viscosity but no glue touch feel
- No PVC, No acrylic-adhesive, No Hazardous Substances
- Easy to fix and change without adhesive or residue.
- High imaging outcome, suitable for (Eco)Solvent, UV, Latex.
- Suitable for glass/ auto windows POP graphics and back-light box ads requires frequent changes and in high changeable temperature outdoor use



For perfect effect, can spray some water on the base when fix EZ-Cling.

Applications and Storage:

- Print Way: digital inkjet print, with solvent or eco-solvent ink.
- Working Condition: Temperature range is from -20°C to 60°C (-4 to 176 degrees Fahrenheit).
- Storage Condition: Closed preserve avoiding sunlight, temperature range is from 10°C to 35°C, and relative humidity range is from 10% to 80%.
- Guarantee Period: 12 months under storage condition.

EZ-Cling™

Sign Display

Window Display

Wall Decoration



Application:



Window Display
Fashion & Sport



Promotional Poster
Retail Shop



Decoration
Coffee Shop



Advertisement
Telecom



Display
Restaurant





Copyright © 1999-2012 by Beijing ChinaSigns Information Company Limited All Rights Reserved.

Email: info@sign-in-china.com Tel: +86 132 6410 3286 www.sign-in-china.com