

## **NIVAJET1000I/1200I Chip Decoder Instruction**

We aim to provide solutions for customers with original NOVAJET 1000I/1200I to the following problems:

- 1.ink output counting limitation of printheads to the machine
- 2.high cost of replacing original printhead
- 3.rigid printhead requirement on certain color

### **Solution one:**

Step1: Replace the original main board to Kodak main board (Chinese version)

Step2: Install our chip decoder on the cartridge board

Cost : \$619 in total

NIVAJET1000I main board    1 pc    \$454

NovaJet Chip Decoder for 1000i/1200i    1 set \$165

### **Solution two:**

Step 1: Replace the original main board to Kodak main board (Chinese version)

Step 2:    Use cartridge board made in China, no need of chip decoder

Cost : \$857 in total

NIVAJET1000I main board    1 pc    \$454

Cartridge board made in China    1 pc    \$403

### **Solution three:**

Step 1: Send original main board in good condition to us, and we can upgrade it to Kodak main board (Chinese version)

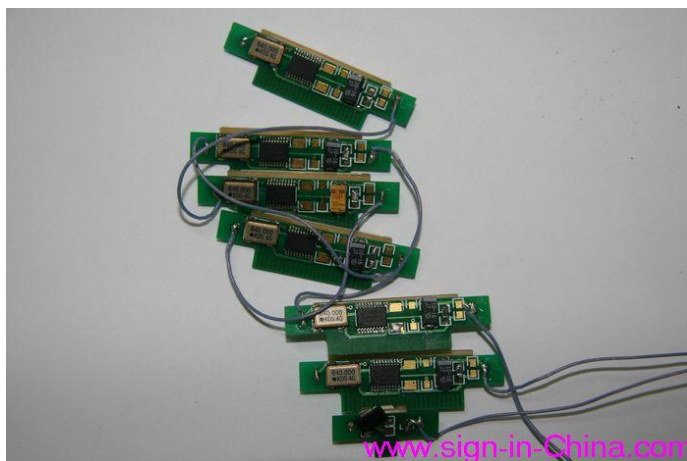
Step 2: Install our chip decoder on the cartridge board

Cost : \$487.5 in total

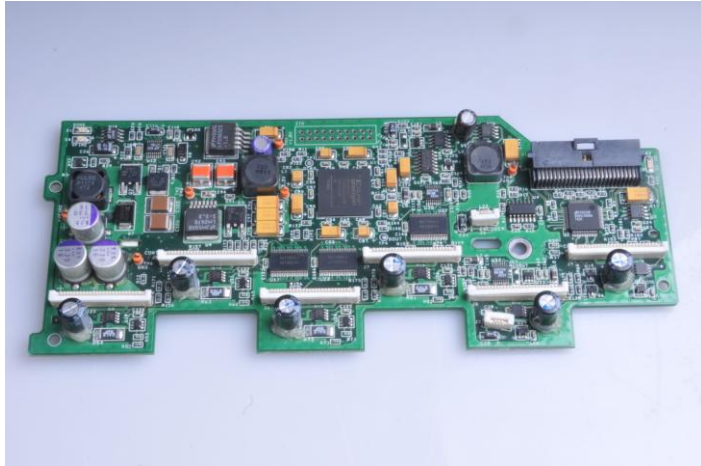
Upgrading fee	1 time	\$322.5
NovaJet Chip Decoder for 1000i/1200i	1 set	\$165

**Remarks:** Customers can select any solution above freely from us based on the actual situation.

### **Chip decoder installation as shown below:**



chip decoder



cartridge board without decoders



cartridge board with decoder



1000I 1200I MAIN board