

## 16" x 20" Auto Open Heat Press Machine

- . Magnetic Auto Open Feature.
- . Over-center pressure adjustment.
- . Digital time and temperature controller.
- . 16 x 20 inch Teflon coated upper heat platen.
- . Lightweight & Portable.
- . CE approved.

**Description:**

This Auto Open Heat press machine uses advanced spring air with high temperatures and pressures, to make an exact transfer on t-shirts, pants cloth, etc. Its upper heating board will rising up automatically when it reaches the time the alarm was set, alarming at the same time, so it is more convenient for transferring.

The heat press uses advanced spring air with high temperatures and pressures, to make an exact transfer on t-shirts, pillowcase, cloth, etc. The upper heating board opens automatically when it reaches the time the alarm was set.

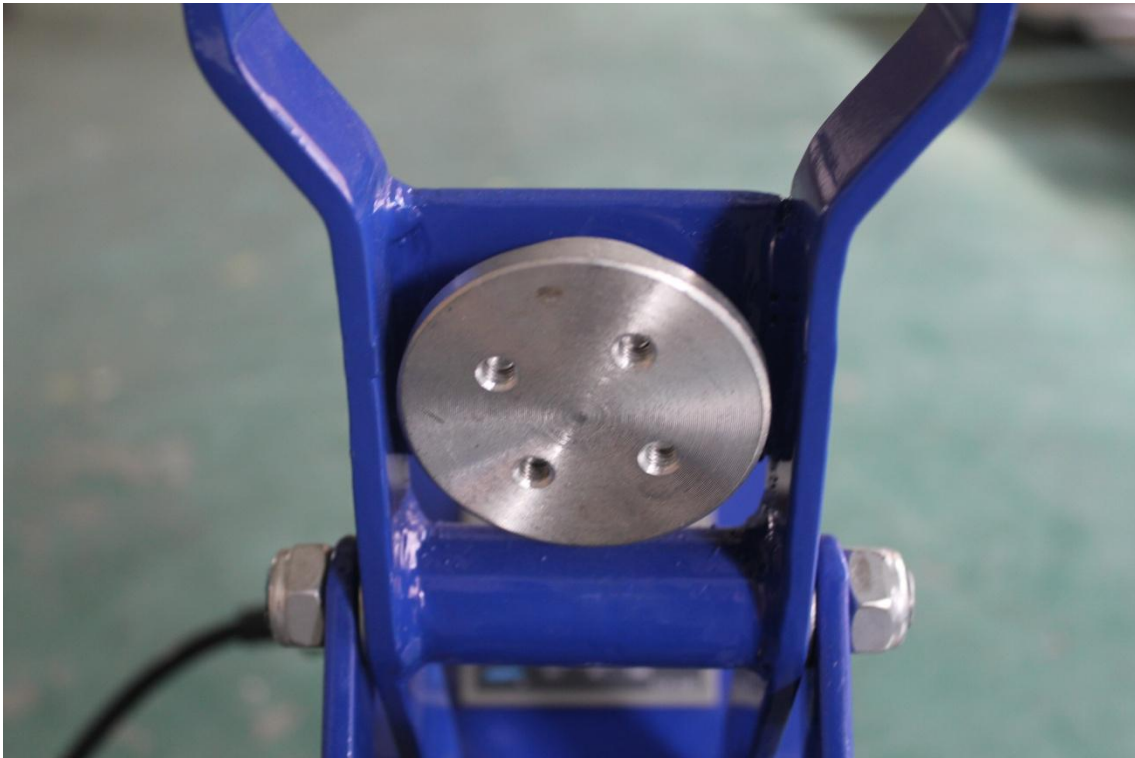
**Specification:**

Specification Form	
Model	HTM-3804C-II
Voltage	110V/220V
Power	1800W
Working Size	16.0"×20.0" (40×50cm)
Temperature Range	0℃-399℃
Time Range	0-999sec
Packing Size	29.1"×22.0"×19.7" (74×56×50cm)
Gross Weight	92.6lb (42kg)

**Solenoid for rising up automatically**



**Magnet**



**Time & Temperature Controller**



**Pressure Adjustment Button**



**Application:**





For T-shirt, Pillowcase, Puzzle, Mouse Pad, Metal Board, Fridge Magnet, Coaster, Slipper, Bag, Cushion, etc.



**T-shirt**



**Pillowcase**



**Rock Slate**



**Cosmetic Mirror**



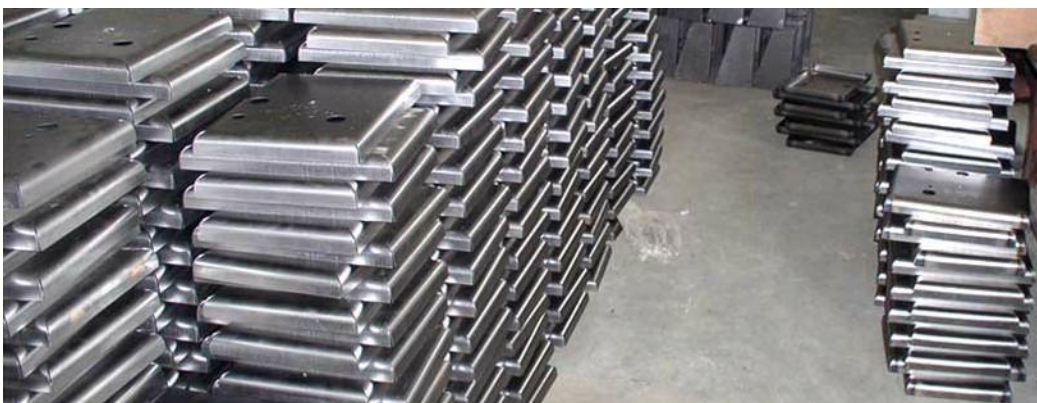
**Key Chain**



**Mouse Pad**

#### **Heat Platen Test:**

Each Single Copper sheathed heating rod is tested before it is cast in an aluminum alloy or Mica Sheet. These heating rods are comparable to those found in industrial ovens that heat up quickly, work efficiently and last many years.



#### **Finished Machine Test:**





- 1) Turn on the machine, let it heating up to 200 degree Celsius.
- 2) Keep the temperature stay at 200 degree Celsius for at least half an hour.



**Warranty:**

We provide support service for all of our customers to help their heat transfer business goes well.

- . Comprehensive guarantee for one year except the wearing parts
- . 24-hour technical support by email or calling
- . User-friendly English manual for machine using and maintaining

**About Spare Parts**

If the parts were broken during the guarantee period, we will provide a new part for free. We will send clients new parts once after they return the broken one. And customer can buy a new one from our company if the guarantee period is expired.

**Packing Details:**

Packing Size: 29.1"×22.0"×19.7" (74×56×50cm)

Gross Weight: 42kg



