

Name: UcanCam V10 Pro Version CNC Engraving Software for CNC Router G Code

With Operation Video disc, easy to learn and operate, suitable for Windows 7 & 8

Item Code: CS-UCANCAMV10-PRO

Overview	Specifications	Packing list	Warranty
----------	----------------	--------------	----------

Description:

- “Powerfully Simple, Simply powerful” is the tagline for UcanCam.
- UcanCam Pro is a powerful, flexible industrial strength software.
- UcanCam Pro = UcanCam Standard Version + Parametric + Waveboard + Surface (CAD & CAM) + Interactive Nesting + Plate / Remnant Management +Constraint Driving.
- UcanCam Pro includes all the design, layout and machining functionality demanded by commercial shops and users, while remaining incredibly easy to use and affordably priced. UcanCam Pro is a complete solution for 3D Model Making (CNC routing, engraving and milling), Rapid Prototyping and Sign making, Wood Carving (Custom fireplaces, door panels), Stone cutting (Memorials, Commemorative plaques).
- As well as the current mainstream UcanCam Pro's 3D Wave board, for this pro offers all the tools you need for surface waveboard designs' machining, such existing wave-shaped designs as lines, curves, waves can be created on MDF boards. In addition, Original and unique designs and even users' special requirements for cutting characters or graphs on finished wave boards can also be grabbed. Various artistic effects can be achieved through different treatment of MDF boards through UcanCam Pro.

New features:

1. Support Python script to develop UcanCam. You can use Python to create your application.
2. Firstly release 64 bit UcanCam, the installation file includes 32 bit ucanCam version and 64 bit ucanCam version, which can install the compatible version according your PC OS version (32/64 bit).
3. Set the background color of window.
4. In 3 points circle creation, add the method (point, point, tangent) circle, (point, tangent, tangent) circle, (tangent, tangent, tangent) circle.
5. The toolpath is associated with the drawing. When the position or sharp of drawing are changed, double click the toolpath to regenerate the toolpath.
6. Modify the toolpath name:
 - 1).toolpath attribute dialog in design central.
 - 2).toolpath export dialog.
7. Add the button "copy", "cut", "paste" in text popup menu.
8. Add the oscillation option in profile toolpath--adding oscillation in the Z axis along your contour toolpaths,uses more of the cutting length of the tool, and can reduce tool wear in that axis.

This is especially useful when cutting thinner materials or laminated materials such as kitchen counter tops.
9. The toolpath regeneration.
10. Add two tool types--drill tool and tape ball tool.
11. Surface finish toolpath: emit finish.
12. Dynamically drag text on curve.
13. The toolpath can be mirrored, rotated.

14. Modify font type for mutil text at the one dialog.

Enhancement:

1. The display video system: Make it faster, and eliminates flicker.
2. "Replace" in text edit: When there are selections, replace text in selection; if no selection, replace text for all.
3. Auto Nesting: When the part cannot be put in the sheet, the part will be not moved to avoid the contact with other part.
4. The faster speed for surface toolpath creation.
5. Surface parallel finish toolpath.
6. The drawing for the selected char in text edits command.

IDEA FOR DOING:

Ucancam V10 3D engraving software can help you do anything, such as:

- Light-box advertisement.
- Folding screen door.
- Make sign mark through Area Clearance.
- Insert and inlay.
- Image engraving and stripping.
- Relief, etc.

You can develop your creation by this software; it can make your dream come true!

SYSTEM REQUIREMENTS:

Operation system: Windows2000/XP, Windows 7 / 8

CPU: Intel Pentium II, 300 or above, or same-level CPU, (preferable P4 2.4G or above)

RAM: 128MB or above, preferable 256MB

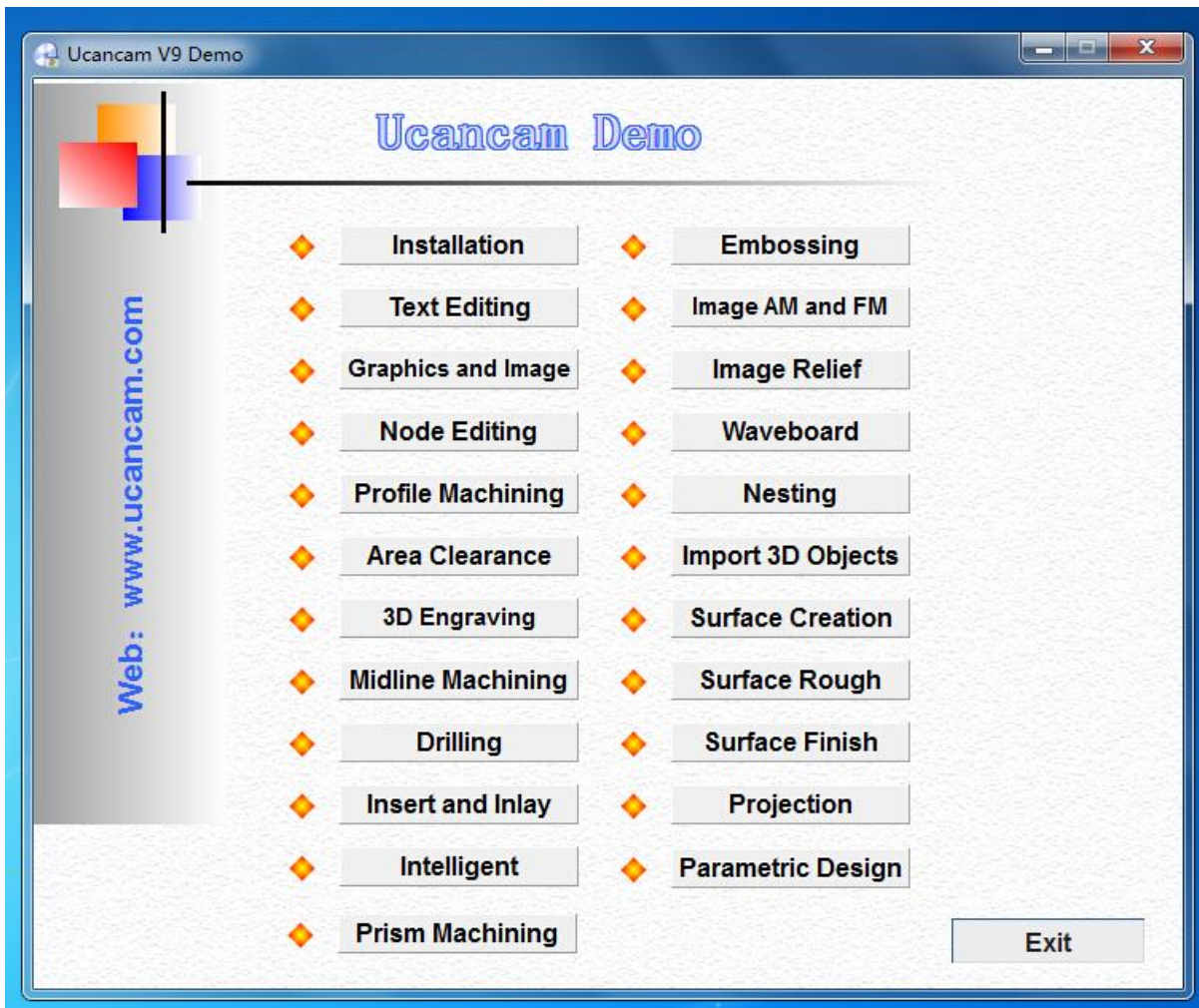
Hard disk: 500M

Monitor display: resolution 800 x 600, 256 colors, preferable 1024 x 768, true color

CD drive: CD-ROM/DVD driver

Port: available with Mouse port and USB 2.0 port

INSIDE THE VIDEO DISC:

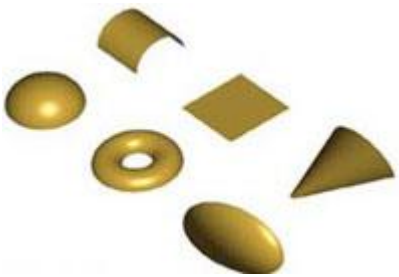


CAD



File formats supported:

import the Iges,Stl,ObjA file



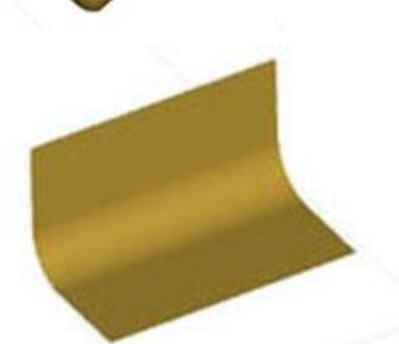
Standard surfaces creation

Plane, sphere, cylinder, cone, ellipsoid, torus



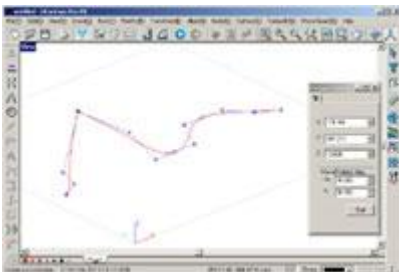
Free surfaces creation

Loft, rule, and sweep along a path with edge matching, sweep along two rail curves with edge continuity, revolve, blend, patch.



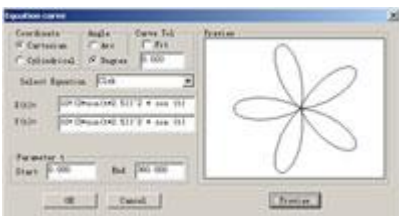
Surfaces edit

Chamfer, fillet, extend, trim, untrim, split surface by isoparams



3D Curve creation and edit

2D curve can be converted into 3D curve, then you can drag and edit the node of the curve in 3D view, so that to modify the shape of the curve.



Equation Curve

The software can automatically generate the curve described in the equation like this:

$$\begin{array}{ll} X=f_x(t) & R=r(t) \\ Y=f_y(t) & \text{or} \quad \theta=\theta(t) \\ Z=f_z(t) & Z=Z(t) \end{array}$$



Automatic Nesting

Automatic Nesting can improve material utilization by re-arranging texts, graphics. Its automatic and fast publishing can save us lots of material.

Parameters can be set, such as kerf width, cutting margin compensation,

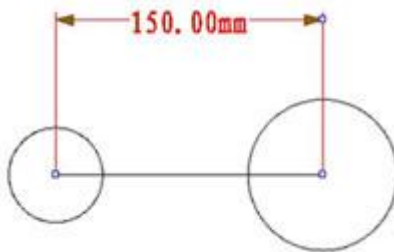
multiple blank nesting modes, and the precise calculation, which can greatly improve the work efficiency.

Interactive Nesting



Interactive Nesting

After setting the parameters of kerf width, cutting margin compensation and Iteration count; You can automatic nest the parts, and then you can reselect this parts, and manually nest the parts, user-interactive positioning the parts, dragging, rotating and mirroring. This function support drag, drop and bump features.



Parametric

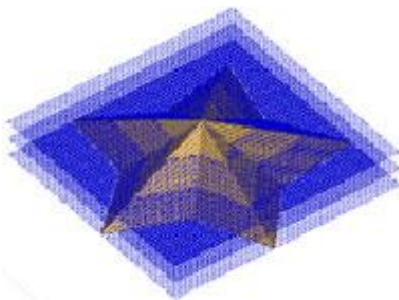
Geometry constraint and dimension constraint.

CAM



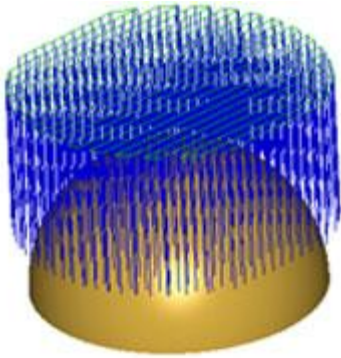
Toolpath Project Machining

Toolpath projection onto a complex surface, to complete engraving of text, graphics on surfaces. During projection, the original relative height can be kept.



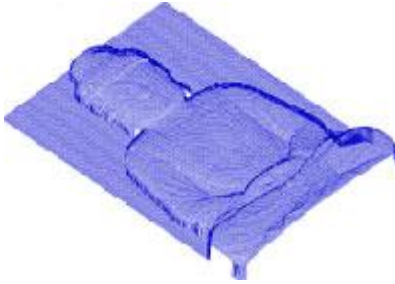
Surface Rough Machining--Parallel

Rough machining is for making the general work pieces through rapid removal of excess materials. Rough machining tries to achieve the maximum cutting efficiency while considering the actual situation like blank shape, workpiece shape, machining materials, machining conditions. During the machining, Rough milling can be layered, support equal cutting technology and control machining allowance.



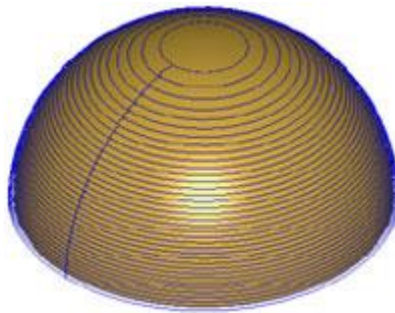
Surface Rough Machining--Plunge

Rough Plunge create drilling-type tool motions for the fast removal of high volumes of material. This procedure is an economical way of deep machining cores, cavities, high shoulder slots and straight or sloped walls. This is a High Efficiency Cutting (HEC) procedure. Plunge mills transfer cutting forces axially, minimizing vibration and deflection.



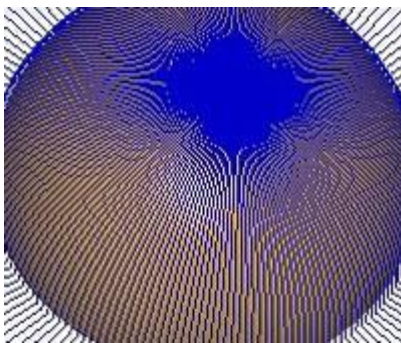
Surface Finish Machining--Parallel

Surface Milling often makes finish parallel machining with Ball Nose. Parallel machining means the toolpath is parallel. Toolpath machines the entire surface through parallels. The linear cutting machining can be done in any direction or of any angles, but all the surface machining toolpaths must be parallel. In most cases, parallel toolpaths can cut out the best surface.

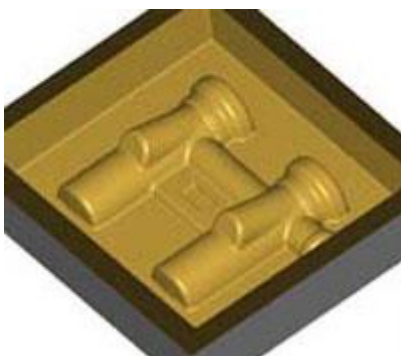


Surface Finish Machining--Contour

Finish Contour machining can promote the machining speed in the same horizontal plane with Z-axis invariable. Besides, partial contour can also be carried out via limiting the machining range and depth. Toolpath is fitted into arc which reduces the G-codes and improves machining efficiency. This is mainly used for high-speed milling machines.

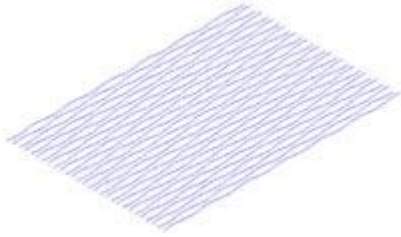


Surface Finish Machining--Emit



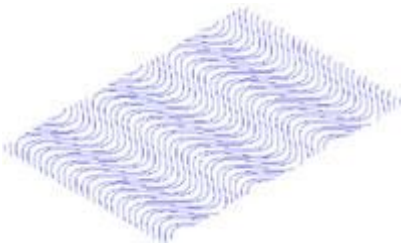
Machining Simulation

Machining Simulation of milling process can be a true representation. Material texture can be set.



Straight Texture

Straight texture can be directly generated by selecting different tools and by setting texture sizes, toolpath intervals and undulating lines.



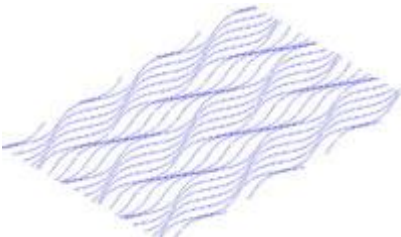
Curvilinear Texture

Curvilinear texture can be directly generated by selecting different tools and by setting texture sizes, toolpath intervals, sample lines and base lines.



Straight Wave

Straight Wave can be directly generated by selecting different tools and by setting texture sizes, toolpath intervals, sample lines, base lines, and wave angles.



Curvilinear Wave

Curvilinear Wave can be directly generated, by selecting different tools and by setting texture sizes, toolpath intervals, wave angles, fold height, sample lines and base lines.



Silk texture

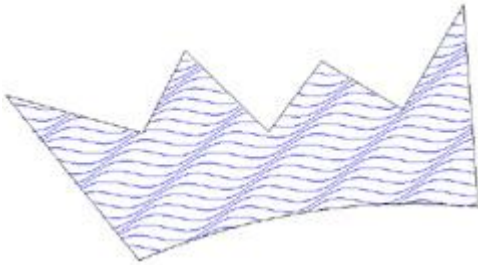
Hair-shaped effects can be achieved through the silk texture machining on regular or irregular, scattered or disorderly straight lines and curvilinear lines in three ways: middle wider, start wider and end wider.



Fan texture
Straight Wave



Fan texture
Curve Wave



Texture trimming

Designed texts and graphics can be cut out from the generated wave board toolpath .This enables waveboard to integrate with other carving patterns.

Installation:

1. Double click the "wtSetup.exe" of the CD files, when the dialog boxes present, click "OK" or "next" to all. After installation, you can use an "Ucancam" shortcut icon on your desktop.
2. Insert the USB dongle in the USB port.
3. Double click "Ucancam" icon on your desktop, you can run the software.
4. For more help, please refer to the help (by pressing F1) in Ucancam.

Fix:

1. Lead in\lead out error in profile toolpath.
2. Spline error in dxf import.

Overview	Specifications	Packing list	Warranty
----------	----------------	--------------	----------

Wooden Box: There is total one box.

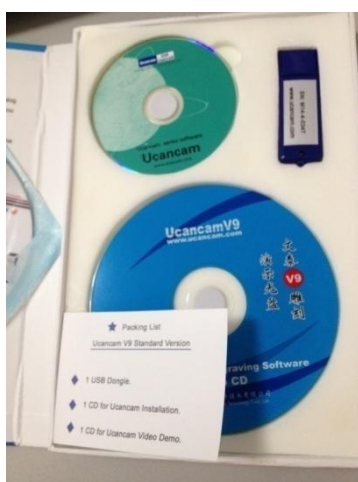
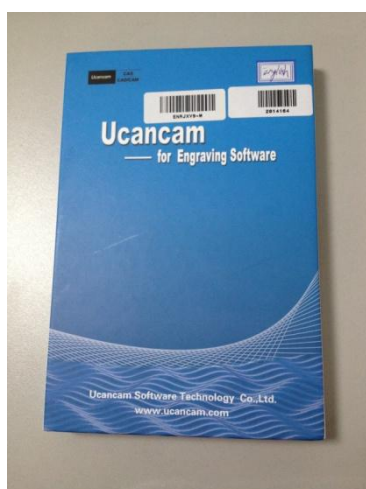
Product Dimension	190mm x 145mm x 15mm (7.5" x 5.7" x 0.6")
Net Weight	160g
Package	Carton box
Packing Size	200mm x 155mm x 20mm (7.9" x 6.1" x 0.79")
Gross Weight	200g

Packing List:

1 USB Dongle

1 CD for UcanCam Installation

1 CD for UcanCam Video Demo



Overview	Specifications	Packing list	Warranty
----------	----------------	--------------	----------

Comprehensive guarantee for 1 year except the wearing parts

24 - hour technical support by email or calling

User - friendly English manual for machine using and maintaining

Satisfaction Guarantee

For the items other than consumable products sold via www.Sign-in-China.com, we provide 12 months warranty after delivery. All the extra parts for equipment can be purchased from www.Sign-in-China.com.

We offer 14 days 100% satisfaction guarantee on all our machines. If you are not satisfied after receiving an item, Sign-in-China.com promises that, within 14 days after actual delivery of such an item, you are allowed to return the item to us and get complete refund, provided the returned item does not affect its subsequent re - selling and you also undertake the charge of returning delivery.