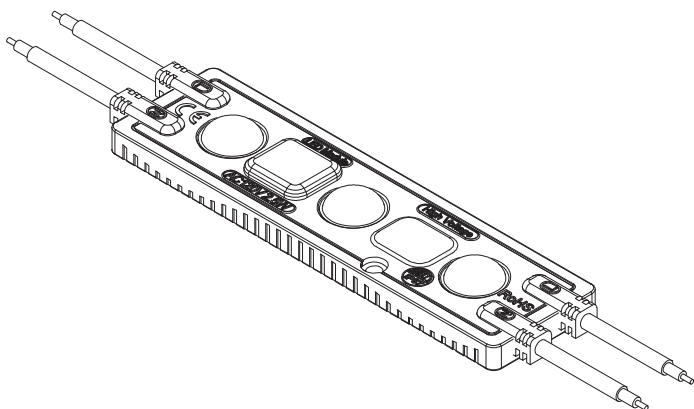


AC1 20V High voltage module-Terminator II User Manual

Model # : MFW8A2D



Please read the manual carefully before using it

Please keep manual after reading

The appearance of module is subject to real products

Our company reserves the right to interpret the instructions

In case of updating in technical without notice

CE RoHS

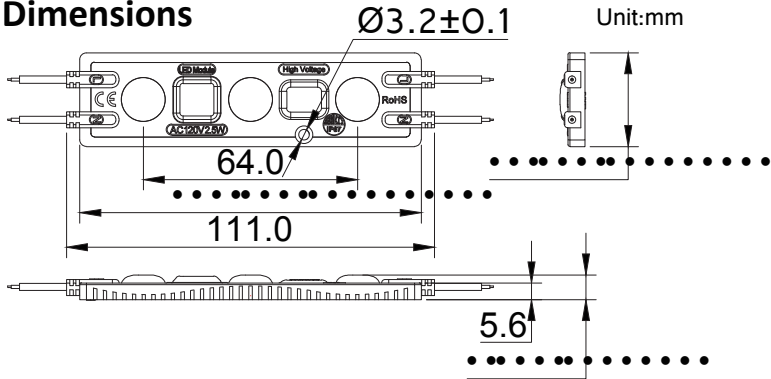


CQC LM80




Specification

Series:	Terminator II
Model #:	MFW8A2D
Color:	White
Rated Power(W/PCS):	2.5
Rated Voltage(V):	AC120V 60Hz
Working Temp(°C):	-20~55
Storage Temp(°C):	-40~80
IP Rating:	IP67

Dimensions

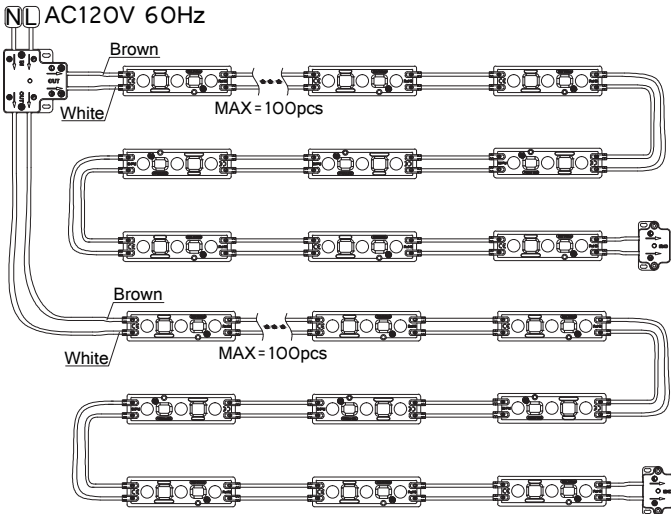



Warning(please read manual before using it)

-  It is prohibited where it is with prohibition marks,otherwise it will cause damage to product or endanger personal safety.
-  Please operate it strictly in accordance with requirement wherever with the mark since it is related to safe use and users' safety, otherwise it may cause damage to product or endanger the personal safety.
-  Please pay high attention to it wherever with the mark,otherwise it may cause damage to product or others.

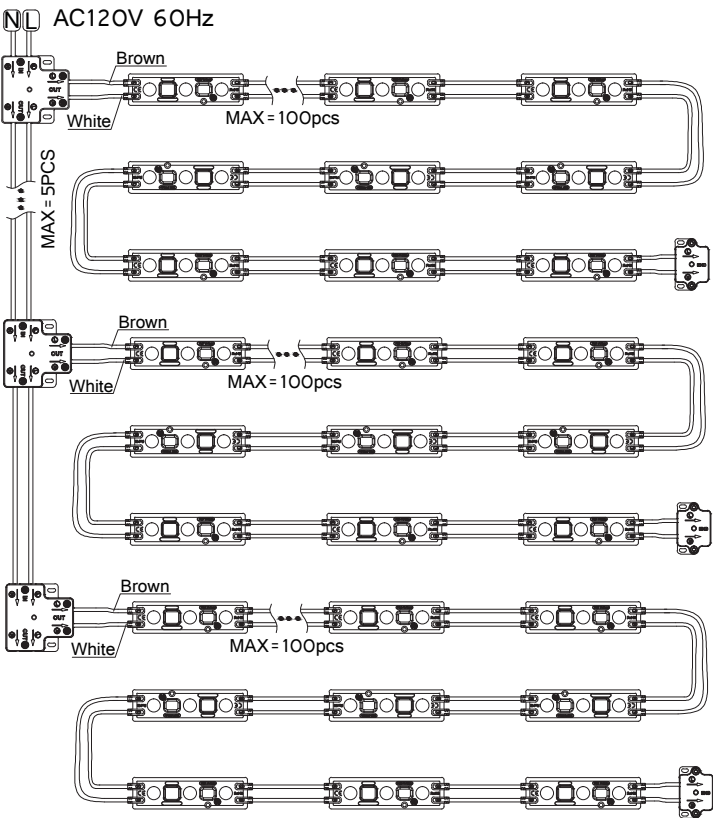
Installation and connection drawing

Solution I



-  250W/string with 100pcs at max for one string. it is not allowed to connect above 100pcs/string.

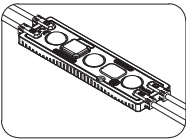
Solution II



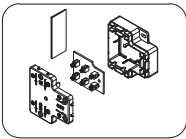
⊘ 250W/string with 100pcs at max for one string. it is not allowed to connect above 100pcs/string; The max connectable qty of 3-way connector on main wire is 5pcs and any more is prohibited.

Accessories and Tools

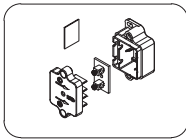
1.Accessories



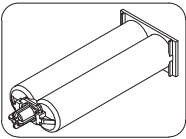
Led module



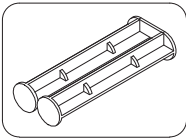
3-way connector & 3M glue



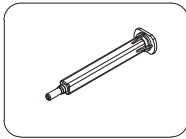
End connector & 3M glue



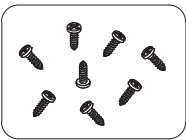
AB Syringe



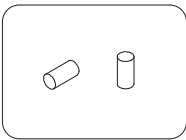
Push rod



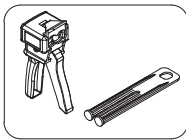
Syringe nozzle



Screws

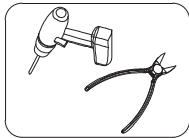


Silicon glue tape

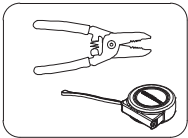


Glue valve

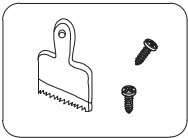
2.Tools should be provided by customer



Electric drill &
Side cutter



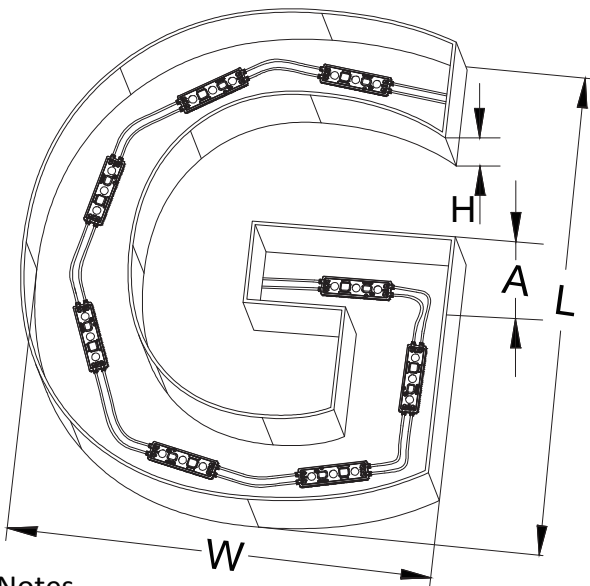
Wire cutter &
Tapeline



Cleaning brush &
M3 Screw

Application project
Advertising channel letter

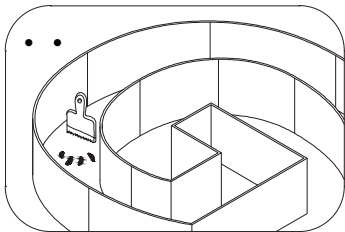
Dimensions				Dada for module			
Character Width A (mm)	Depth H (mm)	Size LxW (mm)	Aear (m ²)	Row distance (mm)	Total Qty (pcs)	Installing density (pcs/m ²)	Lux range on surface (lux)
110	100	885x507	0.45	200	9	20	2800~3300
130	120	1060x665	0.7	230	12	17	2200~2700
152	150	1225x770	0.94	270	16	16	2000~2400
203	200	1650x1125	1.86	300	28	15	1600~2000
253	250	2012x1430	2.88	320	40	14	1500~1800



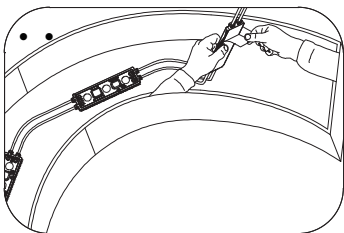
Notes:

- 1.The example channel letter with 3.00mm acrylic plate and light transmittance of 54%.
- 2.The dimension of this channel letter : 640.0*750.0mm。
- 3.Above data is just for reference.

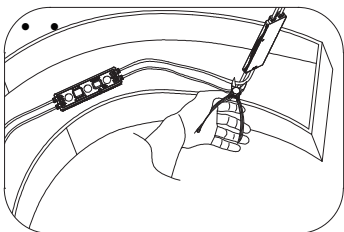
Installation(Do not operate when power is on)



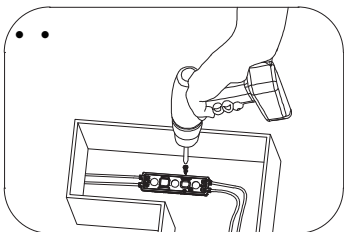
◆ please clean the installing surface 。



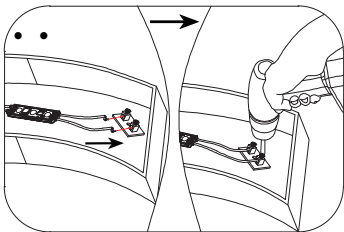
- ◆ please peel the release paper at back of module and fix it at right place of the surface.



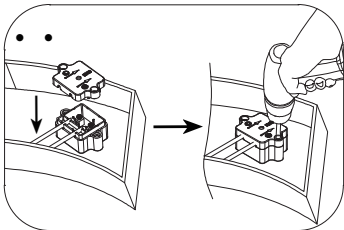
- ◆ Cut off the module at what need and remove the skin of wire with length of 5.00mm.



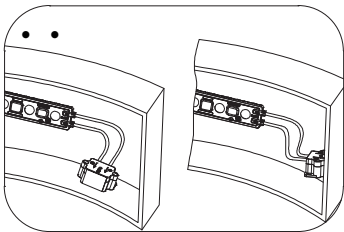
- ◆ Adjust the module to best place and press it with double-side tape, then fix them with M3 screws.



- ◆ Insert the end of wire in to terminal of PCBA in end connector according to arrow direction silk-screened on PCB , tighten the screws.



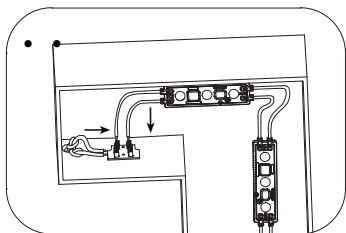
- ◆ please press PCBA at bottom of end connector,cover with the cap, then tighten screws.



- ◆ According to the actual situations:
 - When end connector are installed at bottom of lighting box, please fix them with 3M glue and tighten the screws .
 - when the end connectors installed at side of lighting box, please fix them with 3M glue.



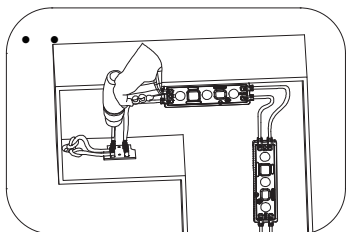
Mount the connector to the side of lighting box and press it continuously for 8 to 10 second to avoid falling down.



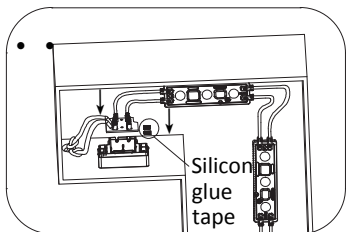
◆ Please insert the head of wire into terminal of PCBA in 3-ways connector according to the arrow direction silk-screened on PCBA.



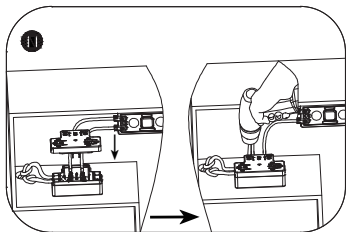
Power is off before connecting external power cable. it is prohibited to operate when power is on.



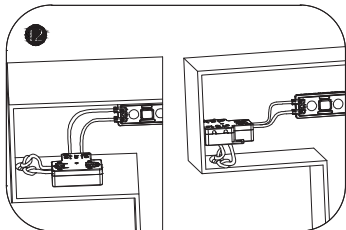
◆ Use electric drill to lock connector terminal and wire through screws.



◆ Please press PCBA at bottom of 3-ways connector, stuff the silicon glue tape into groove at end of connector.



◆ Cover 3-ways connector with cap and tighten the screws.

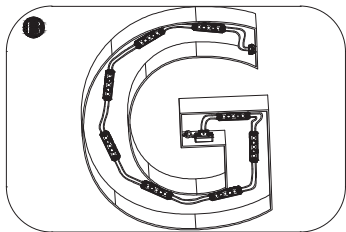


◆ According to the actual situations:

- When 3-way connector are installed at bottom of lighting box, please fix them with 3M glue and tighten the screws .
- when 3-way connectors installed at side of lighting box, please fix them with 3M glue.



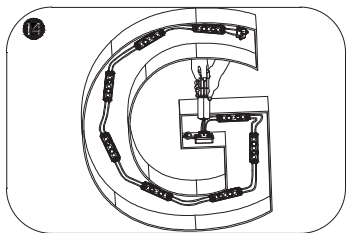
Mount the connector to the side of lighting box and press it continuously for 8 to 10 second to avoid falling down.



◆ Please hang the channel letter on the installing surface.



According to actual installation needs,the end connector can be injected with glue first.After silicon glue is dry until four hours,then hang channel letter on installing surface.

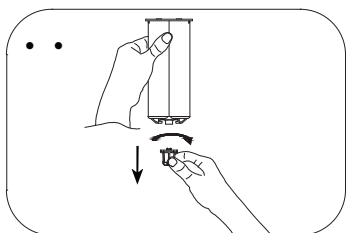


- ◆ Please aim syringe nozzle to the hole, inject silicon glue into connector. Check all wiring and make sure all is correct then make power on until silicon glue is dry after four hours and complete installations.

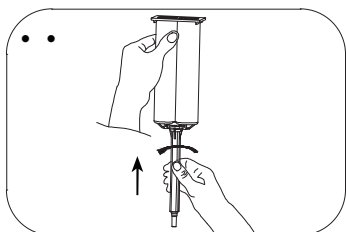


It is about 30 minutes to operate for silicon glue. It needs to inject glue into connector slowly and uniformly until all components are covered. If the speed is too fast, the air inside is not easy to discharge.

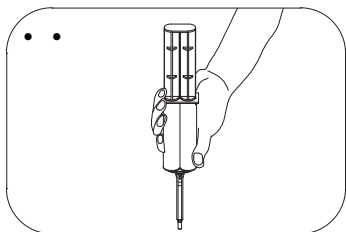
3. AB glue syringe installation



- ◆ The tip of AB glue syringe is rotated 90 degrees counterclockwise, then pull it down firmly.

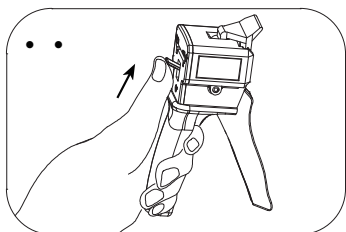


- ◆ Please aim syringe nozzle to AB glue syringe, mount and rotate 90 degree clockwise to lock them.

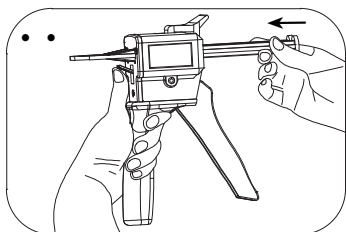


- ◆ Inset push rod into AB glue syringe and finish installation, then start to use it .

4. Glue valve installation



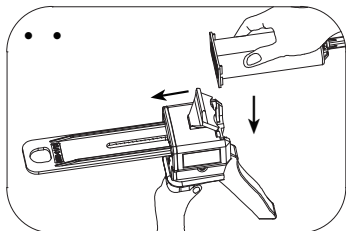
- ◆ please push block rod at tail of glue valve upward.



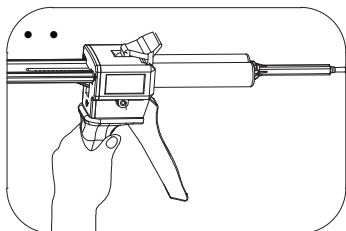
- ◆ Hold down the block rod, insert push rod from front into glue valve until be inside completely.



Tooth ripple of push rod should face down.



- ◆ please push glue valve's buckle up, then aim AB glue syringe to groove of glue valve, press it at its bottom.



- ◆ Please start to use glue valve once installation is completed.

Prohibition items

- ◆ It is prohibited to disassemble module to avoid electric shock and endangering personal safety.
- ◆ It is prohibited to immerse module in water, lighting box at semi-outdoor use only.
- ◆ It is prohibited to operate when power on. The installation must be completed at power-off to avoid electric shock.
- ◆ It is prohibited that live wire(brown) and null wire(white) at end of module are shorted.
- ◆ It is prohibited to excess max countable qty to avoid damage to products.

Warning items

- ◆ Brown wire on module is Live line and white wire is null line, corresponding to L and N of utility power.
- ◆ Main wire of 3-ways connector is standard 2.5 P wire, where can connect 5 pcs 3-ways connector at max.
- ◆ Where outer wire skin are damaged, it must wrapped with waterproof electrical tape and be well insulated.

Notes Items

- ◆ AC input range: AC100V-130V 60Hz and it need comply with user instructions for installation connection.
- ◆ Once module strings are cut off, the head must be electrically connected with 3-ways connector while the end must be electrically connected with end connector to avoid electric shock.
- ◆ Double-side tape only help position modules and adjust to the best location during installations. The module need to be fixed with M3 screws or glass glue after positioning.
- ◆ The data in the manual is based on the sample testing and it may vary with actual goods. The real testing data shall prevail.

Common troubles and its solutions

Troubles	Possible reasons	Solutions
All leds are off	• Utility power is not available	Check if the wire is connected with Utility and re-power it
	• AC120V input wire is not connected	
Some modules are off	• Output wire of 3-way connector is not good connection	Find out the unconnected and make it in good connection
	• Circuit short causes FUSE broken	replace new module
LED flashing	3-way connector is not in good connection	Find out the unconnected and make it in good connection

Warranty Statement

- ◆ Warranty: 5 Years.
- ◆ If failure to follow instruction shown and improper operation caused a circuit short and damage to module, it will not be included in warranty.
- ◆ The picture in manual is drawing and actual product shall prevailed.

Make it simple but significant.