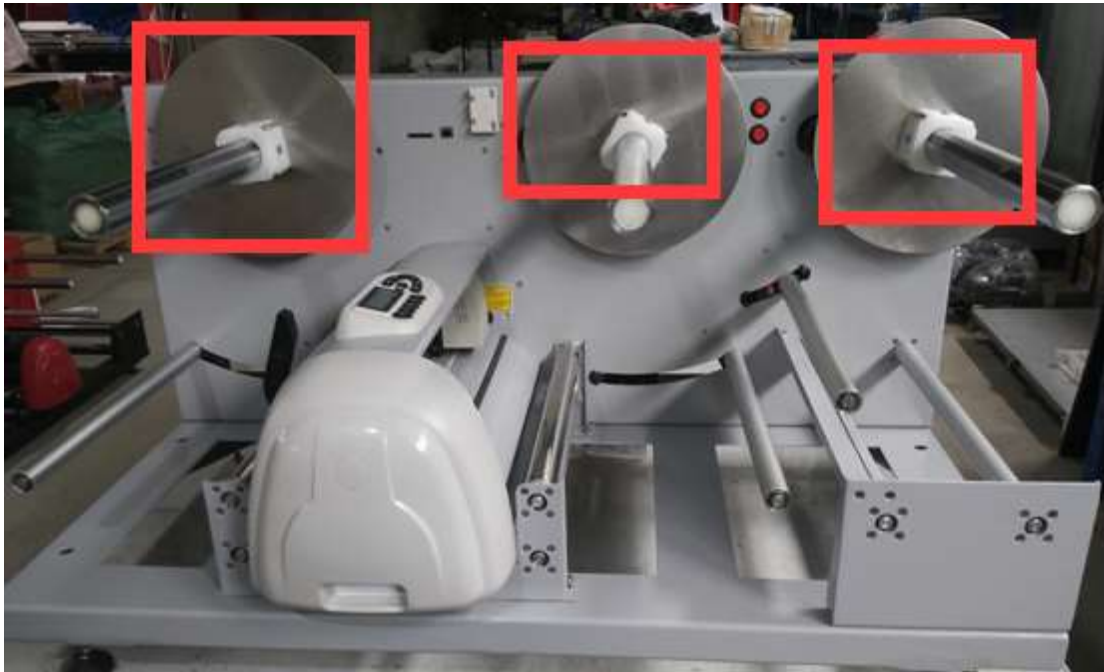


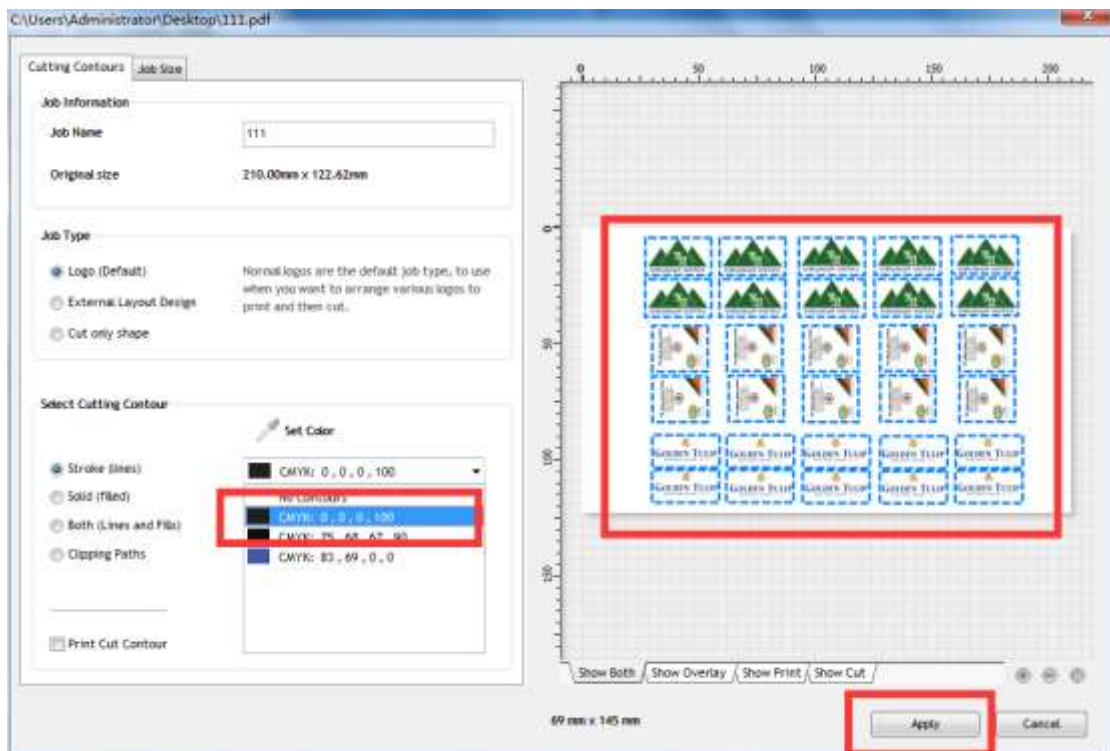
Step1 : Installing iron plate



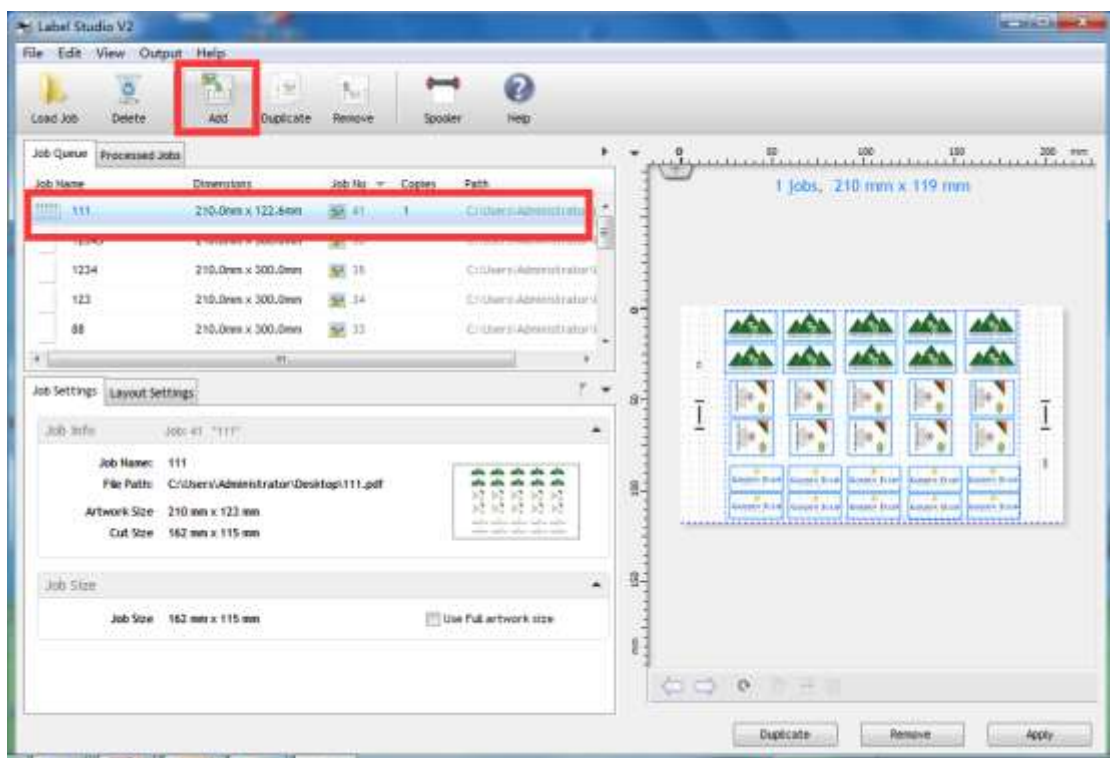
Step 2: Install blade and test knife pressure

Please refer to another PDF document

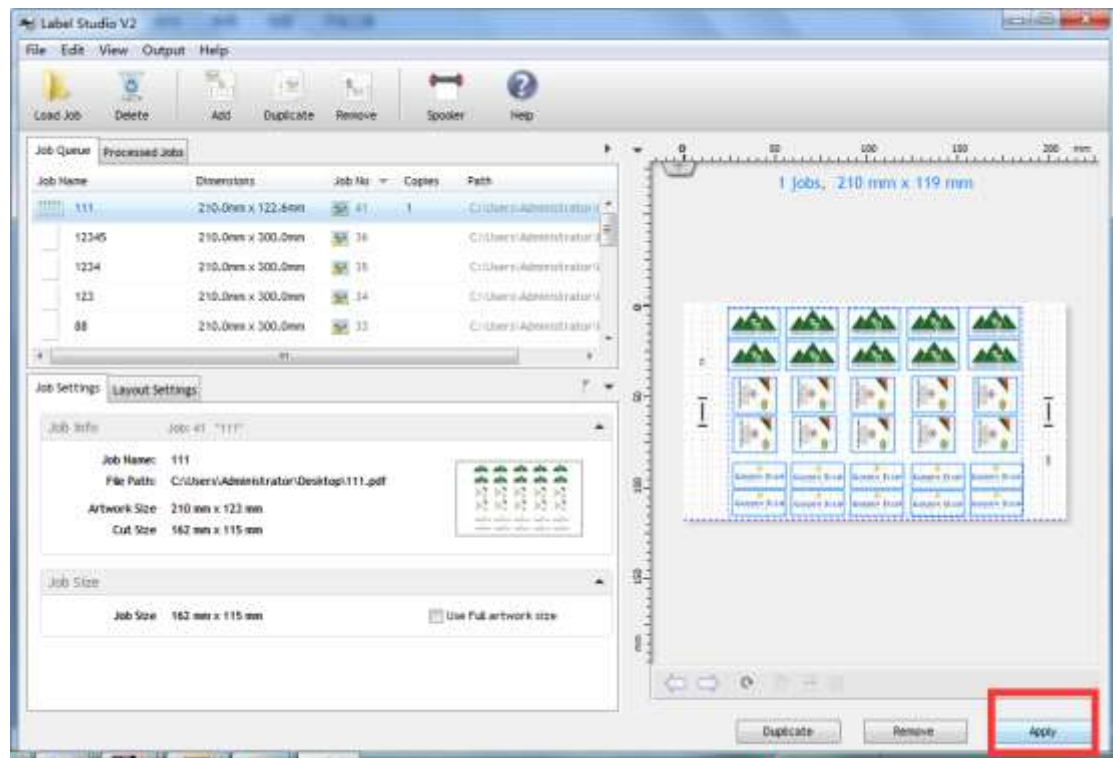
Step 3: open your label studio, import your label (the label includes image and outline)



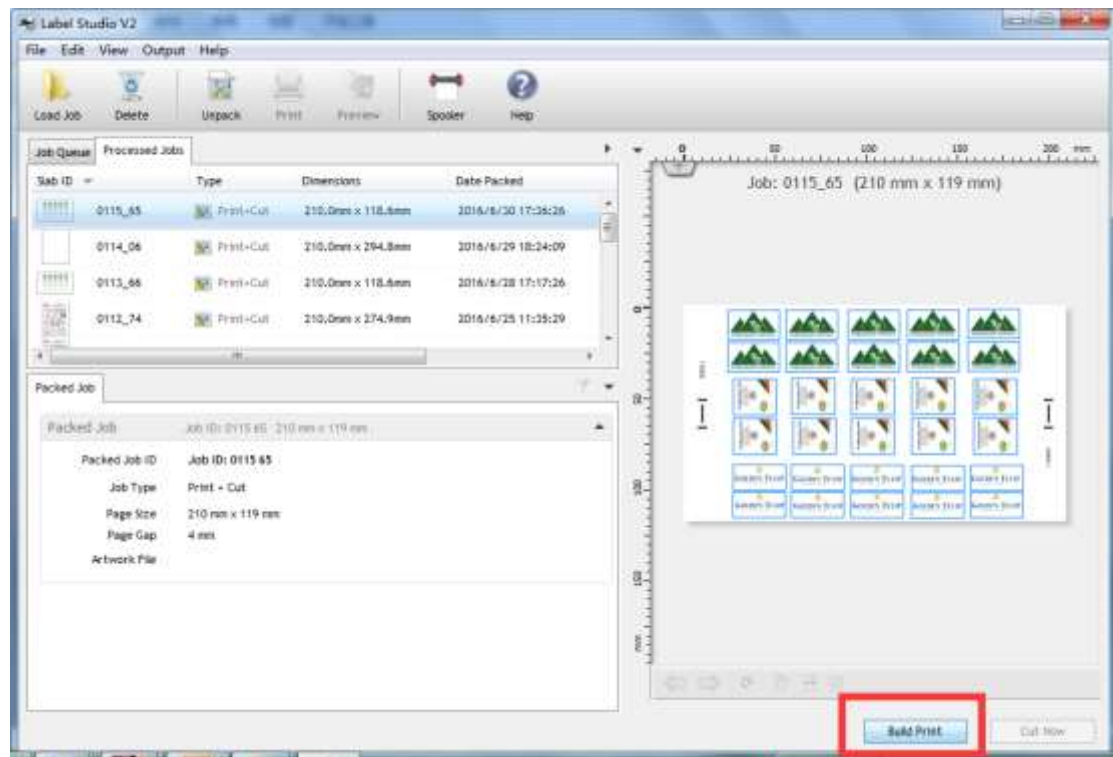
Step4: add lable number you want

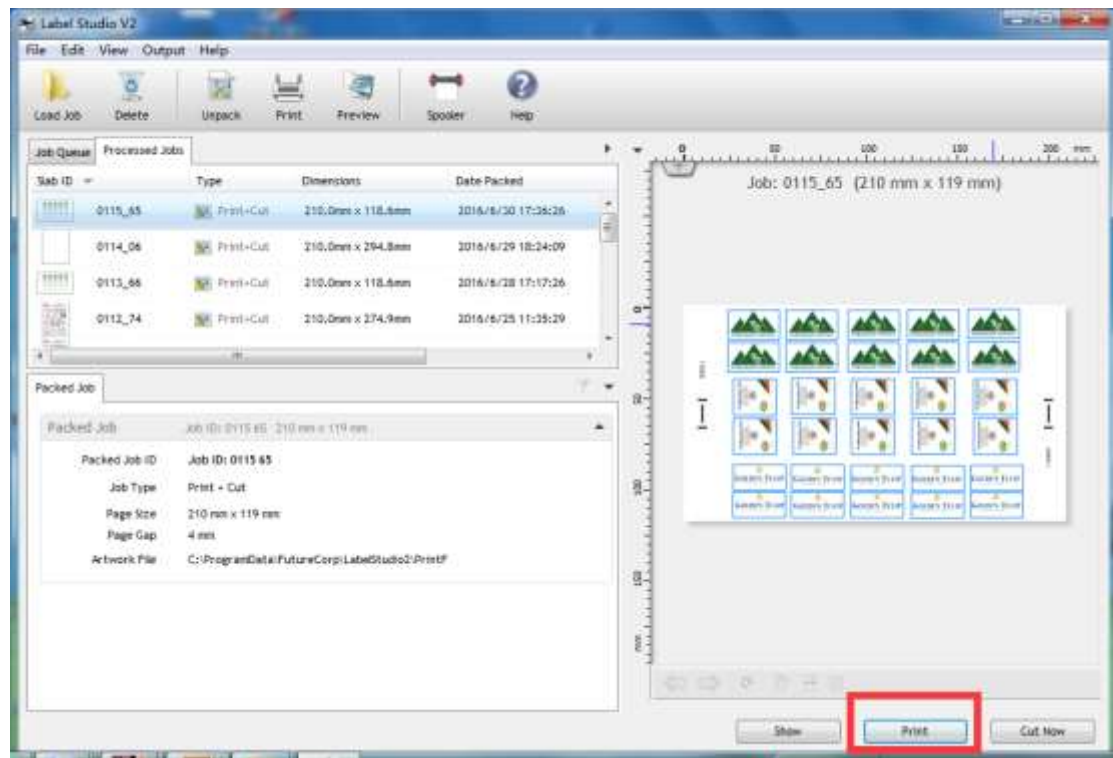


Step5: apply



Step6: build print





Step7:print the file use roll paper and make sure there is no gap between each. (such as follow)





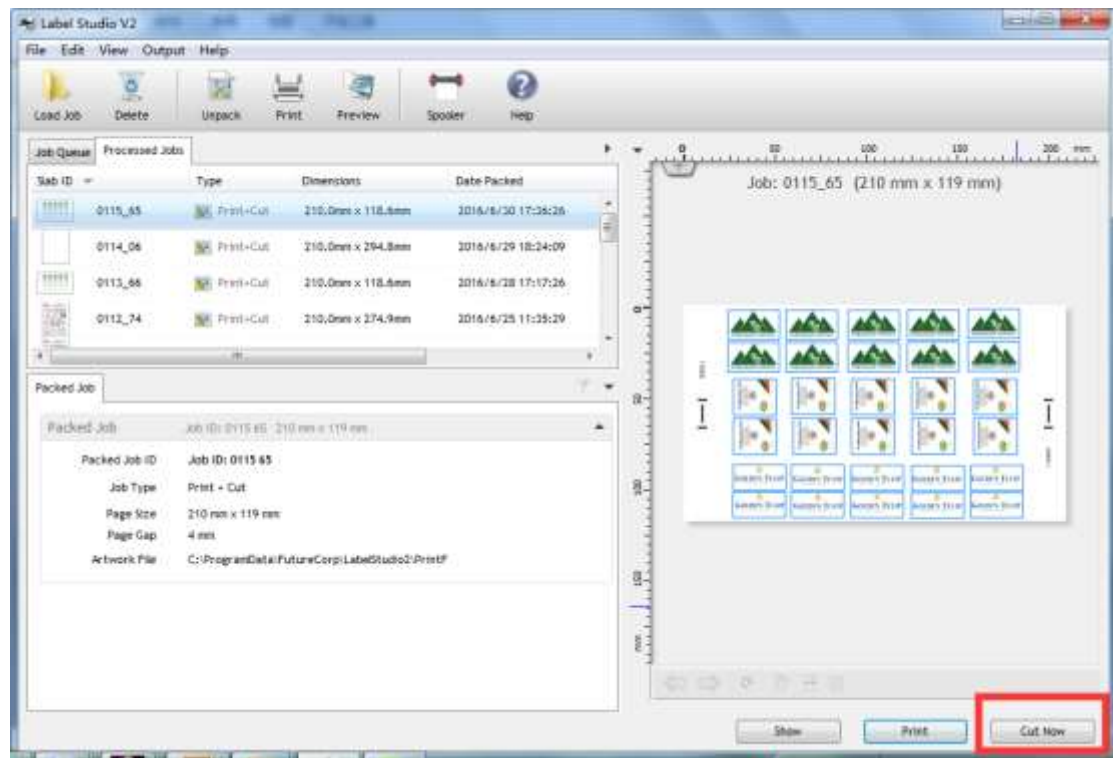
Step8: install paper on label cutter



Step 9: move the laser on mark, then enter



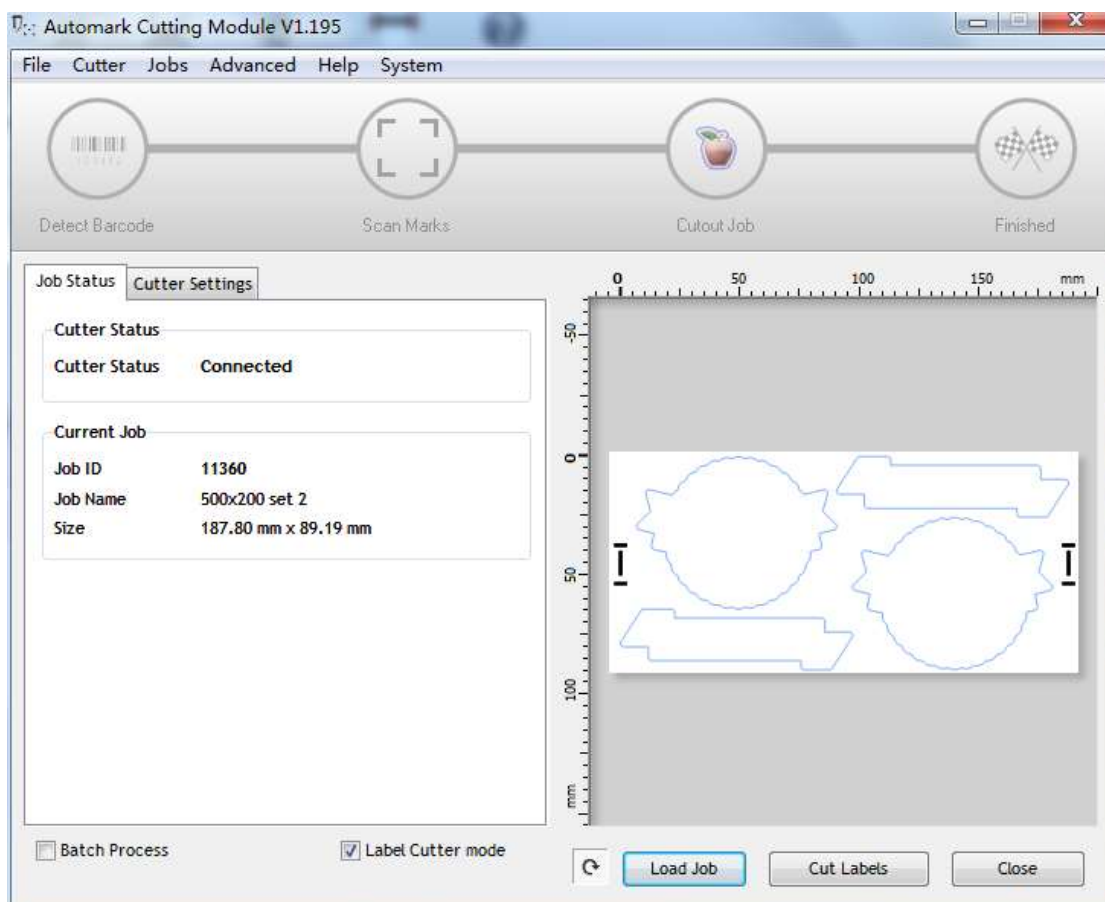
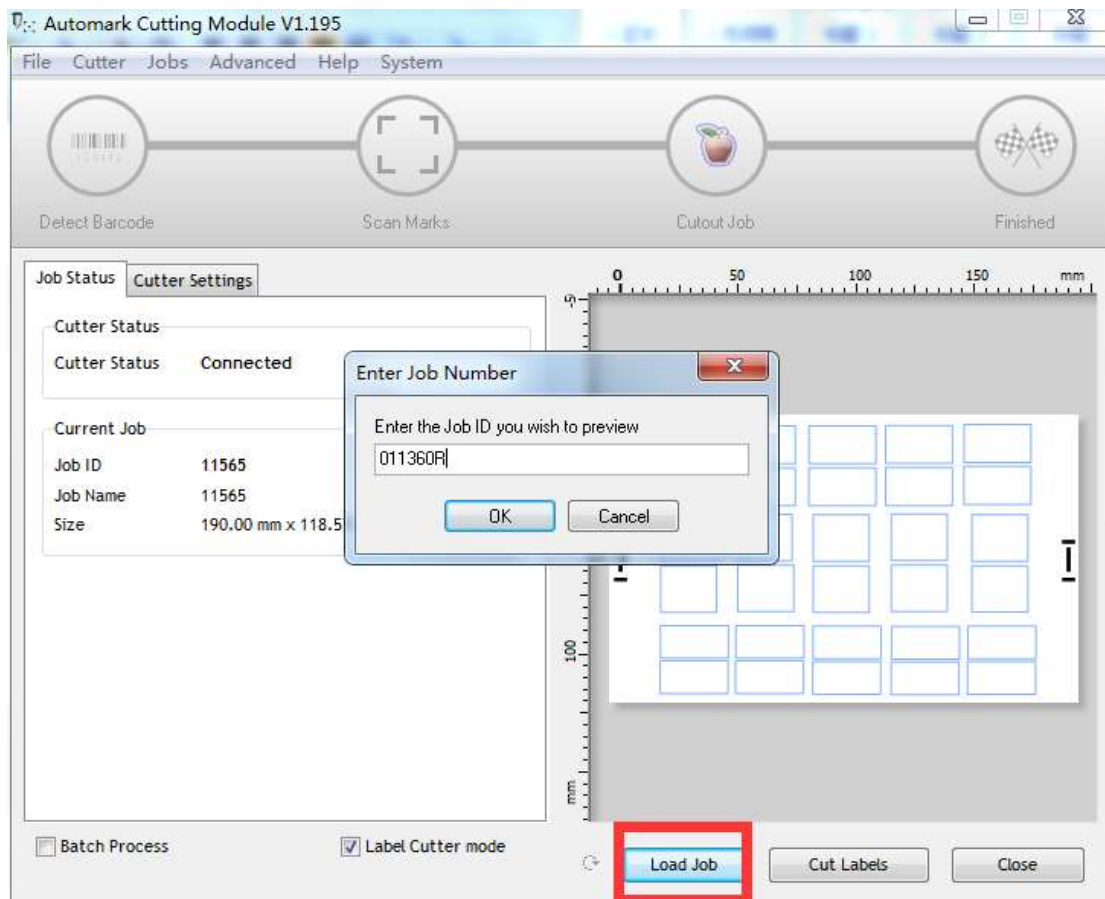
Step 10: cut now



Step 11: load the label number, (near the mark)









## Step12: cut labels

