
Multi-function Silicon Edge Sewing Machine

Model: MT-KC01-2PL

User Manual



Contents

Chapter 1. Introduction

Chapter 2. Safety Measures

Chapter 3. Technical Specifications

Chapter 4. Functions

Chapter 5. Advantages

Chapter 6. Installation and Operation

Chapter 7. Warranty

Chapter 1. Introduction

MTEK Multi-function Silicon Edge Sewing Machine is a special machine for finishing all banners and signs or sew digital textiles with silicon edge graphics, Velcro, and hem. It reduces production time and increase output.

Our machine is reasonable structure and user friendly. Operators achieve consistent and high-quality flat seams alignment without ruffling. Durable electrical and mechanical designs are safe and reliable. Let us bring your textile finishing to next level.

Chapter 2 Safety Measures

Before the operation, please read the safety instruction and understand the primary structure, function and operation method of the machine.

I. Before operation

1. Make sure power supply at your working place the same as the machine rating, and connect the machine to ground. Distinguish between single phase or three phases
2. Fill up the engine oil which come along with the machine packing to the oil tank.
3. Switch on the power and run about 30 minutes in low speed.
4. Drop some silicon oil into the plastic small case located in front of the machine that act as lubricator to threads.
5. Use hand reel to lower down the needle bar. Check the needle bar working on track and motor in right condition after power on.

II. During operation

- 1 Operators must put fingers away from needle bar when sewing in progress.
- 2 Power must switch off when tilt up machine head, or remove V-shape rubber belt.
- 3 Keep the working area clean. Make sure fingers, hair, and stuffs away from V-shape rubber belt, needle bar and motor.

Chapter 3 Technical Specifications

Standard Conveyor	1500mm x 800mm (Customizable)
Seam Stitches	Single or Double Chainstitch
Speed	up to 20m/min.
Voltage	110V / 220V
Machine Dimension	1490mm x 1020mm x 960mm (conveyor) 610mm x 550mm x 960mm (sewing head)
Packing Dimension	1600mm x 1200mm x 940mm (conveyor) 910mm x 870mm x 1160mm (sewing head)
N.W. / G.W.	200kgs / 300kgs

Chapter 4 Functions

Multi-function Silicon Edge Sewing Machine

MT-KC01-2PL

- ☒ Version with conveyor
- ☒ Working table, conveyor and silicon tape feeding rack all-in-one
- ☒ 50x50mm aluminum durable frame
- ☒ Suitable for large format and heavy textiles
- ☒ Adjustable sewing speed for various needs
- ☒ Adjustable silicon tape channel to fit for 10mm to 15mm
- ☒ Conveyor synced with sewing machine for accurate and precise flow
- ☒ Metal roller and plastic roller as options

Different feeding tools for various applications

Various Silicon Tape

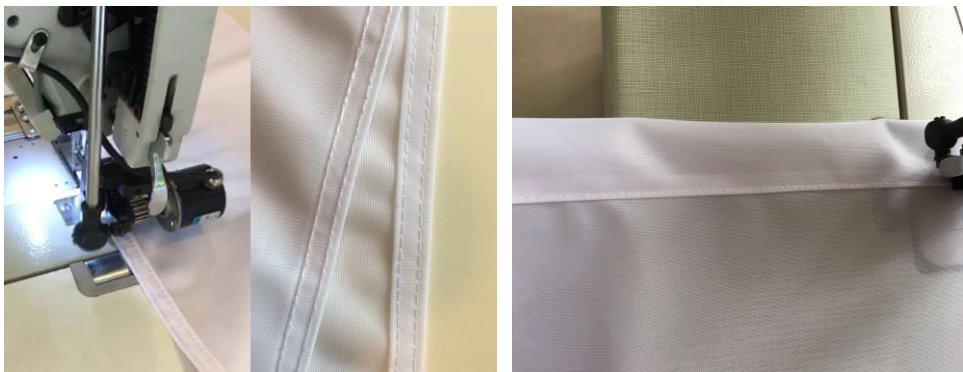
Silicon tape feeding channel is adjustable that fits most common silicon tape sizes in the market such as 3mm*(10mm-15mm)

Velcro

There is silicon edge sewing machine in the market that only has unique function which limits sign finishing applications. Our machine is also suitable for sewing Velcro without changing roller or needle bar. It broadens the application to Velcro POP UP display

Hem & Pockets

Banners and flags are widely used in sign industry. Hem and pockets making are required in many applications. 1mm curling tool is for flag hem and 5mm curling tool is for pocket making. The special design of our machine makes seaming smoothness without wrinkles.



Single & Double needles

Needle is detachable to fit for different strengthens and appearance requirement.

Chapter 5 Advantages

1. Simple Operation

- ☒ Plug and play, labor cost saving.
- ☒ No special training is required for the operators.

2. Automatic Feeding

- ☒ Fixed channel for silicon tape to make sure straight alignment.
- ☒ Feed silicon tape and fabrics at the same time.



3. Automatic Output

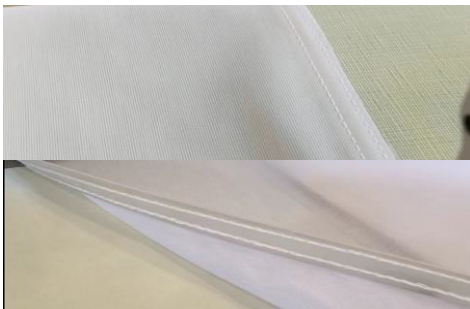
- ☒ Finishing comes out automatically, no manual assist is required.

4. Steps on the Same Line

- ☒ Feeding, knitting and output are proceed on the same line that makes finishing straight and flat.

5. Double Stitches

- ☒ Strong, durable and nice appearance.
- ☒ No overlock required.



6. No Conventional Bobbin

- ☒ Thread roll only, no conventional bobbin required.
- ☒ Efficient workflow by continue knitting without replacing bobbin time by time.

7. Special Motor

- ☒ Servo motor provides max. up to 4000rpm, rather than stepper motor limited to 1500rpm.
- ☒ Speedy knitting with stable performance.



8. Special Structure

- ☒ Silicon oil acts as lubricant that prevent thread from broken.
- ☒ Small plastic box placed in front of machine head where access and refill oil easily.
- ☒ Special mechanical structure minimizes thread and needle broken during long lasting operation.



-
9. LED provides even and clean light source.



10. Multi-function suitable for various applications for silicon tape, Velcro, hem and pockets.

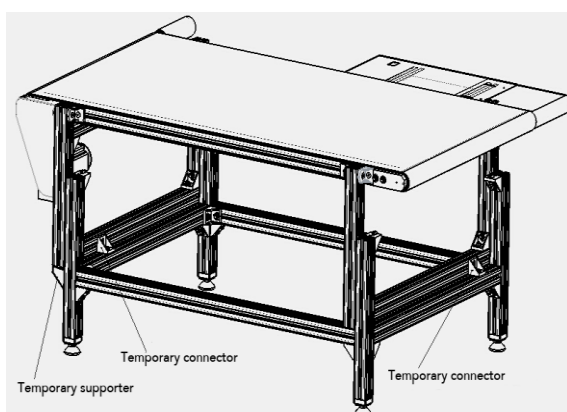
11. Press Roller makes silicon tape without curing.



Chapter 6. Installation and Operations

Model: MT-KC01-2PL (conveyor)

- 1 Open wooden packing box.
- 2 Take out Frame B from the packing and follow the installation steps instructed.

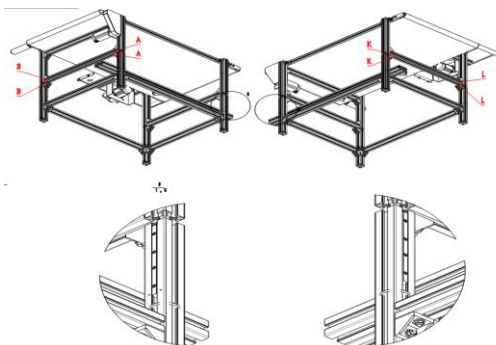


Picture 1

Step 1: Remove the locks of temporary connectors from upper and lower frames as shown in Picture 1.

Step 2: Lift up upper frame, then match the letters AA, BB, KK & LL.

Step 3: Put down the upper frame slowly on top of upper frame a Picture 2.

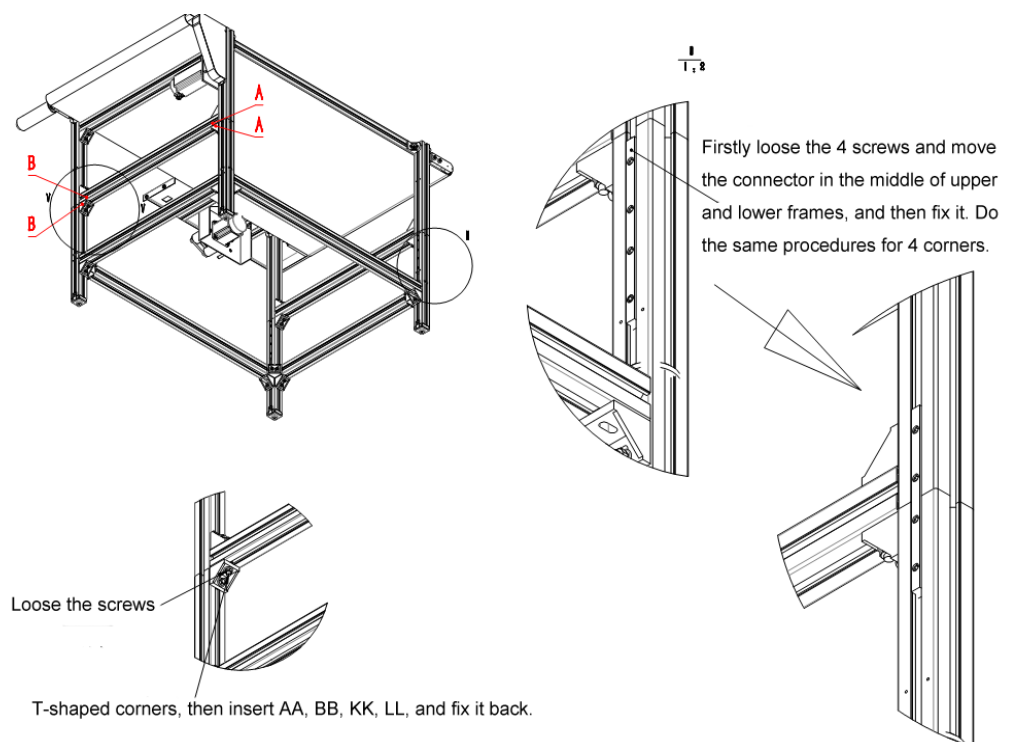


Picture 2

Step 4: Shown as Picture 3, firstly loose the 4 screws and move the connector in the middle of upper and lower frames, and then fix it. Do the same procedures for 4 corners.

Step 5: Loose the screws on T-shaped corners, then insert AA, BB, KK, LL, and fix it back.

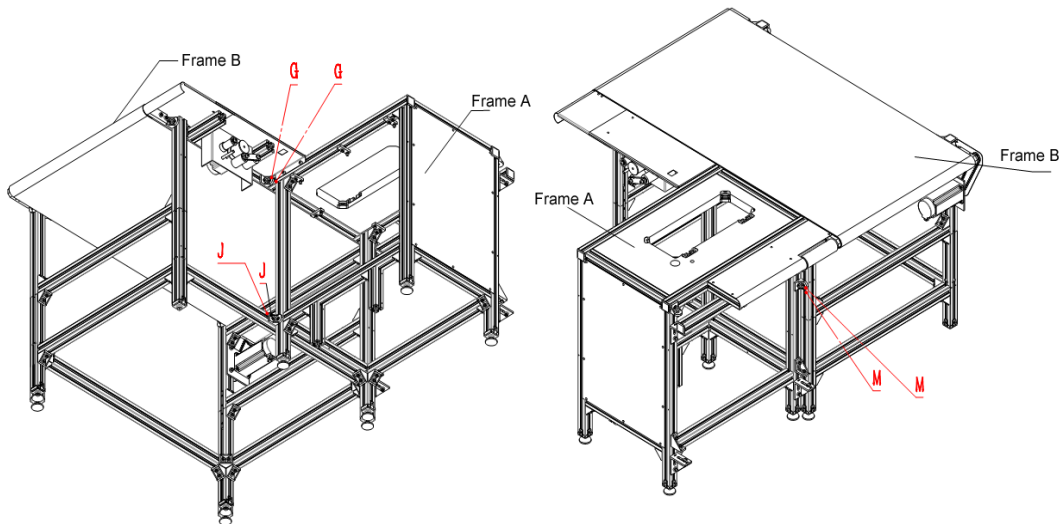
Step 6: Remove temporary supporter after finishing installation of Frame B (total 2pcs, shown in Picture 1).



Picture 3

Step 7: Shown as Picture 4, put Frame A & Frame B together.

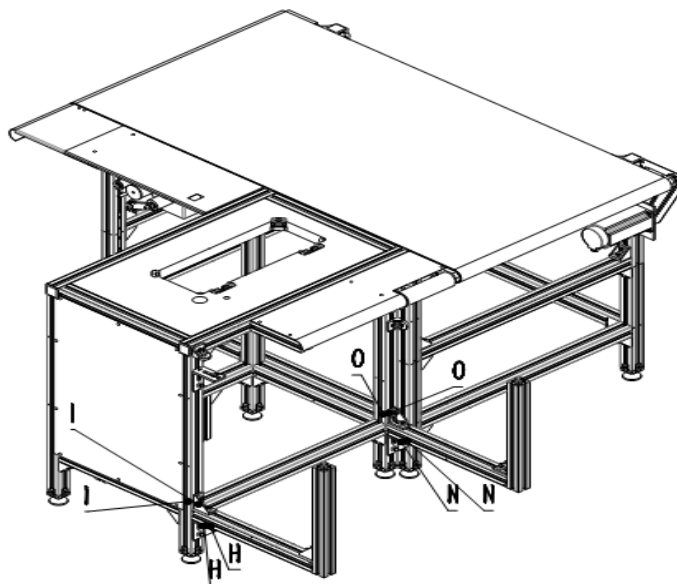
Step 8: Connect 3 markings GG, JJ and MM by T-shaped corners which have been equipped on the frame.



Picture 4

Step 9: Install the two legs of materials collector shown as Picture 5.

Step 10: Loose the screws, insert the legs to match markings OO, NN, II, HH, and then fix it again.

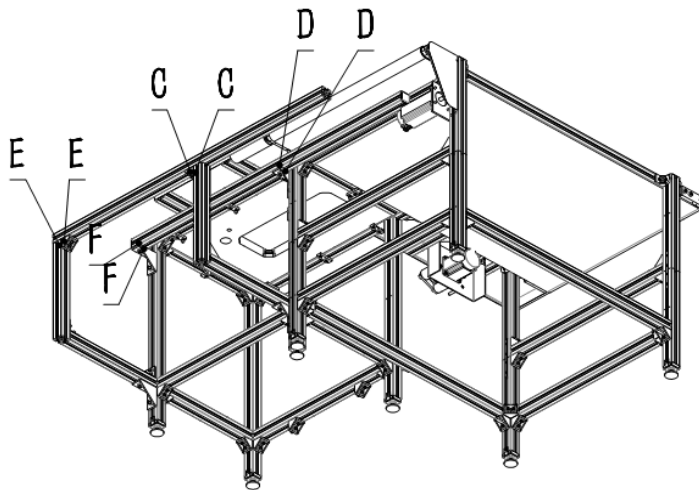


Picture 5

Step 11: Shown as Picture 6, install the horizontal bar of materials collector.

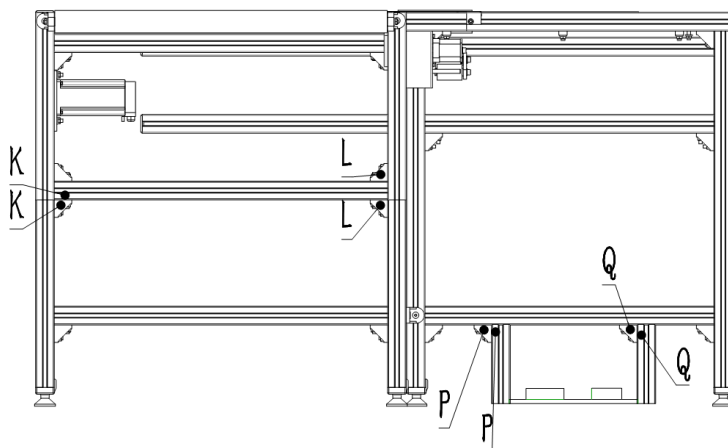
Step 12: Insert the inner bar without T-shaped corner by matching FF, DD, and fix it.

Step 13: Insert the outer bar with T-shaped corner by matching CC, EE, and fix it.



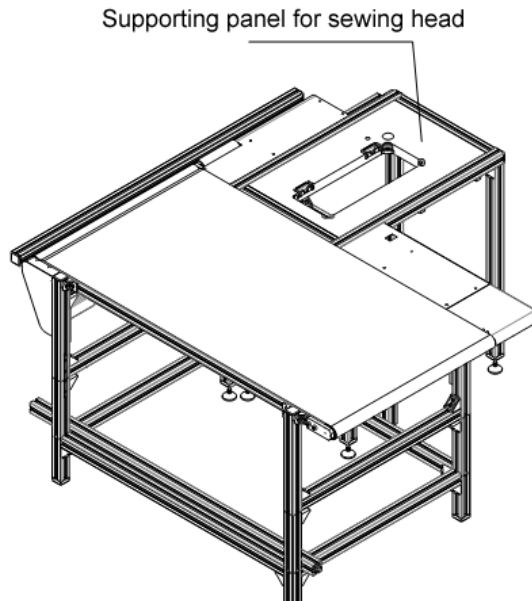
Picture 6

Step 14: Shown as Picture 7, put the pedal system under Frame A and match marking QQ and PP. Fix the T-shaped corner to the pole.



Picture 7

Step 15: Shown as Picture 8, put the sewing head on designed location of Frame A.



Picture 8

Step 16: After frame installation procedures, connect the power supply to sewing head and motor respectively.

- 3 Check the power line from control box to sewing head plugged firmly.
- 4 Take out spare part kit, oil tank and mount shock absorber to oil tank.
- 5 Take out thread rack, assemble and fix on the working table.
- 6 Fill up engine oil until reach same level of oil tank base.
- 7 Switch on the machine and run about 30 minutes in low speed.
- 8 Examine the machine running if in right condition. Check the oil indicator in safety level. Observe needles, conveyor and silicon feeding roller in synchronous.
- 9 Wiring threads, feed fabrics and silicon tape, and start to work.

Chapter 7. Warranty

Model:		Serial No.:	
Buyer:		Purchase Date:	
Seller:		Contact Info.:	

Disclaimer

- 1 This form is filled by seller, and is kept by buyer. Amendment is not acceptable.
- 2 The warranty will be offered within one year for the whole unit, and 3 years for mechanical parts of sewing head, starting from the date of purchase. When filing each claim, buyer must provide details of problem and serial number with clear pictures or video.
- 3 If the machine has been subjected to improper use, modification and accidental damage, the terms of this warranty will not be applied.