

# Operation manual

**DGW4050**



**Version 1.0**

- in order to ensure safe and proper use of the printer please read this manual carefully before use
- after reading the manual, the safekeeping, reference when necessary
- don't let the child contact spray machine
- Please use the treatment solution recommended by the manufacturer
- The following instructions are important for safe operation and must be followed strictly

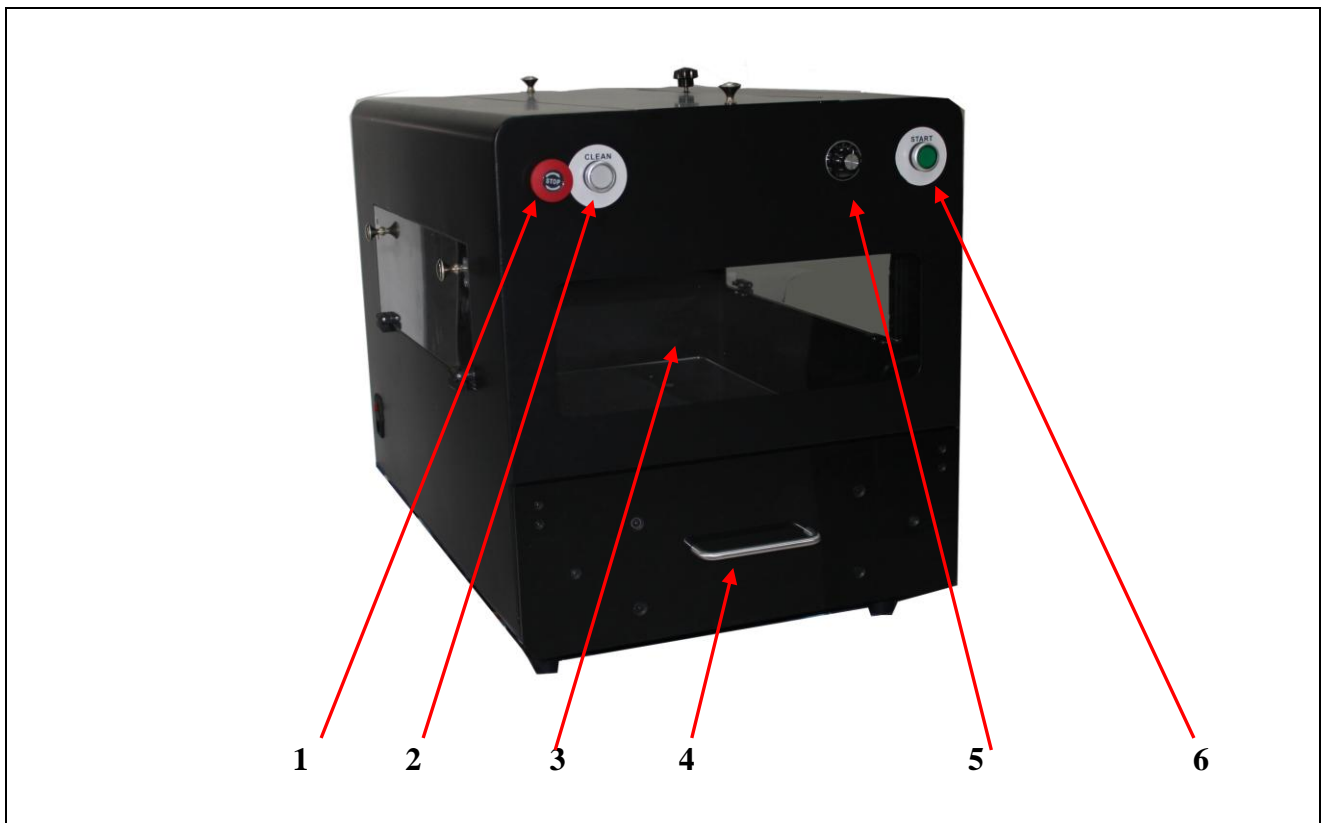
# Chapter 1 overview of spray machine

## 1.1 Product technical parameters

The nozzle	An american-made nozzle
Maximum spray area	400MM X 500MM
Adjustable range	0-500MM
Spray amount	12ML-80ML
power source	AC110or220V, 50HZ/60HZ 150W
The machine size/weight	The machine size/ weight: 780mm(L) X 520mm(W) X 580mm(H) 60KG Packing size: 840mm(L) X 570 mm(W) X 680mm(H) weight70KG

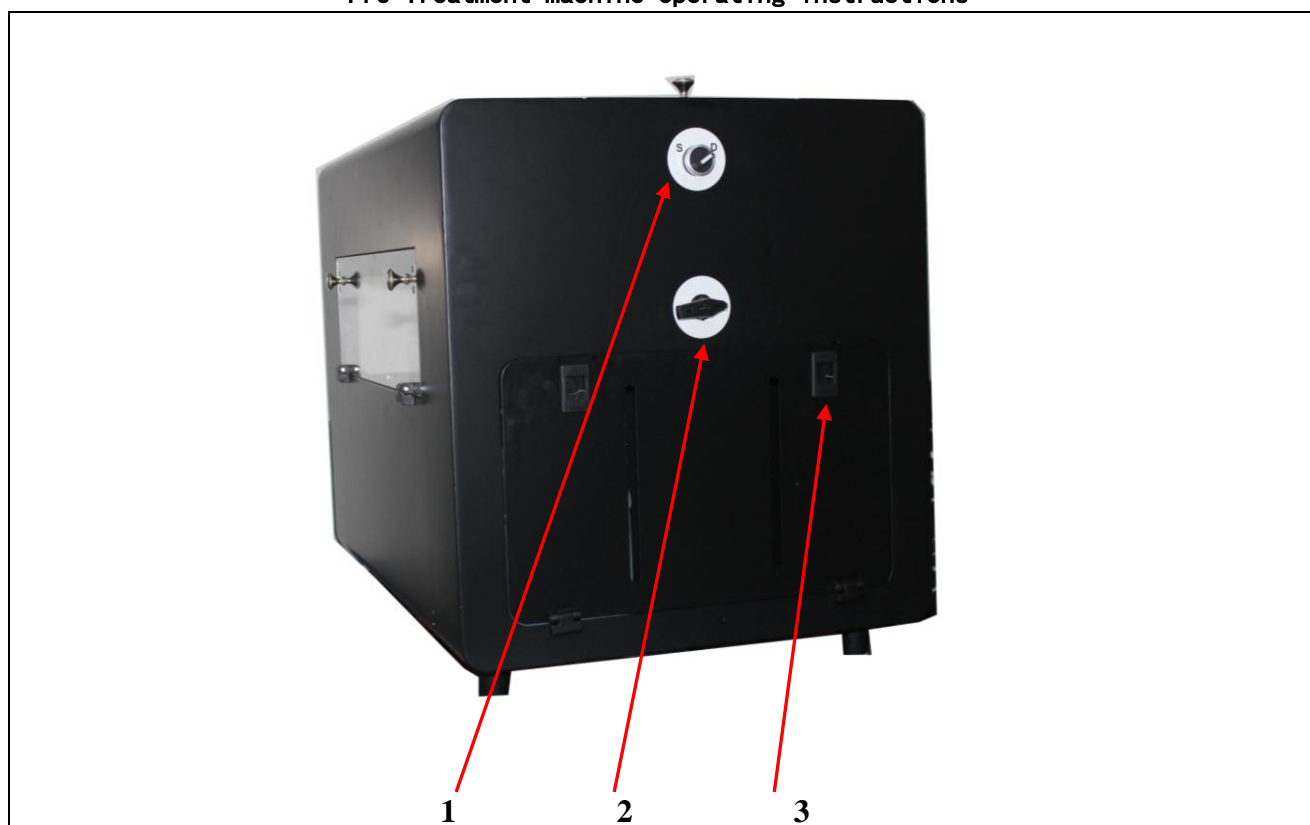
*The technical parameters of the above products are subject to change without prior notice.*

## 1.2 Part name and function



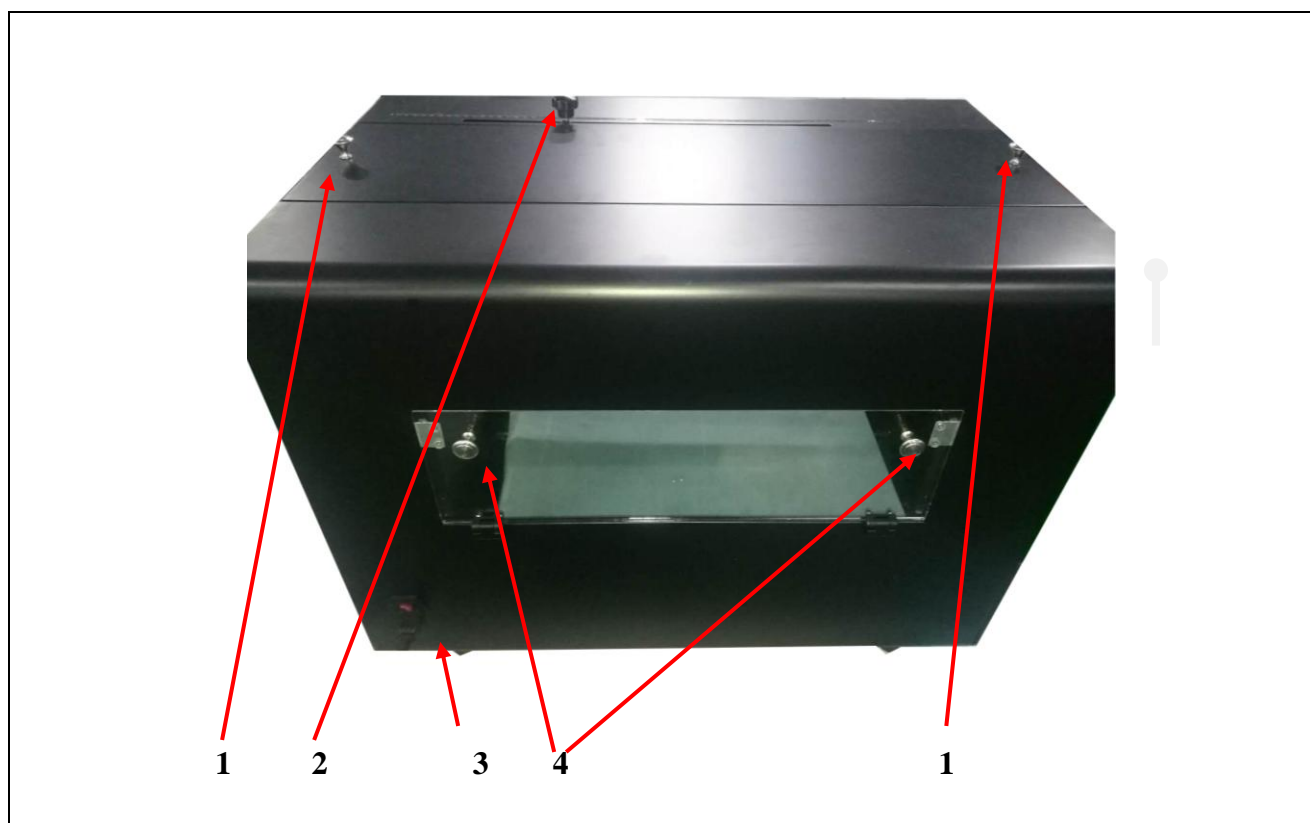
Serial number	name	function
1	The EMC switch	Can be opened and related to the spray machine working system
2	Cleaning button	To clean the nozzle
3	Observation window	The window door is fixed and is only used to observe the spray effect
4	The door handle	Open the hopper door
5	Speed control knob	Used to adjust the amount of spray
6	Start button	Press the button to start the machine

## Pre-Treatment machine operating instructions



Serial number	Name	function
1	Single/double switch	Used to choose the working mode of the spray machine, single or double spray
2	Liquid switch	To switch the liquid line, choose the treatment solution or cleaning solution (pure water)
3	Disposal liquid storage door	After the door is used for placing treatment and cleaning liquid bottles

## Pre-Treatment machine operating instructions



Serial number	Name	function
1	Door handle of electrical maintenance barn	Open the door to repair and maintain the electrical and liquid lines of the sprinkler
2	Spray length adjustable handle	Used to adjust spray length
3	Power Socket	Ac 220V input port and total power switch
4	Observation window	Open the window door to see the spray effect and maintain the nozzle

## Chapter two installation guide



**CAUTION** Be sure to read the safety instructions section of this manual carefully before installation

---

### 2.1 Open the package and take out the spray machine

#### 2.1.1 Remove machine packing cases



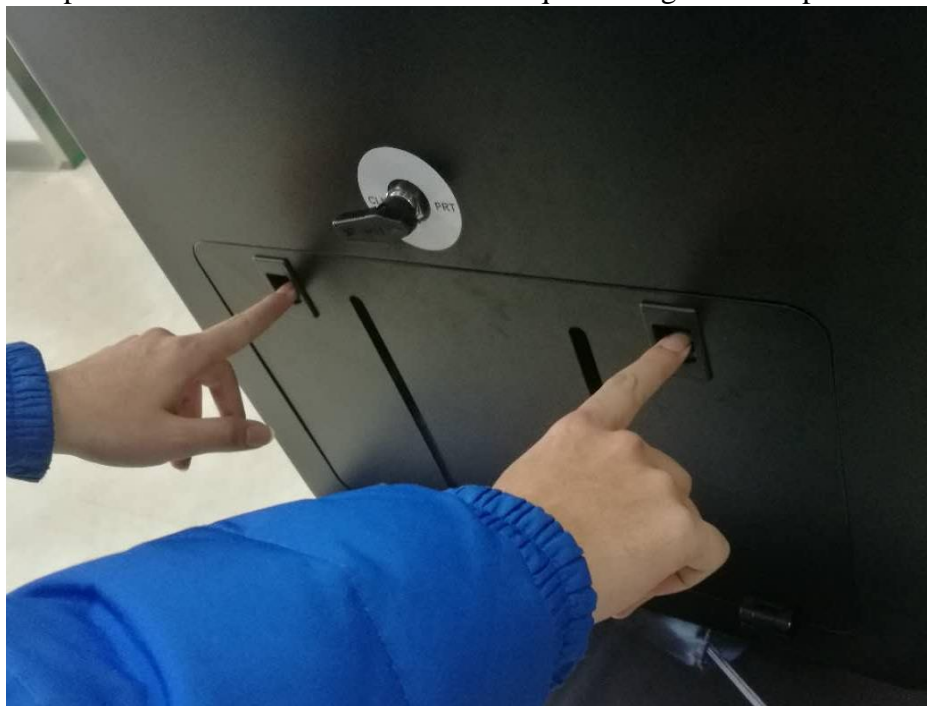
#### 2.1.2 Take out the enclosures and take out the spray machine



## 2.2 Basic usage of spray machine

2.2.1 After taking out the spray machine, open the door of the spray machine treatment liquid storage box

The power cord of the machine and the liquid storage box are packed in the box

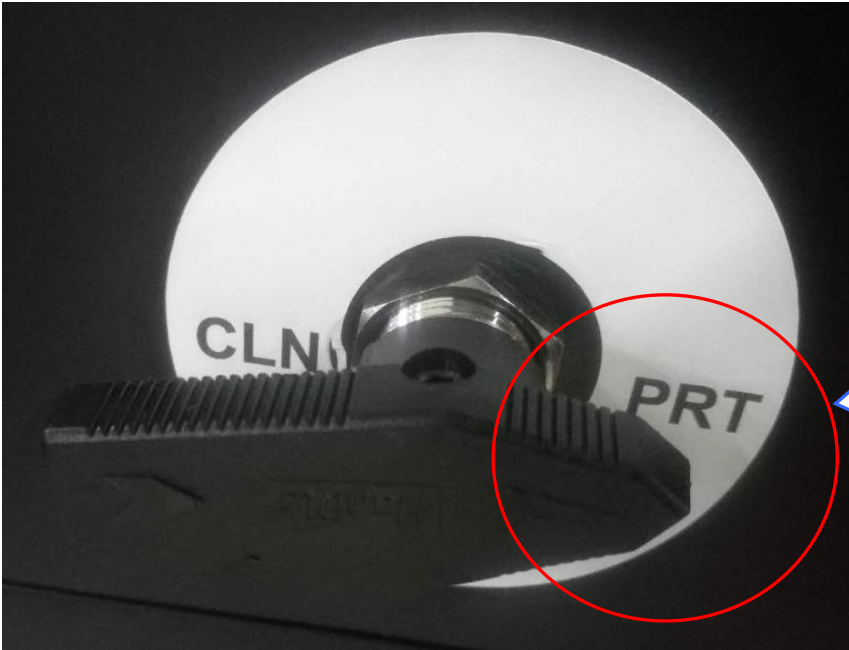


Clear water (pure water) in bottle 1

Bottle 2 contains the treatment solution

## Pre-Treatment machine operating instructions

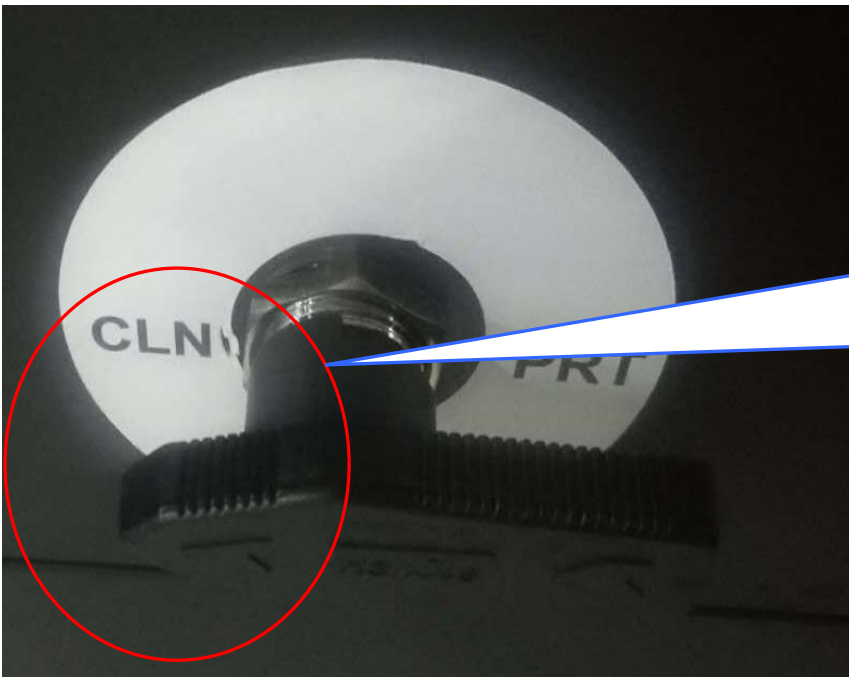
### 2.2.2 Switching between cleaning solution and treatment solution



PRT stands for the treatment solution

The arrow of the three-way hand valve pointing in the direction of PRT indicates that the spray is the treatment fluid

This is the working state



CLN stands for pure water

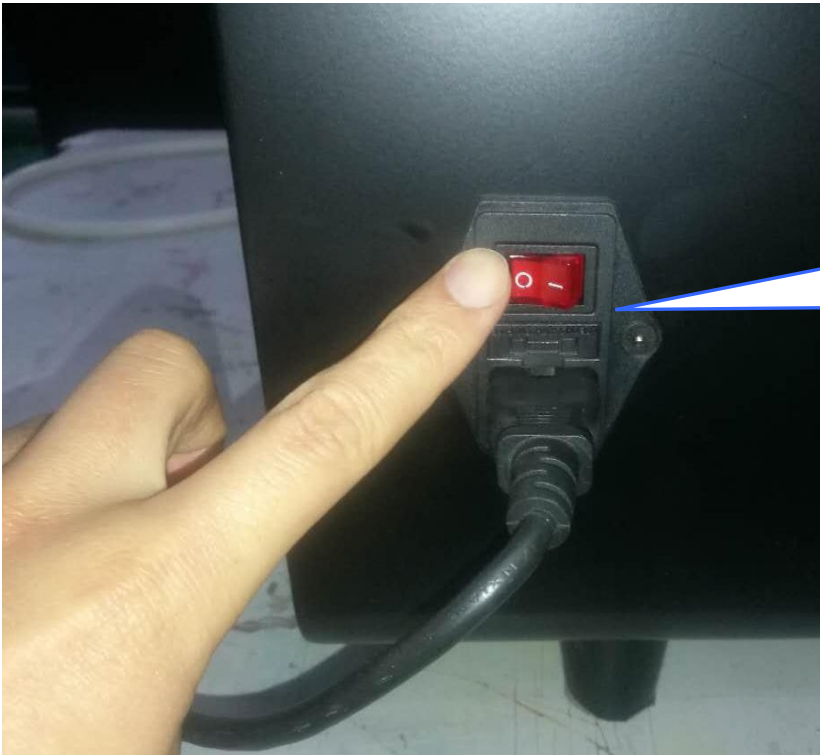
The arrow of the three-way hand valve points in the direction of CLN

This is when the nozzle is



## Pre-Treatment machine operating instructions

### 2.2.3 Turn on the power and prepare for spraying)



Insert the power cord and turn on the power switch



Turn the emergency stop switch clockwise, the sprinkler system is started, and the start indicator light is on

### Pre-Treatment machine operating instructions

Before the machine is used, it needs to clean the remaining pure water in the pipe. At this time, a disposable cup can be placed under the nozzle, and then the cleaning button can be pressed, as shown in the picture below:



Description: when the cleaning button is pressed, the liquid pump will start to work. The liquid pump will take out the treatment liquid in the liquid bucket, and then spray out evenly through the fan nozzle

At this time, according to the user's experience, when the injection solution is relatively pure, it can stop and wait for the subsequent normal production work

#### 2.2.4 Apply the fabricl for spray

Open the top bin door

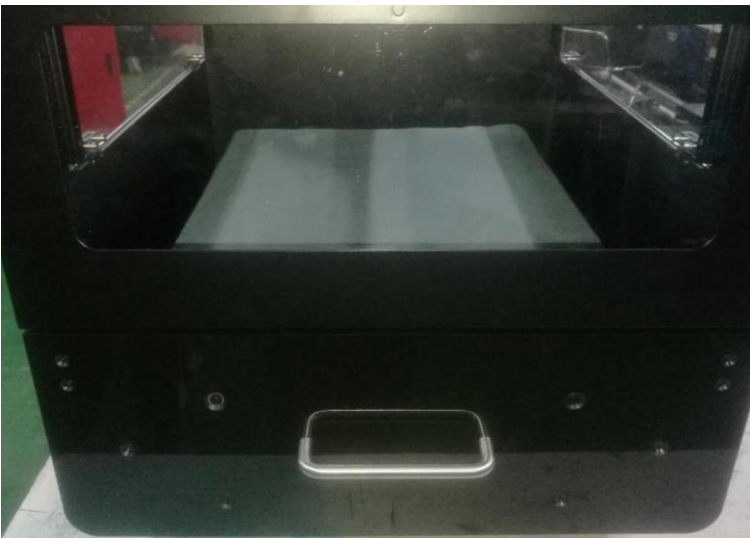
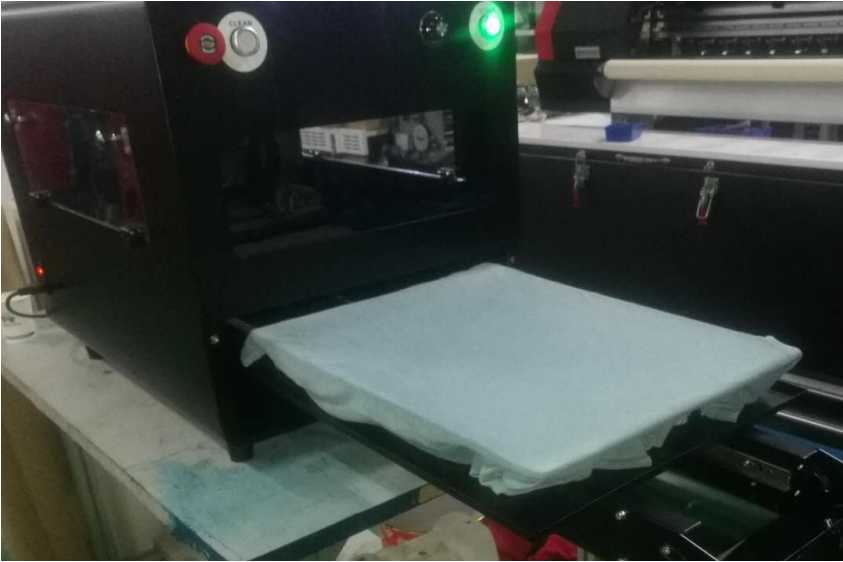


## Pre-Treatment machine operating instructions

Set into the T-shirt



## Pre-Treatment machine operating instructions

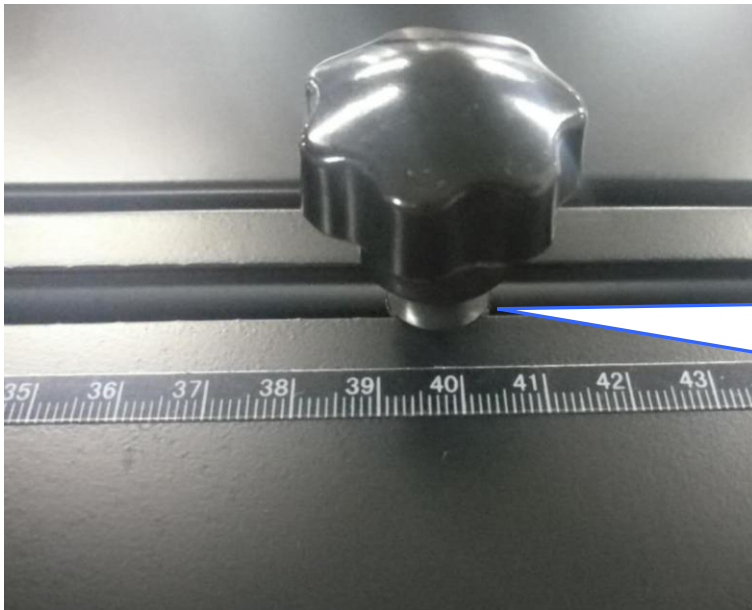


Set the length of sprinkler position in the T-shirt, manually adjust it





## Pre-Treatment machine operating instructions



The position of the hand screw on the ruler is the length of the spray on the T-shirt

Description: the spray machine adopts fan nozzle, and the spray width is the same, keeping 400MM wide all the time. The length and direction can be adjusted from 0 to 500 depending on the print position of the picture on the T-shirt. The adjustment method is shown in the figure above

### 2.2.5 Choose spray mode

The machine has two spray modes

One is in single jet mode, with the switch pointing to S position)



When users want a smaller amount of spray, they can choose the single spray mode. In the single spray mode, press the start button and the sprinkler cart will stop spraying after it moves from the origin to the setting length position.

When the start button is pressed for the second time, the spraying trolley will start to spray from the position of setting length and stop spraying when it returns to the original position

The second is a dual spray mode, with the switch pointing to position D

## Pre-Treatment machine operating instructions



When the user selects dual-jet mode, press the start button, and the spray car will start to spray from the origin and move to the position of set length, and then automatically return to the origin. The nozzle is always in the spray state during the whole process

It can be seen from the above description that the amount of treatment fluid in single injection mode is the half of double injection mode

**Reminder:** at present, according to the actual operation experience, it is generally recommended to use the dual spray mode, so that the spray will be more even and the effect will be better

## Pre-Treatment machine operating instructions

### 2.2.6 Selection of spray volume

According to the different fabric and color of T shirt, different spraying amount needs to be selected, and different spraying amount can be achieved by adjusting the knob



The knob actually controls the speed of the sprinkler car

When the nozzle buggy is running fast, the amount of spray on the T-shirt in the same area is less

When the nozzle buggy runs slowly, the amount of spray on the T-shirt in the same area is large

The knob is adjusted clockwise, the amount of spray will be reduced, the amount of anti-clockwise spray will be increased, and the user will adjust the appropriate amount of spray according to the actual use)

### 2.2.7 Spray work

When everything is ready, press the start button to realize automatic spraying



Start button

## Pre-Treatment machine operating instructions

### 2.2.8 Clean the nozzle after spray operation

Rotate the manual valve to the CLN position while ensuring that there is sufficient clean water in the cleaning bottle.



Press the cleaning button to clean the nozzle. In order to make the spray cleaner relatively clean, it is recommended to use disposable cups to collect and process cleaning fluid.





## **Attention:**

As the treatment solution is a kind of slightly viscous liquid (especially the treatment solution with dark color T shirt), it will increase the viscosity when exposed to the air for more than an hour, which makes it easy to block the nozzle. Therefore, it is recommended to clean the nozzle as soon as possible after using the spray machine, generally not within 12 hours

## **Chapter iii maintenance and maintenance**

### **Daily maintenance**

In order to ensure the normal operation of sprinkler, daily maintenance is very important, as detailed below:

- 1: Since there is air in the liquid pump, the pumping force will be relatively small, so when the treatment liquid is used up and the treatment liquid is not added in time, a large amount of air will enter the pipeline. At this point, long press the cleaning button, so that the liquid pump will continue to work until the liquid erupts evenly from the nozzle)
- 2: The nozzle should be cleaned timely. If the nozzle is blocked and cannot be sprayed or sprayed unevenly, the nozzle can be removed and the nozzle can be soaked in a cup for 24 hours. Then the nozzle can be cleaned gently with a soft toothbrush
- 3: Since the treatment solution is acidic and prone to rust, it is necessary to regularly apply butter or lubricating oil to moving metal parts such as linear guide rails