



ZIGZAG INSTALLATION INSTRUCTION

Warning //

1. Strictly forbidden to remove or modify LED and the surface of LED is forbidden to touch with any sharp objects.
2. Strictly prohibited to charge during installation.
3. No organic chemical solvents are used.
4. In the installation process, please insulate the end of the unconnected main line and the connection points of each circuit, waterproof and anti-corrosion treatment.
5. If the power supply cord of the strip need to lengthen, it is better to use the wire of thicker core, so as to avoid the adverse consequences caused by too much heat of the wire.
6. Before the power supply, please confirm that the power supply voltage meets the requirements and the line installation is correct.
7. This product is applied to the light box or internal use strictly. Do not to be exposed to outdoor or semi-outdoor use.
8. Installation, maintenance must be elections, strictly prohibited to non-professionals.
9. Not exceeding the standard serial connections.

Installation //



1.Preparation

√According to the Tools prepare the tool. √Make sure the product is correct with what is required. Check label on the product package. Such as IP grade, CCT, Working voltage, Width of the PVB board and quantity and etc.



2. Clean the surface where is the install location.

Make sure it is dry, neat and no dirt.

⚠ If the surface is not dry, it will reduce the adhesion of strip light.

⚠ If there is any stain, this will influence the adhesion of strip light, as the strip light is actually paste onto the stain. Therefore, the strip light will fall off partly or completely.

3. Take off the release paper of the strip light.

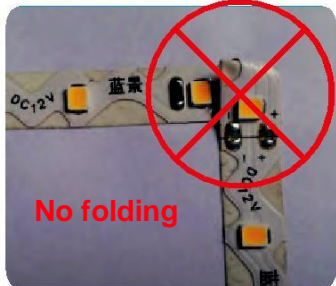
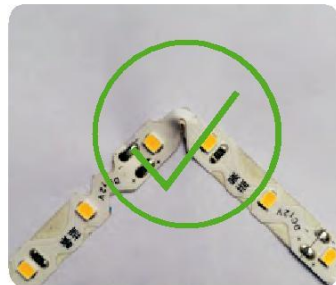
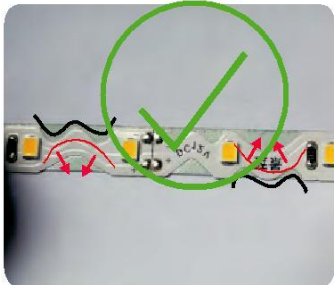
Close to the install surface and press tight.

⚠ The s-type soft gum is pressure-sensitive adhesive, which can promote the adhesion of pressure-sensitive adhesive.

⚠ When doing installation, slowly pull the strip light out. Do not pull the strip, which will damage the products. Avoid strip light or other hard objects to damage the products.

⚠ DO NOT PRESS ANY COMPONENT OF THE PRODUCT.

DO NOT PRESS LED AND ANY COMPONENT



4. When it is necessary to bend, do as show as below.

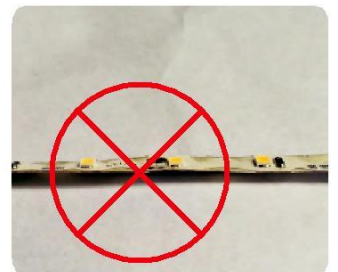
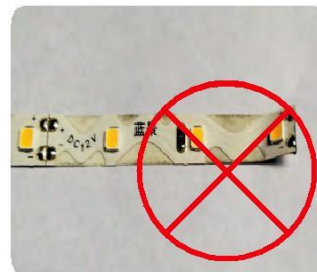
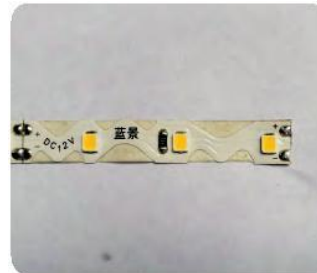
When fold at "s" part, it has to bend inward. If bend outward, the strip light PCV board will be teared into parts easily.

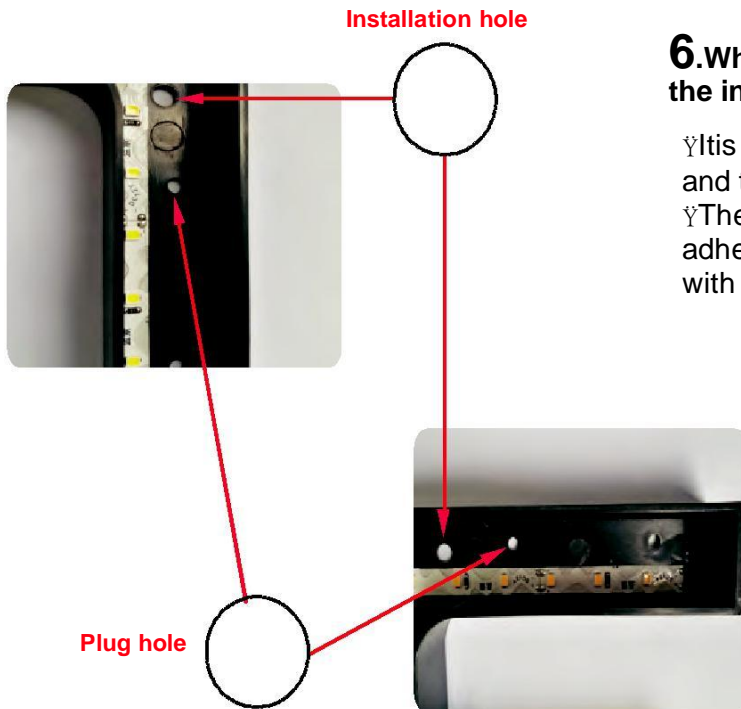
DO NOT FOLD AND USE THE STRIP LIGHT.

5. When installing, the product is pressed to the surface of the installation, and the warped edges are not allowed.

Warped edges will reduce the adhesion of adhesive.

For long-term use, the warped feet are becoming larger and larger, which may eventually lead to product shedding.





6. When installing the strip light, please avoid the installation hole.

It is better to leave 3-4 cm space between strip light and the plug-hole.

The back side soft gum is pressure-sensitive adhesive, which is not water resistance. So when it is with water the adhesive will be reduced even fall off.

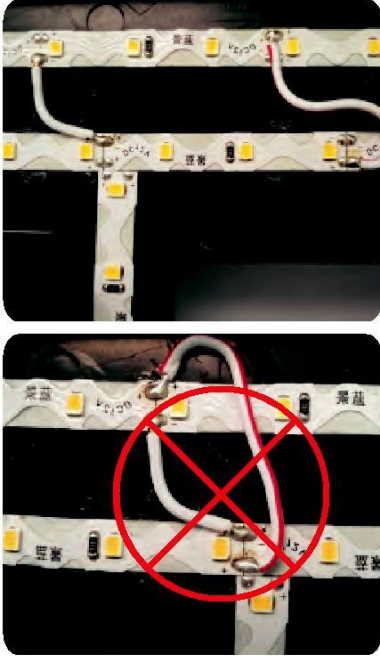
7. It is better to put hot melt adhesive to fix the strip light.

DO NOT COVER ANY COMPONENT ESPECIALLY LED



Do not cover resistance

Do not cover LED



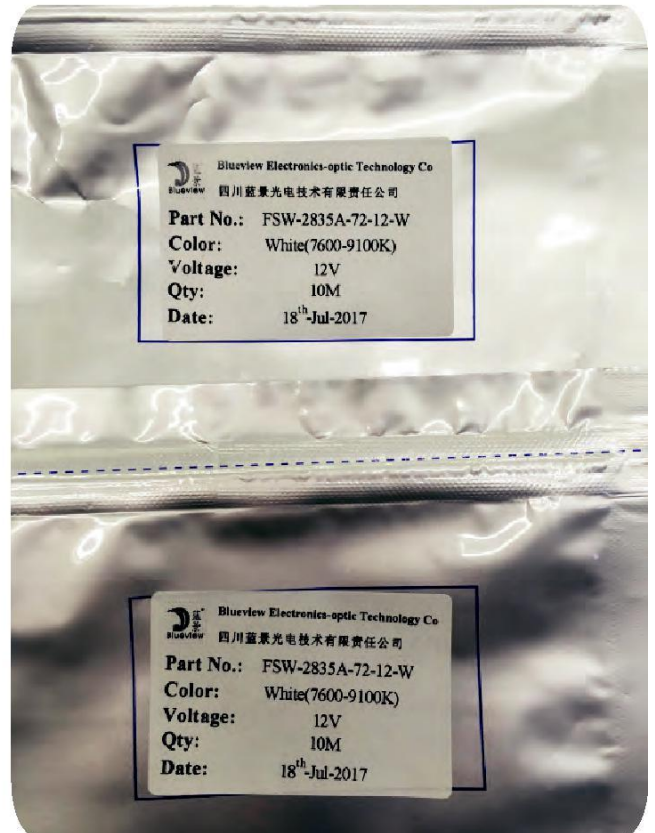
8. When soldering main line, must dislocation soldering.

ÿ Avoid the same negative electrode, soldering main cable.

ÿ The main line is generally thicker, and after soldering with Tin, it will become hard. There is a lot of stress, which can cause the welding board to tear apart.

9. Reconnection

ÿ If it is not long enough to fill in the letter with one product, it has to reconnect with the same product and check the label showed as left.





10 .Testing

- Do the voltage test on the end
- If the end voltage is below 10.8V(compare with 12V rated working voltage), it needs feeding.
- If the end voltage is below 21.6V(compare with 24V rated working voltage), it needs feeding.