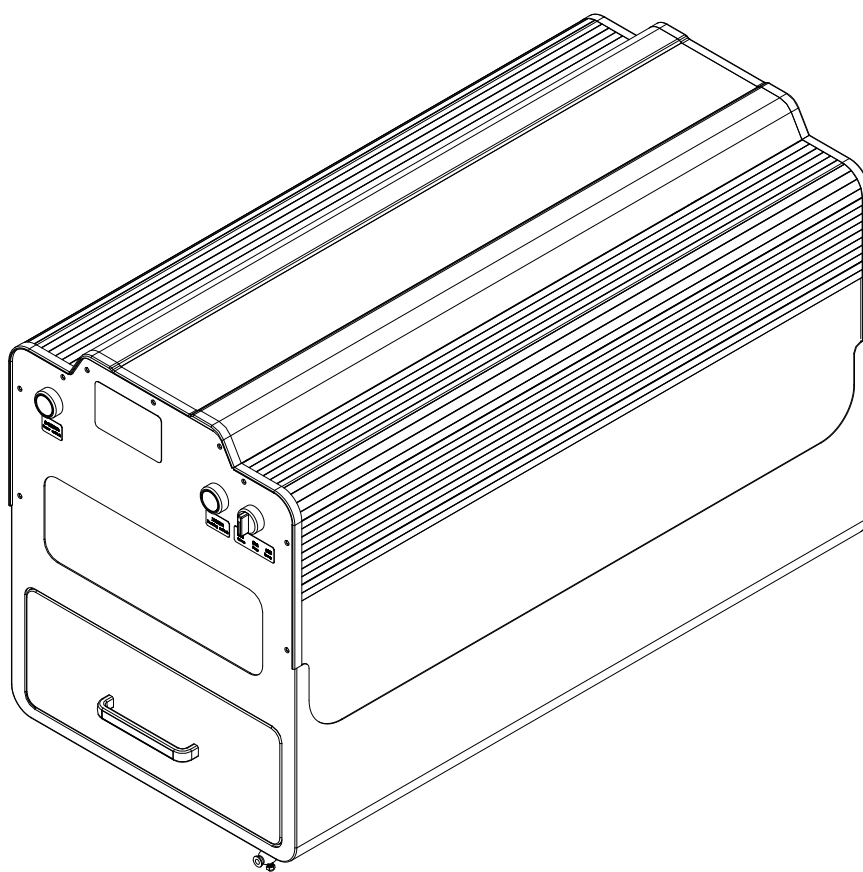


MANUAL USER

<ENGLISH VERSION>

PM01



Version 1.0

Ensure safe and correct operation

- To ensure safe and correct use, please read this manual before using.
- After reading, please take care of this manual, checking in any requirement.
- Please keep away from children.
- Please use the coating liquid which recommended by manufacturer.
- Please keep the power line dry, avoid electric shock.
- Please strictly obey the safe operation instruction.

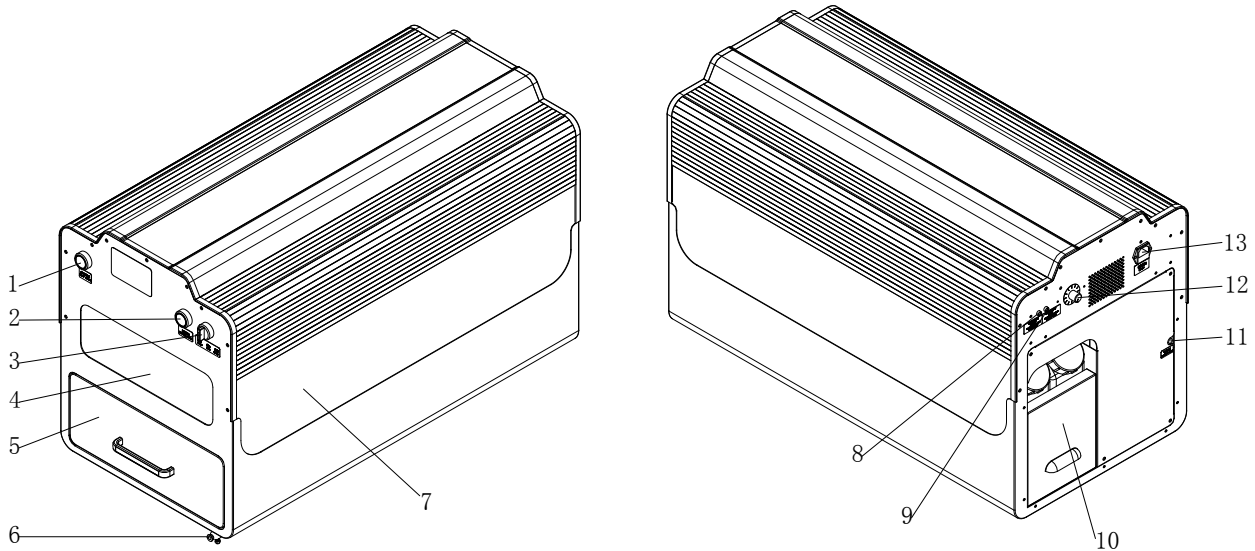
Chapter 1 DTG Pretreatment Machine Overview

1.1 Parameters

Nozzle Quantity	1pc
Spray Max. Range	320MM X 480MM
Spray Volume	30ML-80ML (adjustable)
Containers Capacity	3.5L
Voltage	AC100~260V, 50HZ/60HZ, 120W
Machine Size/Weight:	900mm(L) X 431mm(W) X 580mm(H)/ 45KG
Package Size/Weight:	1002mm(L) X 562 mm(W) X 746mm(H) /75KG

Package: Wooden case. Any contents and parameters are subjected to change without any notice.

1.2 Parts description and Functions



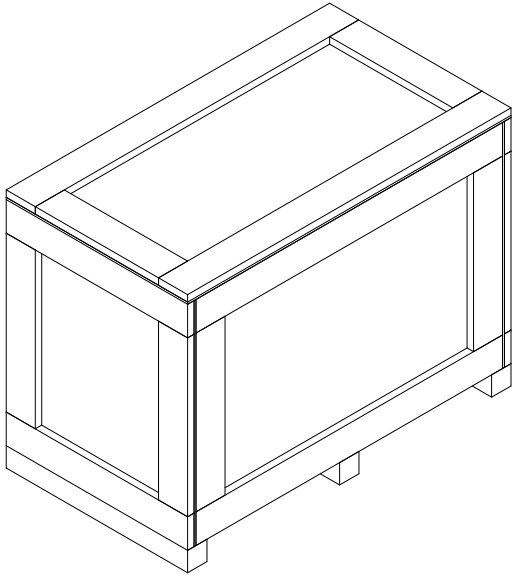
No.	Description	Function
1	Power Switch	Start
2	Working Switch	Press this switch to complete one time spray
3	Three-way Switch	Change the working mode of machine
4	Transparent Window(front)	Checking nozzle status(Clear/Stop/Spray)
5	Spray platen	Place the T shirt
6	Waste discharge outlet	Discharge the waste outlet
7	Transparent Window(side)	Checking nozzle status
8	Low level alarm(Coating liquid)	When the coating liquid is under certain position, the warning lights comes on.
9	Low level alarm(Cleaning liquid)	When the cleaning liquid is under certain position, the warning lights comes on.
10	Containers	Place the containers, closed when shipping, pulled out when working
11	Throttle	Control the liquid volume(Factory setting, you do not need to adjust)
12	Spray Speed Switch	Adjust the spray speed of nozzle
13	Wire socket	To plug in

Chapter 2 Install and Use Guide

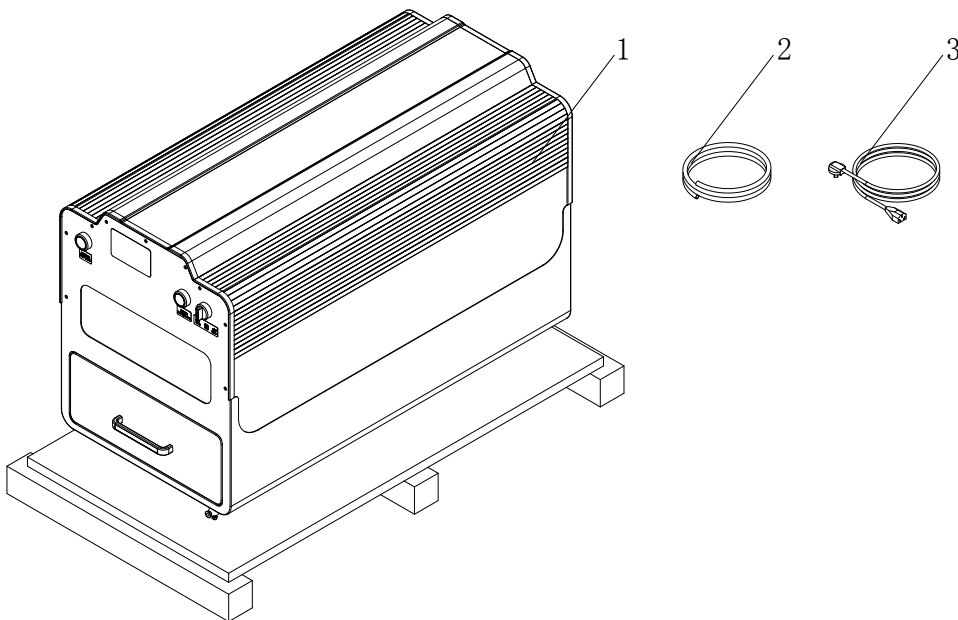


CAUTION Please read “safe guide ” carefully before installation

2.1 Open the wooden case, take out the machine.



2.1.1 Unpack the wooden box

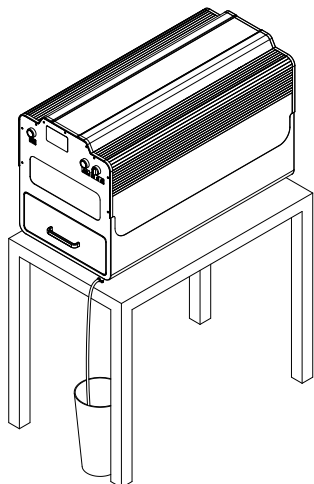


2.1.2 Check the parts, any missing, please contact with factory.

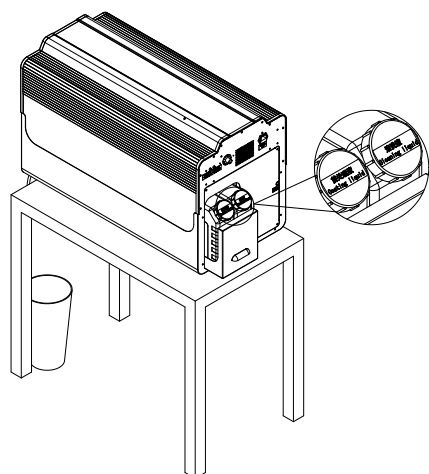
No.	Description	Quantity
1	Machine	1
2	Waste liquid tube	1
3	Power line	1

2.2 The Usage Of DTG Pretreatment Machine

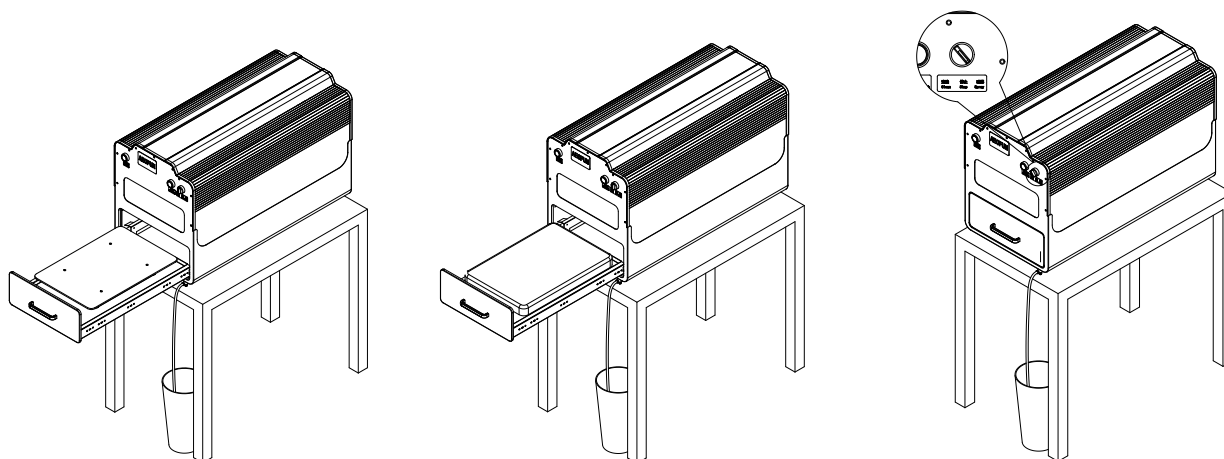
2.2.1 Put the Machine on the table, prepare a waste water bucket, ensure that the waste discharge outlet is off, Insert the waste liquid tube.



2.2.2 Pull out the containers, according to the marks to add the coating liquid and cleaning liquid(normal pure water).



2.2.3 Plug in, press the power switch, adjust the three-way switch, turn to spray. Press the working switch some times to check the spray status, ensure spray completely(This step is to confirm there is no air in tube, ensure the coating liquid are full with tubes). Pull out the platen, put the t-shirt smoothly, close the platen and press the working switch. Take down the t-shirt after spraying, repeat.



2. 3 Adjust the spray volume

According to different T-shirt fabric and color, you need to choose different spray volume. There are two ways to adjust the spray volume, one is to adjust the nozzle speed switch, turn to right, the speed will be faster and spray volume becomes smaller. Turn left, speed will be slower and spray volume becomes bigger. The other way is to adjust the cleaning liquid volume by throttle, turn right, spray volume will become smaller, turn left, spray volume will become bigger. We suggest the first way. Below is the testing data from lab. You can adjust the right spray volume according to the actual.

Dial no.	Spray time (s)	Spray volume (ml)
20	70	492.08
40	17	119.68
60	8	56.32
80	6	42.24
100	5	35.2

Chapter 3 Maintenance

The nozzle is precision machinery components, during working, beside the normal spraying, you also need to cleaning the nozzle to avoid blockage. There are two status to cleaning, one is daily cleaning after

working, turn the three-way switch to cleaning, the tubes and nozzle will be cleaned automatically, about 5s later, turn the three-way switch to stop and stop the cleaning, power off. The other status is cleaning the nozzle strainer after a long time working. When you find the spray liquid is shallow and can not cover the whole platen, you need to check the the strainer whether it is blockage, and clean it. See left picture, take apart the front cover and nozzle platen, you can take out the nozzle, screw off the straight-through joint, you can find the strainer, clear it by water, and install the nozzle again.

The coating liquid is weakly acidic liquid, which may cause the corrosion for the long time exist in the button of machine, so, please discharge all the waste liquid after daily working.

