

HEAT TRANSFERRING

We are looking for distributor, please ask us for better offer!
Sample and self-pickup service are available.

User Manual for Pneumatic Heat Press HTM-LCB5-III



Operation Manual (CE)

**This machine is designed not for
minors to use or food processing**

Please read this manual carefully before operation

[Learn More >>](#)



Tel: 626-342-7605

Welcome to visit our Los Angeles showroom
to discuss cooperation.

1. Dual Platen, high productivity
2. Air Operated, labor saving
3. Large Format, all over sublimation printing

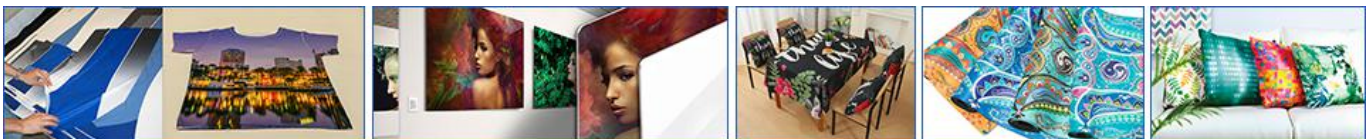


Congratulations on your purchase of the Air Operated Automatic digital heat press machine! This heat press machine has many exciting features, all of which are meant to help make your heat transfer pressing endeavors as successful and easy as possible. Please take the time now to thoroughly read through this manual to become acquainted with them. It will explain some key features, concepts and methods that will save much time and effort in using this press and in your heat pressing applications.

Throughout this manual, many areas and components of this machine will be referred to by specific names. Please refer to the illustrations below in order to become familiar with some of the terminology used in this manual.

I. Applications

This large format T-shirt heat press machine is widely used for transfer image for T shirts, cloth, cushion covers, rock photos, tiles, backpack school bag, jigsaw puzzle, etc.



T-shirts

Photo Frame

Table Cloth

Yoga Mat

Home Textile

① 31" x 39" Pneumatic Single Station Flat Heat Press Machine with Drawer



II. Heat Press Components



- ② Power Switch
- ③ Temp / Time Gauge
- ④ Pressure Meter
- ⑤ Pressure Adjustment Knob
- ⑥ Emergency-stop Button
- ⑦ Start Button



1. Master Switch: Cut off the electricity automatically when the electric is short circuit.



2. Voltmeter Voltage: Displayed at real time.

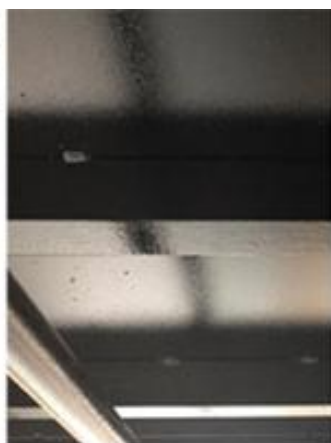


3. Display Controller: Easy operation.



4. Emergency Stop Button: Please press the switch immediately when you encounter an emergency in the operation.





5. Foot wheel: It's very convenient and easy to move and brake the machine.

6. Rail Like Track: Pull and push the working table easily and freely.

7. Barometer: the air pressure is adjustable according to different sublimation blanks.

8. Inside Structure: Neat wiring inside.

III. Specifications

Model	HTM-LCB4-I-LF	HTM-LCB4-II-LF	HTM-LCB4-III-LF
Voltage	110V, 60Hz, 1P, 41A	220V, 60Hz, 3P, 50A 380V, 60Hz, 3P, 27A	220V, 60hz, 3P, 60A 380V, 60Hz, 3P, 36A
Power	4500W	9000W + 1500W Air Compressor	12000W + 1500W Air compressor
Size	600mm x 800mm (24in x 31in)	800mm x 1000mm (31in x 39in)	1000mm x 1200mm (39in x 47in)
Temperature Range	0°C - 250°C (32°F - 482°F)		
Time Range	0-999sec		
Air Cylinder	One	Two	Two
Cylinder Distance	125cm (49.2in)	125cm (49.2in)	125cm (49.2in)
Largest Pressure	8kg / cm2	8kg / cm2	8kg / cm2
Machine Size	1200mm x 2400mm x 1650mm (47in x 95in x 65in)	1420mm x 3060mm x 1650mm (56in x 120in x 65in)	1620mm x 3660mm x 1650mm (64in x 144in x 65in)
Machine Weight	827lbs (375kg)	1135lbs (515kg)	1408lbs (639kg)
Packing Size	1200mm x 1550mm x 900mm 47in x 61in x 35in	1400mm x 1550mm x 1150mm 55in x 61in x 45in	1620mm x 1550mm x 1260mm 64in x 61in x 50in
Gross Weight	866lb (393kg)	1190lb (540kg)	1486lbs (674kg)



Warm Tips:

1. LCB4-I has only one air cylinder, other two bigger size machines with two cylinders.
2. The heat press machine uses electricity about 41A/50A/60 Amps, we suggest you prepare thicker cables for safety reason.
3. You need to prepare one air compressor. And the suggested specification is that power greater than 1.5KW, capacity about 30L, pressure more than 1MPa.

Heat Platen Test:

Each Single Copper sheathed heating rod is tested before it is cast in an aluminum alloy or Mica Sheet. These heating rods are comparable to those found in industrial ovens that heat up quickly, work efficiently and last many years.

Finished Machine Test:

1. Turn on the machine, let it heating up to 200°C (392°F).
2. Keep the temperature stay at 200°C (392°F) for at least half an hour.

IV. Installation

4.1 installation precautions

1. Before unpacking, carefully check if there is damage for the packing and machine during transportation.
2. After unpacking, check if the service parts are correct as the packing list.
3. The installing place should be provided enough space for operating and free of dust, novapor, no corrosive gas, no combustible or explosive substance around. Keep the machine away from wind blowing place, otherwise will affect the roller temperature which might bring the laminating quality.
4. After installation, adjust each caster to reach level ground. The casters only be used on even ground for short distance movement.

Not ice: Please move carefully since it is heavy equipment.



4.2 The Machine Assembly

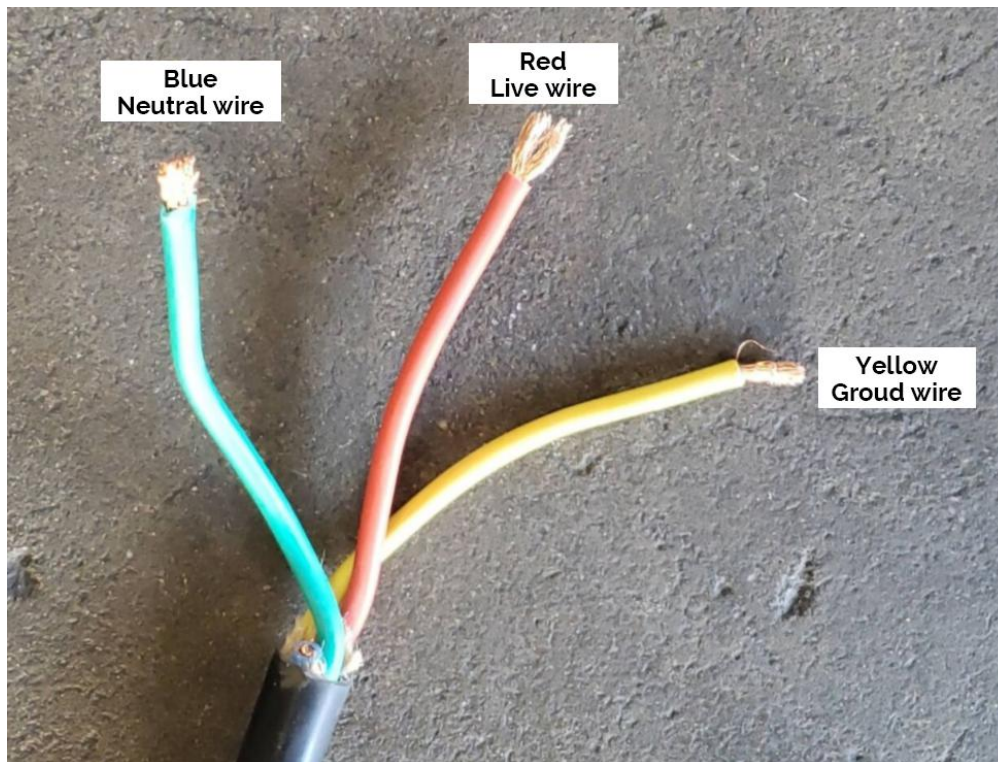
- 1) Take out the machine from the packing.

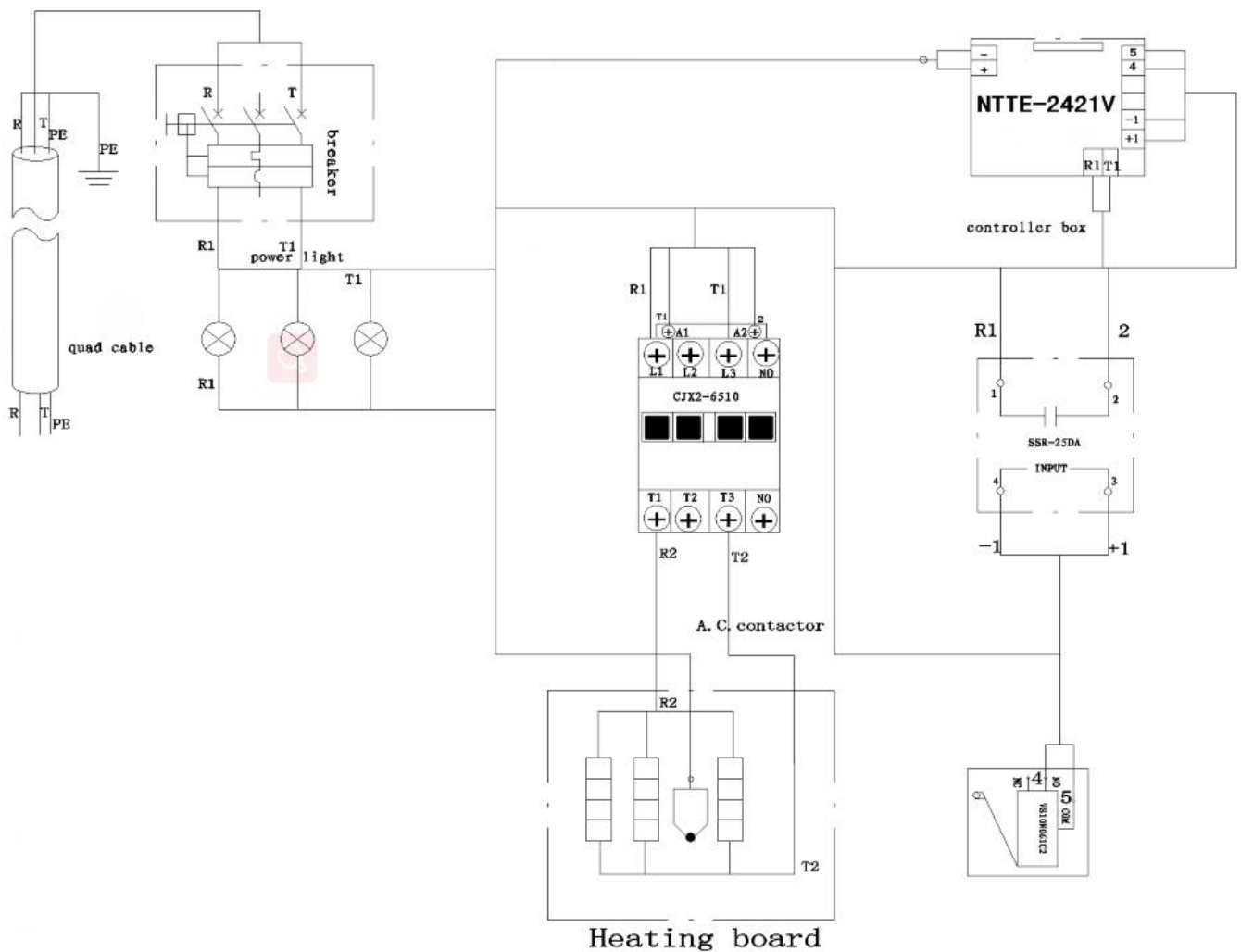
Place the heat press on a stable flat surface with good ventilation. Don't put much stuff around the machine to avoid the necessary problem. The power cord not allow to put on ground nor with object on top.

- 2) Wiring Diagram

It was installed the standard power supply plug, before plug in, please check your power supply voltage is same as the machine's rated operating voltage, also should verify the access to the socket is in requirements, and have a good grounding, and the capacity is large enough.

HTM-LCB4-I-LF Model heat press machine, 1 phase power, circuit diagram





- 3) Turn on power switch① and connect air compressor, place the material on working table.
- 4) Adjust the pressure with pressure adjustment knob④, lift this knob and rotate it for adjusting pressure of air compressor. Clockwise for adding pressure, anticlockwise for decreasing pressure (we advise 0.3-0.6)





5) Set temperature & time with temp/time gauge ②

1.Set temperature



Press STE button



"Temperature setting"blink



Press arrows "Δ" or "▽" adjust temp you need

2.Set time



Press SET button after setting temp



Press arrows "Δ" or "▽" adjust temp you need



Press SET button after setting



- ① The temperature for heating plate will start to rise up, when it reaches the temperature you have set, place the material on the working table.
- ② Push the working table inside, then press Start Button ⑥ the heating plate will press down.
- ③ The heating plate will lift up automatic when the time you set is reached, pull out the working table, and then take out the materia.

Note:

- Because **difference** materials have different thickness, **the temperature** and time required **are** different.
- Pls try a small sample to get the right temperature and time needed before **starting** large quantity printing.
- Fabric requires **the temperature** about 180 °C (356 °F), Fabric clothing use with sublimation paper: 30-50 sec, 100% cotton clothing use with transfer paper: 15-20sec.
- After using for a period of time, check whether there is water in the drainage cup. If necessary, turn on the drain switch below. After the water is drained, tighten the switch.
- Avoid contact with the heating plate during heating to avoid burns.
- Successful transfer requires the correct time. The cooperation of temperature and pressure, the thickness and material of the stamped object and the type of transfer paper all affect the transfer effect.
- Transfer paper must be approved for sample trial printing before mass production.
- The function of the temperature control instrument is complicated, and extra adjustment operation is not required except for setting the temperature value, otherwise it is easy to

cause the instrument program to be disordered and not to work properly !!!



V. Problems and Solutions

No.	Troubles	Reason	Solution
1	Picture burning	Heating time is too long or heating temperature is too high.	Adjust time or temperature.
2	Fails to heat up, but display well	Heating plate or relay broken	Check the heating plate or relay
3	Lack of color, faded image.	Insufficient temperature and / or heating time.	Adjust the temperature and / or increase the heating time.
4	Darkened, deep color; blurred image.	Heating time is too long or heating temperature is too high.	Adjust the temperature or heating time.
5	Although the main is plugged in and the power-on button is pressed, the LED does not light up.	The power plug is not well - connected	Check the plug to ensure connection.
		The voltage of the main does not adaptable to the required voltage.	Check the voltage of the main to ensure its adaption to the machine.
		Emergency stop is not switched on	Turn on the emergency stop.
		The fuse link beside the power cable is un-installed or damaged.	Check the fuse to ensure it is not damage.
6	The actual heating temperature exceeds the setting temperature	Relay broken	Replace the relay
	The cylinder does not move	When the heating plate cannot be pushed up and down, check whether the pressure gauge on the air cylinder shows that there is pressure, or observe whether the solenoid valve in the control box is moved when the start button is pressed	

VI. Maintenance

6.1 Notice

- 1) Only experienced operator could open the cabinet, be noted following measures;
- 2) Don't use abrasive cleaner to clean the machine surface.
- 3) Check the rotation parts regularly and fill high-temperature grease to lubricate the two bearings of heating rollers.
- 4) Do not wash the machine with water. This can damage the electrical circuits, cause electrical shock or corrosion.



5) During maintenance, don't run the machine.

6) During maintenance, don't change, move and dismantle the safety parts. Make sure the safety parts before using.

7) Cut the power supply before dismantling and assembly.

6.2 Cleaning

1) To extend the lifetime of the machines, please ensure the machine are clean.

2) Make sure environment clean and keep away from obstacles.

6.3 Checking

In order to ensure your safety, please check the safety of the machine regularly. If you find failures in the check, please refer to the section of Trouble shooting and solution.

6.3.1 Visual Checking

Visual checking prior to maintenance.

1) Power supply cable undamaged.

2) Foot wheel is stable.

3) Any damage on machine

6.3.2 Safety Parts Checking

Emergency switch.

1) Turn on machine

2) press the emergency switch, machine stop or not

3) Turn on machine when emergency switch is on

4) Release the emergency switch, turn on and start to run machine.



HEAT TRANSFERRING

We are looking for distributor, please ask us for better offer!

Sample and self-pickup service are available.



Sign-in-Global.us

ONLINE WHOLESALE FOR AD & SIGNAGE PRODUCTS

WARRANTY CARD

MODEL		LOT #	
BUYER		DATE	
SELLER		TEL	

Notes

- The warranty card should be filled by seller and kept by buyer. Alterations are prohibited.
- The guarantee period is two years. The repair is free of charge within 6 months and will be charged with material and labor cost after 6 months.
- No free repair is available for any damages caused by the improper use.

[Learn More >>](#)



Tel: 626-342-7605

Welcome to visit our Los Angeles showroom to discuss cooperation.