



California Global-Signs Information Technology

Website: www.Sign-in-Global.us

ADD: 18545 E.Gale AVE CITY OF INDUSTRY, CA, 91748, USA

TEL: 626-342-7605

Email: info@sign-in-global.us



EASY DIGITAL MUG PRESS

This Manual is applicable for mug press serial products

USER MANUAL

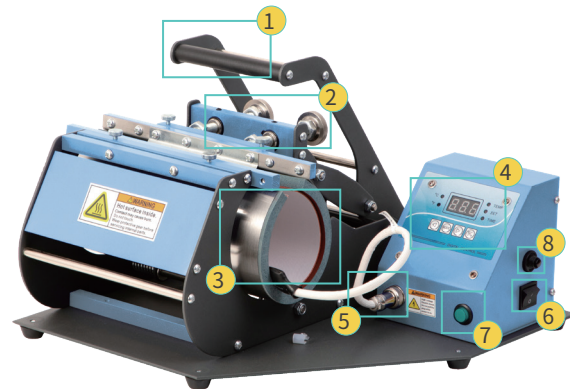
Item No.: HTM-SIC03, HTM-SIC04, HTM-SIC05V, HTM-SIC06,
HTM-SIC06-225H, HTM-SIC06-2, HTM-SIC06-6,
HTM-SIC06-7



EASY MULTIFUNCTIONAL MUG PRESS

Power	450W
Voltage	220V / 110V
Temp. System	Celsius & Fahrenheit
Temp. Range	0~482 Fahrenheit; 0~250 Celsius
Time Range	0~999 Seconds

(Arc)



Structure:

1. Pressure Handle
2. Pressure Knob
3. Mug Heater
4. Digital Control Meter
5. Accessory Interface Port
6. Power Switch
7. Execute Key

(By pressing this, the machine will start counting down after heating up to the set temp. from the lowest temp.)

8. Safety Button

(This button will bounce up automatically and interrupt the current if it is too strong. Press it again to electrify the machine.)

(Standard)



HEATERS AVAILABLE



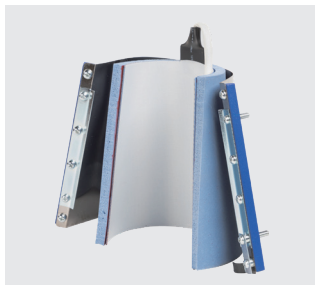
HTM-SICMW3
Silicon Mug Wrap I for
11-15oz Mugs



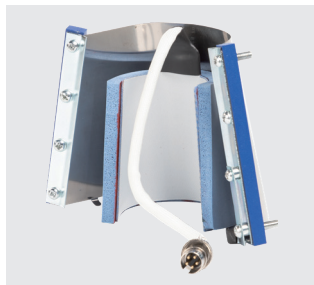
HTM-SICMW4
Silicon Mug Wrap II for
6-10oz Mugs



HTM-SICMW5
Silicon Mug Wrap for
12oz Latte Mugs



HTM-SICMW6
Silicon Mug Wrap for
17oz Latte Mugs



HTM-SICMW9
1.5oz Shot Glass Heater

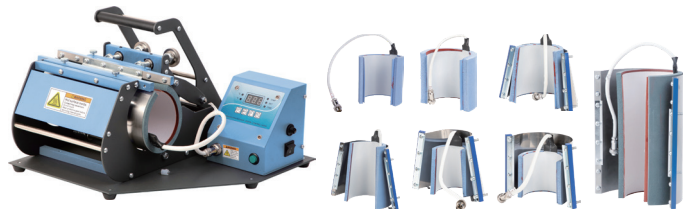


HTM-SICMW10
3oz Mini Mug Heater



HTM-SICMW225H
Suitable for straight mugs and
tumblers with a diameter of 7 to 8cm,
and capable to transfer images or logos
within a height of 20.3cm/8 inches.

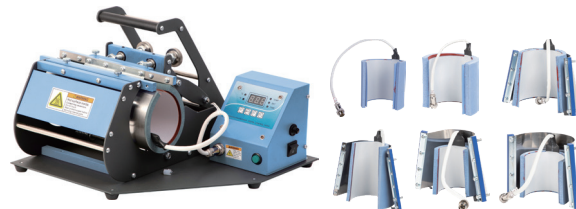
MACHINE ITEM NUMBER



HTM-SIC06-7

Heaters Included:

HTM-SICMW3, HTM-SICMW4, HTM-SICMW5, HTM-SICMW6,
HTM-SICMW9, HTM-SICMW10, HTM-SICMW225H



HTM-SIC06-6

Heaters Included:

HTM-SICMW3, HTM-SICMW4, HTM-SICMW5, HTM-SICMW6,
HTM-SICMW9, HTM-SICMW10



HTM-SIC05V

Heaters Included:

HTM-SICMW3, HTM-SICMW4, HTM-SICMW5, HTM-SICMW6



HTM-SIC04

Heaters Included:

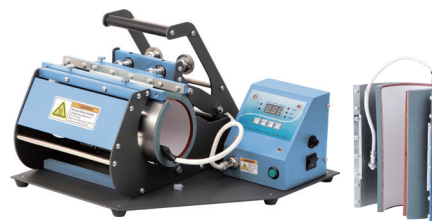
HTM-SICMW3, HTM-SICMW4

MACHINE ITEM NUMBER



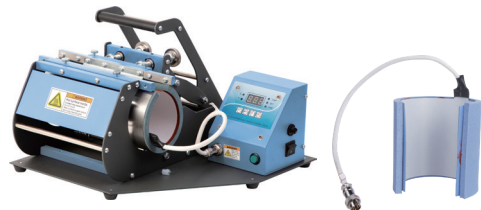
HTM-SIC06-2

Heaters Included:
HTM-SICMW3, HTM-SICMW225H



HTM-SIC06-225H

Heaters Included:
HTM-SICMW225H



HTM-SIC06

Heaters Included:
HTM-SICMW3

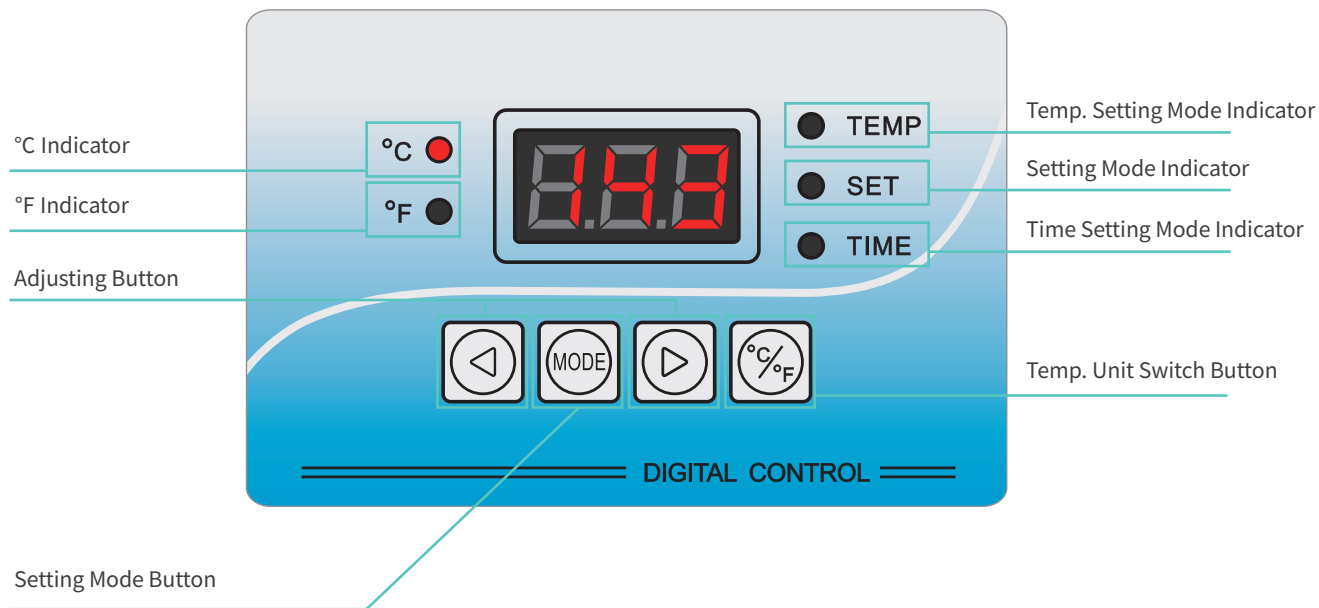


HTM-SIC03

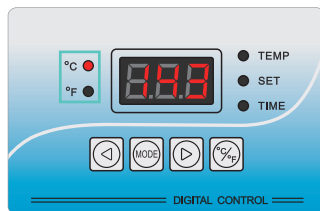
Heaters Included:
HTM-SICMW3

KNOW THE EASY CONTROL METER

The machines of Easy series are equipped with the same control meter with simplified design. It is so easy to operate that you can master all the Easy series of machines at once.



How to set time and temperature?



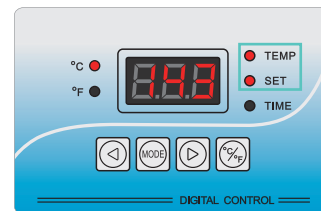
- 1 Press “” to switch the temperature unit;





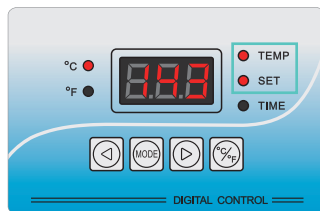
- 2 Press “” to set the lowest temperature, the “” light is on;



- 3 Press “” and “” to adjust the value;



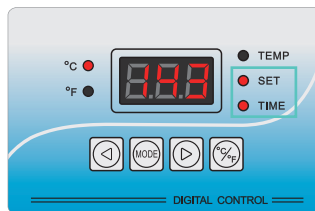
- 4 Press “” to save the value and enter the printing temperature setting mode, the “” light is on;



- 5 Press “” and “” to adjust the value;



- 6 Press “” to save the printing temperature and enter time setting mode, the “” light is on;



- 7 Press “” and “” to adjust the value;



- 8 Press “” to save the value.

Note: Setting the lowest temperature is a way of protection, which can keep the mug press in a stable temperature to save the time of heating up later, protect the mug heater from being damaged in a constant high temperature. Once being tuned on, the machine will heat up to the lowest temperature automatically, and keep the temperature from dropping below the lowest.

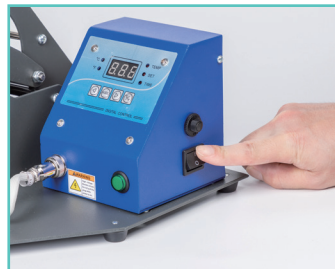
How to print mugs with Easy Mug Press?



- 1 Choose your favorite image, and stick it on the mug with thermal tape;



- 2 Adjust the pressure by turning the pressure regulator; Press the mug to check if you find the best pressure;



- 3 Turn on the Easy Trend Mug Press;



- 4 Set the lowest temperature, printing temperature and printing time;



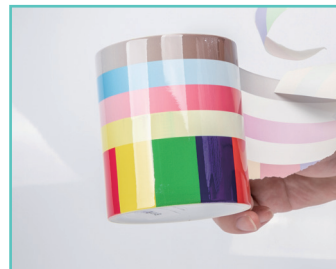
- 5 When the machine heats up to the lowest temperature, put in a mug and press down the handle;



- 6 Press the execute key, the machine will start heating up from the lowest temp. to the printing temp., and counting down;



- 7 Release the handle when the time is up;

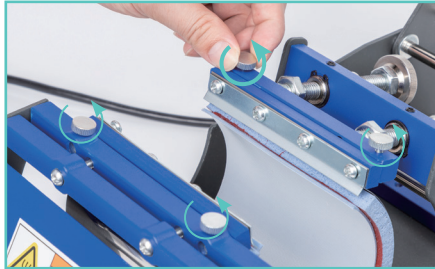


- 8 Take out the mug to check the printed image.

How to Replace the Heater?



- 1 Turn off the press, loosen the screw and pull out the connection cable;



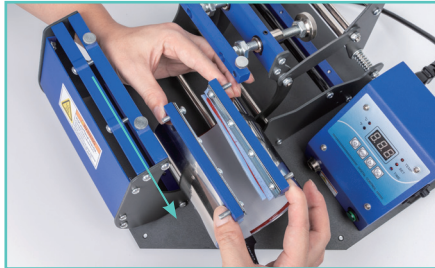
- 2 Loosen the four screws above that used to fix the heater;



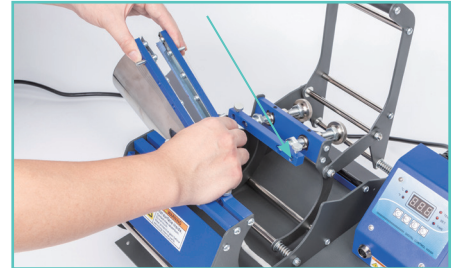
- 3 Unlock the hook and take out the cable;



- 4 Hold and press the heater with two hands on the two ends to remove the heater from the screws;

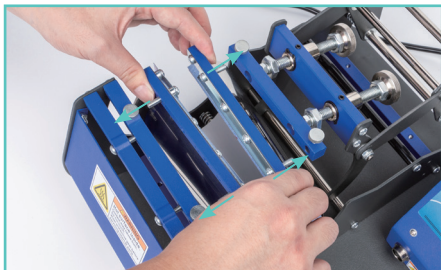


- 5 Push out the heater slowly;

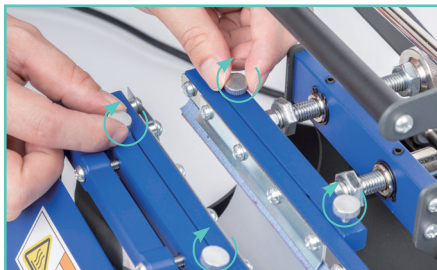


- 6 Hold and press the heater you want to replace with two hands on the two ends, and push it in;

How to Replace the Heater?



- 7 Line the four screws up with the four holes, and insert them in;



- 8 Tighten the four screws;



- 9 Connect the cable to the controller by inserting it and fastening the screw;



- 10 Fix the cable with the rubber hook;



- 11 Now you have installed the other mug heater, and you can print different mugs.

Note: This way to replace mug heater is applicable to both Standard and Arc versions.

No.	Item Name	Temp.(°C / °F)	Time(S)	Remark
1	Ceramic/Glass Mug	180°C 360 °F	120	1. Print on sublimation paper, mirror image; 2. Use mug press; 3. Place the mug into the mug press in proper position to avoid handle breaking; 4. Use medium pressure.
2	Water Bottle (Aluminum/ Stainless Steel Material)	180°C 360 °F	35-45	1. Print on sublimation paper, mirror image; 2. Take off the lid before printing; 3. Use low pressure.
3	Plastic Mug	170°C 340 °F	120	1. Print on sublimation paper, mirror image; 2. Put the printing tool into the mug before printing to avoid deformation; 3. Use low pressure.

1. The parameters above are just for PYDLife heat press machines.
2. The parameters above are for reference only. Please test to find the best parameters for your own product.

FAQS:

Colors are lighter	The temperature is too low, the pressure is uneven, or the time is too short.
Printed picture is vague	The printing time is long, which causes the ink spread.
Colors are less bright	The pressure is too high or the temperature is too high.
Printed picture is partially vague	The heat is uneven.
Colors are different	The pressure is uneven or the surface of the printed item is uneven.
The paper sticks on the printed item	The temperature is too high or the coating of the item is in poor quality.

NOTES:

1. Do not heat the machine without a mug inside in case of burnout.
2. Do not touch the heater directly without any protection.
3. If the machine works for more than 1.5 hours, it is better to turn it off for a 20-minute break.
4. Kindly suggest to set the highest temperature below 420 °F or 200°C to prolong the life of machine.