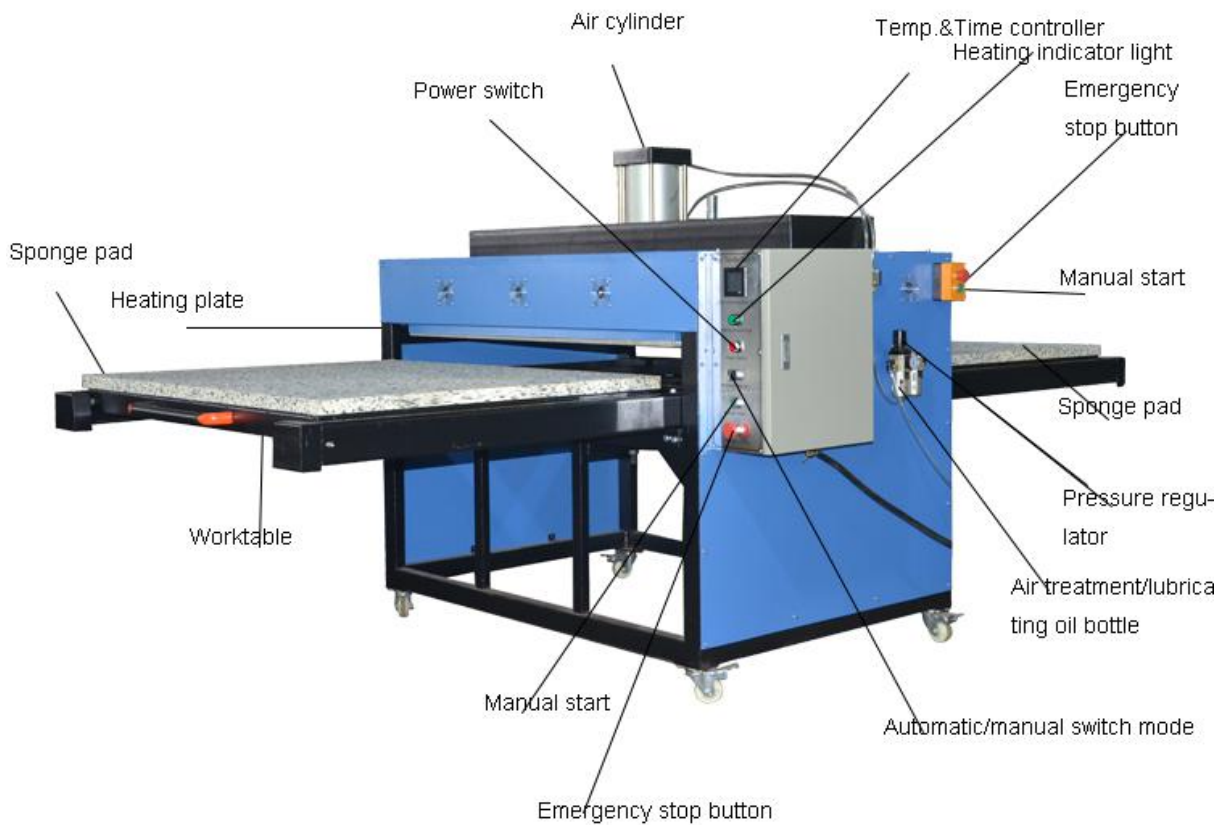


## Instructions of sublimation heat transfer machine



### Technical parameters:

(Upon receipt of the machine, please confirm whether your home's power supply can drive the machine)

Size:100\*120cm

Voltage: 220 V

Power:12KW

Electricity:54.5A

Time range:0-999Sec

Temperature range:0-750°F

Working pressure:0-8kg/cm<sup>2</sup>

**Main Application:**

This machine is especially suitable for large format cloth printing, large billboard printing, garment printing, and ceramics, glass, sheet, metal, decorative building materials printing, as well as other printings. The platform is a drawer type design with high-temperature resistant mesh laid. It is light and handy, energy-saving and good-looking. We adopt the digital microprocessor controller to assure accurate display of time and temperature.

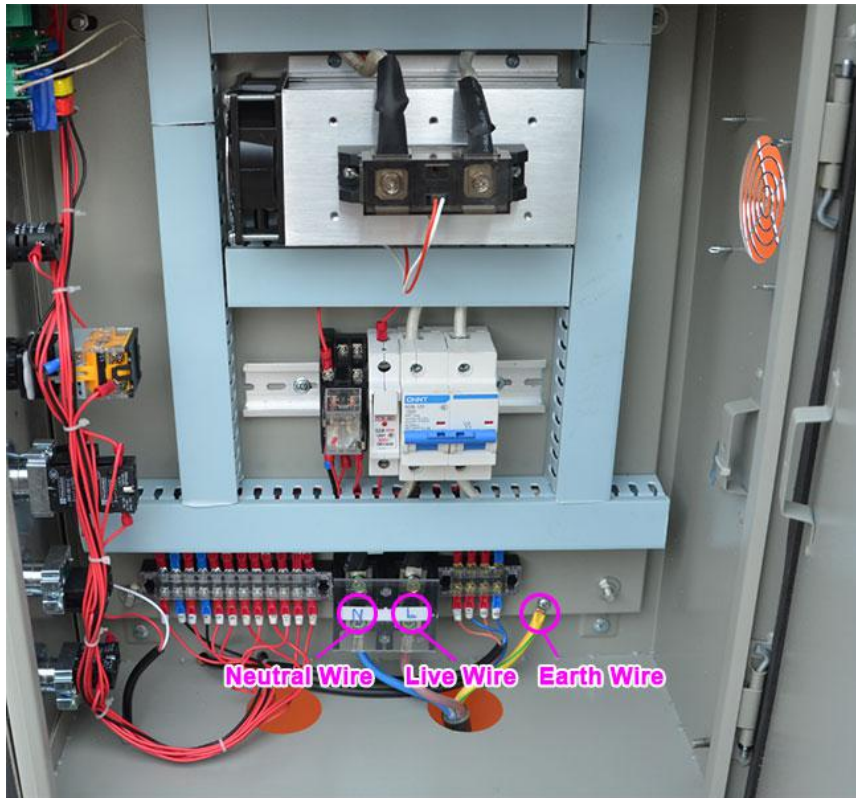
**Product Feature:**

1. Uniformity-heating, working area is large, it is suitable for large area of printing.
2. The platform is designed with the pulling type frame design with high temperature resistant net cloth laid which has changed the old design style of using thick plate. This new mode makes the operation more easy and energy saving.
3. The heater and base platform are aluminum casting, to ensure the uniformity and stability of printing pressure and temperature.
4. This machine adopts the imported components, automatic spacing with advantages of accuracy, reliability and security and it can be used for long time.
5. Digital microprocessor controller control temperature and time, We use digital timer which complete the work according to the signal instructions.
6. Our pressure adjuster enables you to adjust pressure freely, the bottom plate is equipped with high-temperature resistant ironing board and imported wool blanket, which is widely used in printing.
7. You can turn the switch freely to manual and auto mode, it has high efficiency.

**Operating steps:**

Attention : The machine must be properly earthed.

Power core should be connect air break switch, note L line/N line/E line like picture.

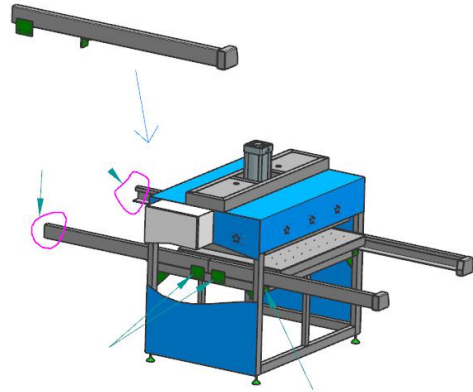
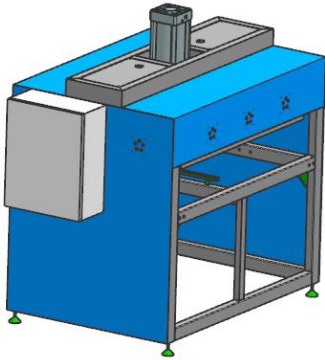


1. Plug in, turn on the switch of the circuit breaker, then the indicator lights up.
2. Turn on the power switch.
3. Pre-set the temperature controller, wait till the temperature reach the setting temperature, OUT1 indicator go out, then flash automatically.(heat-retaining mode)
4. Set the time controller to the required time.
5. When temperature reaches the setting temperature, then turn to automatic or manual mode, push the platform to correct position, (if turn automatic mode, you just push in work-plate. If you turn to manual mode, please push work-plate in and press green button to start) then the cylinder start working. It will return to original position after reaches the setting time.
6. When the mode switch turn to “auto” mode, push the platform to the right position, the upper plate will press down automatically and return to original position after reaches the setting time,. (Attention: if the platform is not in the right position, and the machine won’t start work.
7. The red circular button is “**emergency stop button**”, the machine won’t work as the heater will go up immediately if you press this button,. If you want work again, turn the red circular button to clockwise direction, then the button leave automatically and the machine works again.

## Installation steps:

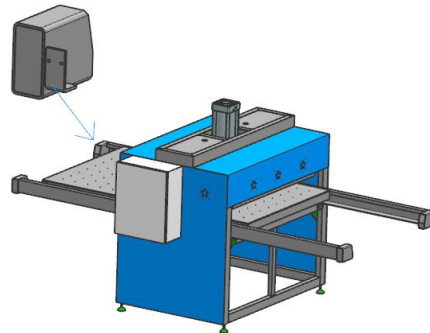
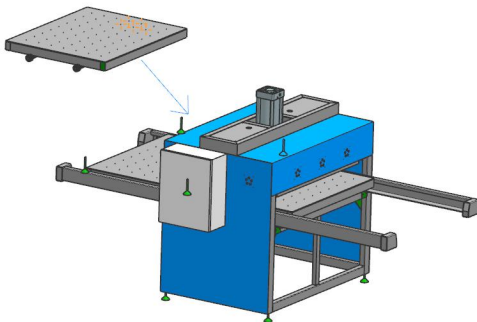
One.: Place the main body of the machine in an appropriate space, connect with an appropriate air pump to raise the heating plate, and take out the two working platforms.

Two.: Assemble four slides to the rack according to the number.



Three: Put the working platform into the slide according to the number.

Four: Install the limit



## Maintenance

1.About pressure: if the pressure is not enough or too high, you can adjust the handle above the pressure filter, the pressure will increase as handle turn to clockwise direction, and vice versa.

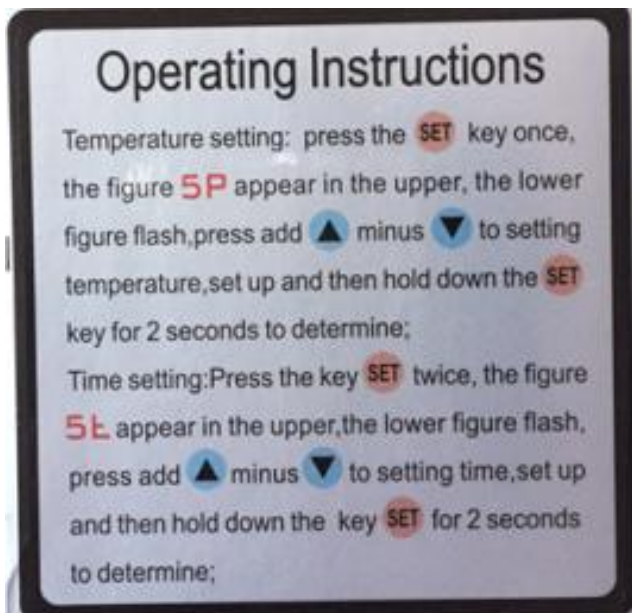
2.About time: if the machine does not go up automatically when heating time is up.

1) Check the air pressure whether in a normal condition.

2) Check circuit

3.About temperature: After temperature setting, if the indicator OUT1 lights up but the heater does not heat up, please check the circuit.(Temperature controller, Solid State Relay)

## Heat transfer temperature & time setting:



mpir  
time  
°C, ti  
0°C



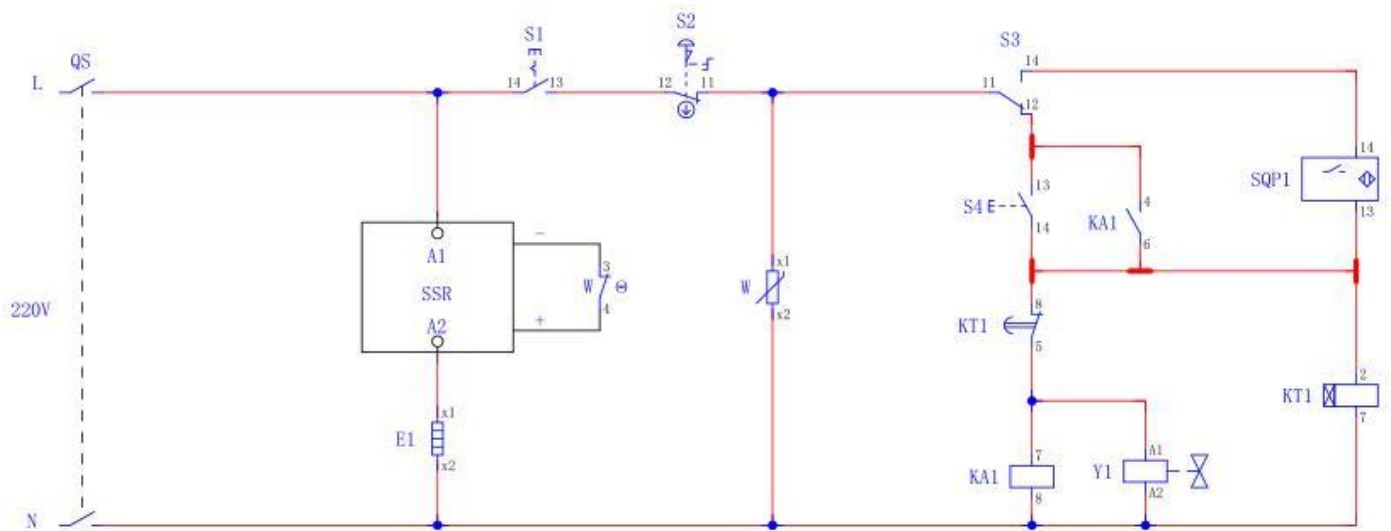
4. Diamond heat transfer-temperature:180°C (356°F) ,time;10~12sec
5. Iron plate heat transfer-temperature:180°C (356°F) ,time:30sec

## After-sale service

Thank you for purchasing our products!We depend on high quality,aim at good reputation.We have devoted great efforts to the production,research and after-sale service of our machine for many years.

### We promise:

- 1.If the machine breaks down under normal condition within a year, we'll provide free repairment and accessories.
2. If the machine damages or breaks down due to improper installation、improper maintenance or transporting damage, we'll provide maintaining and technical guidance ,charge at accessory cost price.
- 3.If the machine breaks down after a year, we'll provide machine maintenance ,only charge at accessory cost price.



W:Temperature Controller

S1:Rocker Switch

S2:Emergency Stop Switch

S3:Change-over Switch

S4:Automatic Recovery Button Switch

Y1:Solenoid Valve

KA1:Relay

KT1:Time Relay

B1:Thermocouple

E:Heating Plate

SQP1:Proximity Switch