

CALCA A3 DTF PRINTER User Manual

Item Code: DTF-XSC-A3-US



Thank you very much for choosing our CALCA brand series DTF printer, please read the manual carefully, including the operation and maintenance to ensure the best output and the lifetime of the machine.

Direct Transfer Printing is a revolutionary new printing technique that's more affordable and accessible compared to DTG, screen printing, sublimation or laser white toner transfers.

What sets DTF apart from other transfers?



- ✓ A great option for small orders.
- ✓ No cutting and weeding required.
- ✓ Crisp, defined edges and images from start to finish.
- ✓ Low cost on waste.
- ✓ Low investment – high reward (Print Cost: \$0.007/inch²).

Works on Most any Fabrics

DTG technology works best on cotton pre-treated fabrics while DTF opens the door to a wide range of choices and is capable of printing onto non-treated cotton, silk, polyester, denim, nylon, leather, 50/50 blends, and more. It works equally well on white and dark textiles.



I. Machine Information

At just A3 wide, the DTF printer fits into any size print shop. And with CALCA DTF film, powder and Inks, you can easily and quickly create custom t-shirts and apparel. This compact printer is with a low price point and perfect size, it is the best option for anyone entering the custom apparel marketplace.

Perfect Print Effect, Wide Applications

- > Sharp vibrant images, eye-popping print effect.
- > Pattern will be washable, soft to the touch, and stretch without cracking.
- > Any fabric textile cloth material, any color, any part printing.

Technical Specs:

A3 (310mm / 12.2 inches) Maximum print width

Dual Epson XP-600 Printheads (CMYK + 6W)

Printer Size: 35.4in x 18.5in x 19.7in (900mm x 470mm x 500mm)

Printer Weight: 107 lbs (49 kg)

6 Pass and 8 Pass Print Resolution

Speed: 6 pass: 4.5m² / h; 8 pass: 3.5m² / h

1 Liter per color ink bottle capacity

Printing Software: Flexi PhotoPrint Rip / Maintop 6.1 Rip

Printing Resolution: 720 / 1080 / 1440dpi

Print Head Cleaning: Automatic

Platform Suction Adjustment: Yes

Rewinding Function: Automatic

Heating Sections: Pre-heater, printing bed heater, rear heater: 86°F-149°F (30°C-65°C)

Requirements:

- > Working Power Supply: AC 110V / 220V, 50HZ / 60HZ, 1 phase.
- > Current: 1.5A (220V), 2.5A (110V)
- > Operating System: XP / Win7 / Win10
- > Temperature control set to 68°F-82°F (20°C-28°C) and 65 - 75% humidity.

II. Installation Precautions

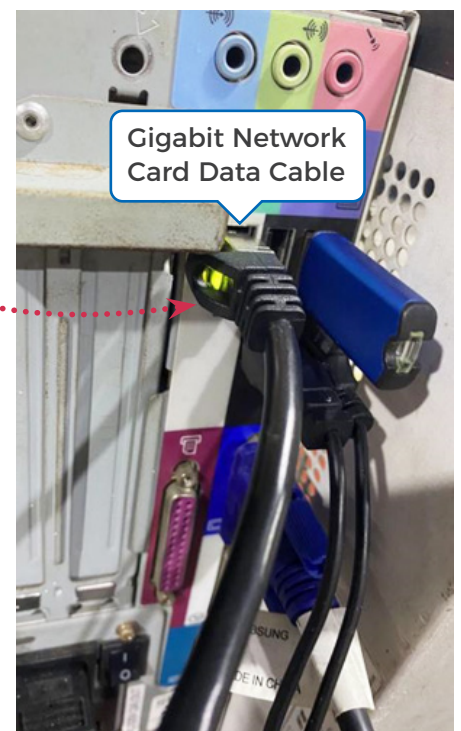
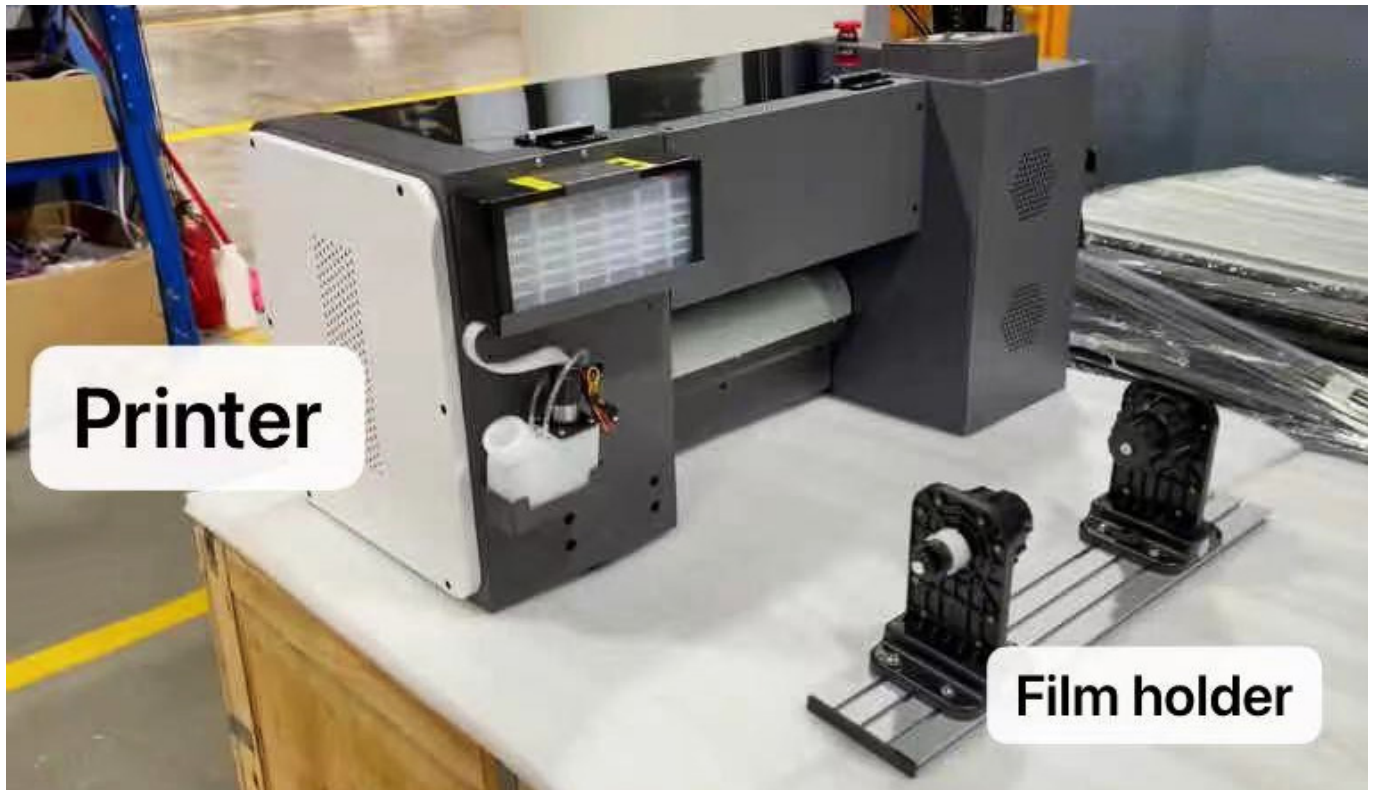
1. Before unpacking, carefully check if there is damage for the packing and machine during transportation.
2. After unpacking, check if the service parts are correct as the packing list.
3. The installing place should be provided enough space for operating and free of dust, no vapor, no corrosive gas, no combustible or explosive substance around. Keep the machine away from wind blowing place, otherwise will affect the roller temperature which might bring the laminating quality.

Notice: Please move carefully since it is heavy.

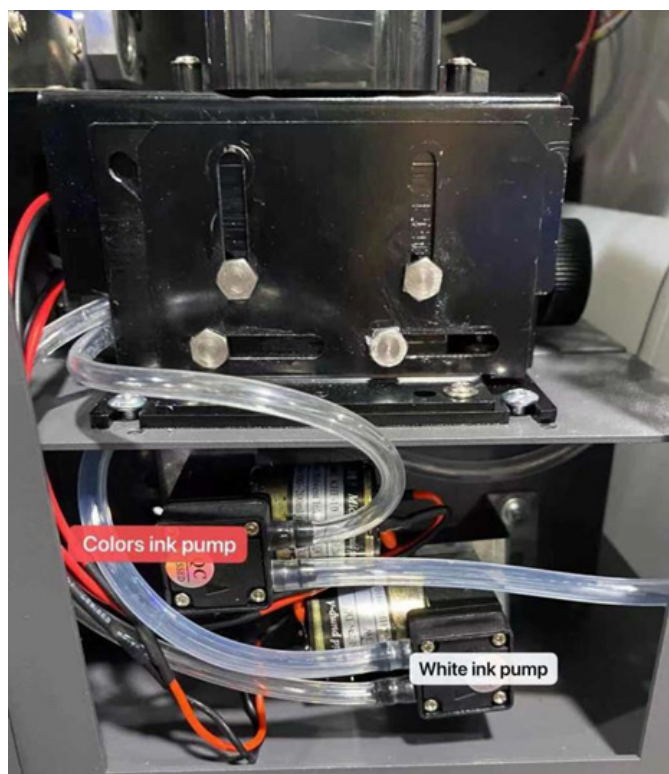
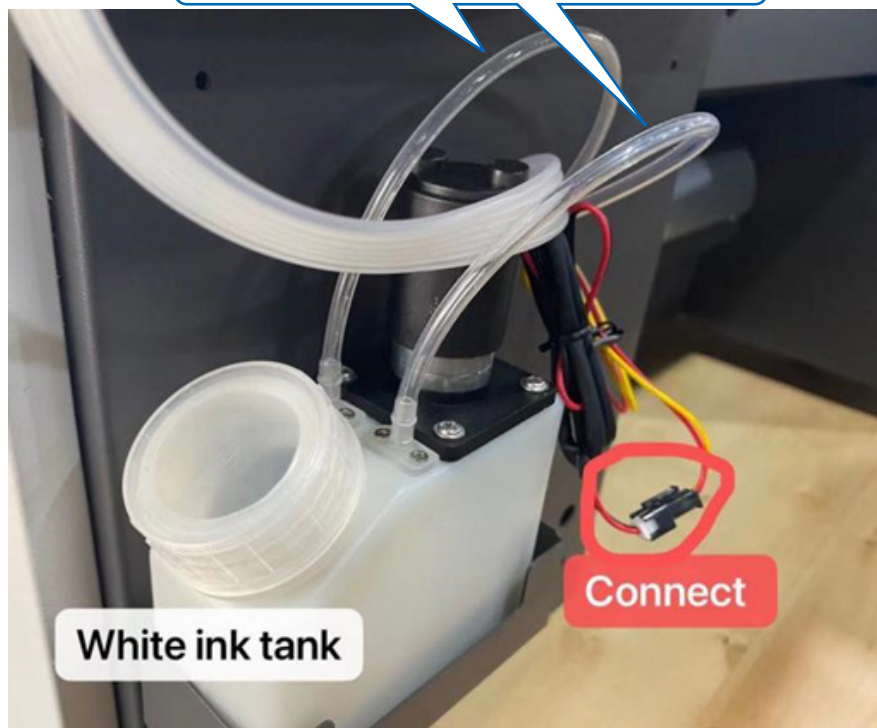
III. Parts Identification

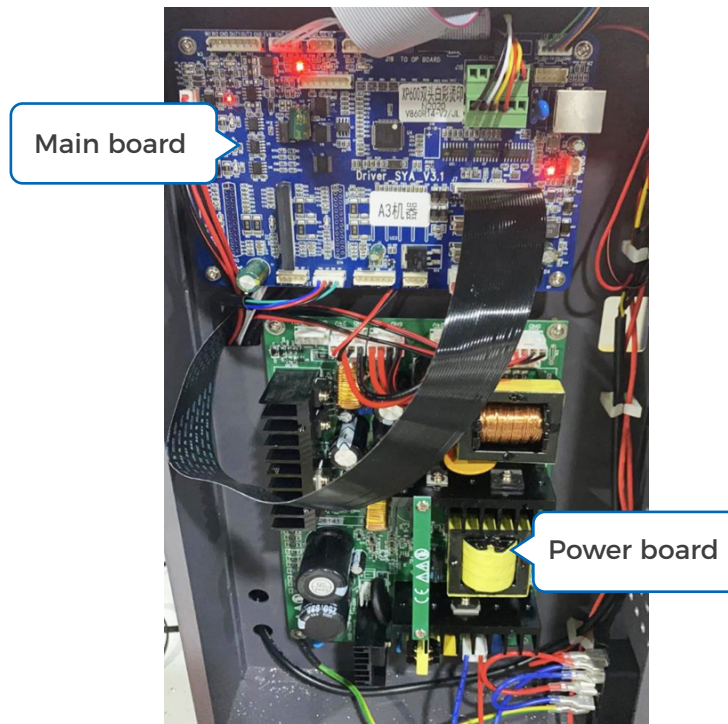


1. **Emergency Button:** Turn on / off printer.
2. **Control Panel:** Change language, Manual pump. Print head clean, Nozzles check..etc..
3. **Encode Strip:** Keep it clean.
4. **Paper Guides:** When attached on both edges of media, a curvature of media can be controlled to some extent.
5. **Vacuum Platform:** Suck film, can set suck power levels on control panel.
6. **Pinch Roller:** Press and move the film forward.
7. **Wiper:** Clean the nozzles face while cleaning.
8. **Waste Ink Pump:** Pump waste ink inside.
9. **Carriage:** Movement part, print heads, damper installed inside.



These two white ink circulation tubes, one for white ink in, then another for out.





Your Computer should be Gigabit network card

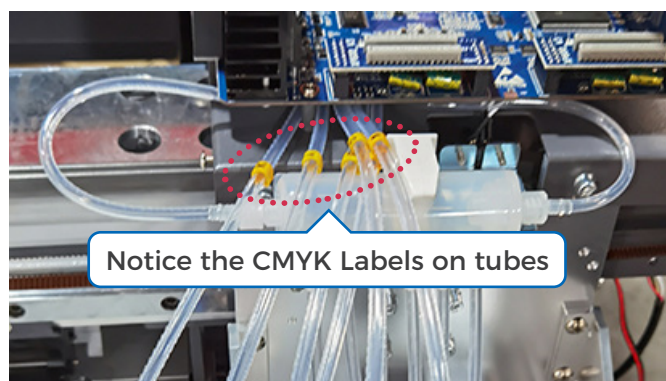
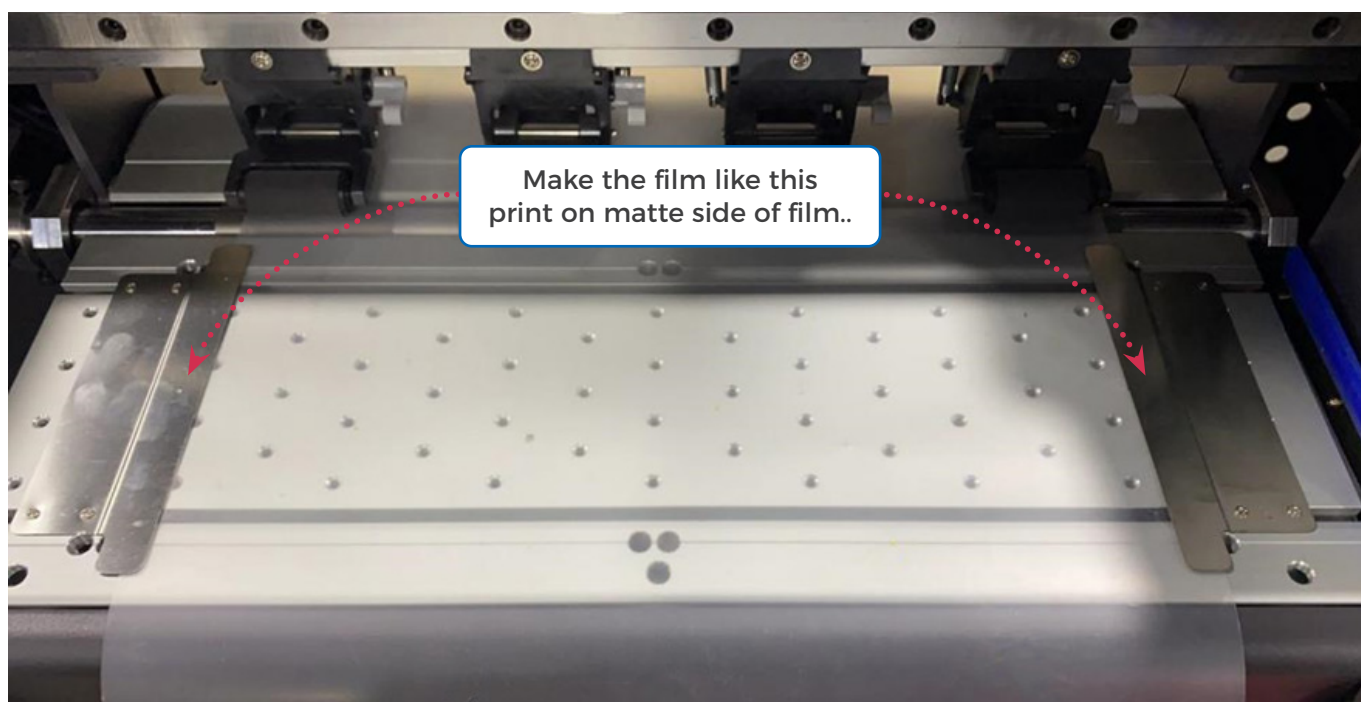
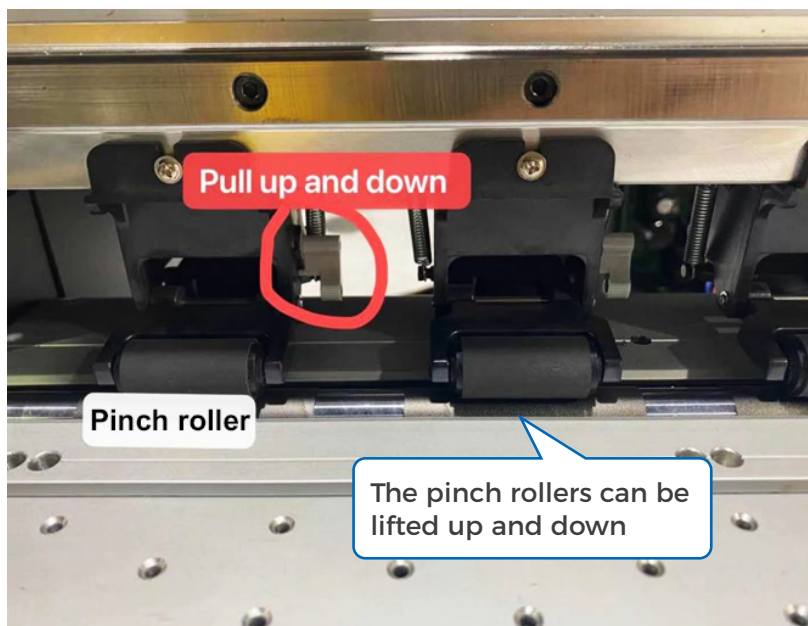
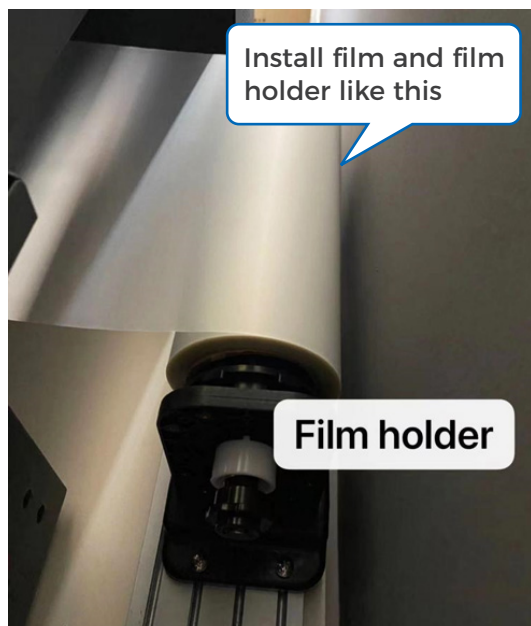
Before network connection, first check the computer network card to a certain Gigabit network card to connect properly,

The differences between 100 megabit network card and Gigabit Network Card:

A Gigabit Network Card contains these characters: Gigabit, GBE, 10 / 100 / 1000M, RTL8169. A hundred megabyte network card contains these characters: Fast Ethernet, 10 / 100, FE.

Go to the “Device Manager” and check the network adapters and you’ll see the following is a hundred megabyte network:



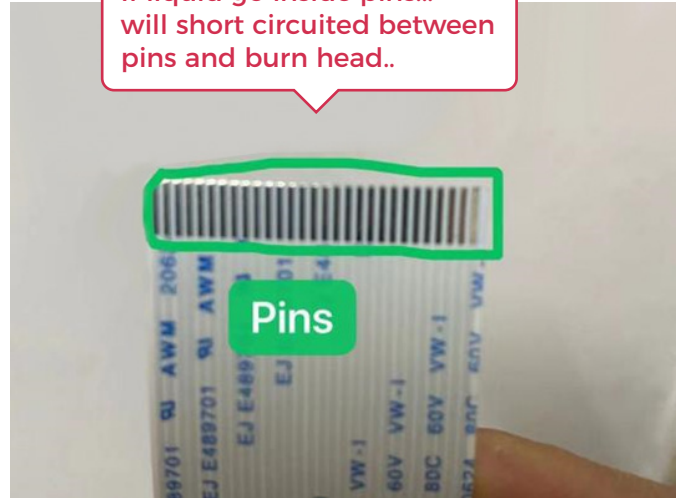


Install two xp600 print heads on the pots..

When insert dampers..
Put dry napkin at both
sides.. protect print
heads if have ink drop
down on cables.

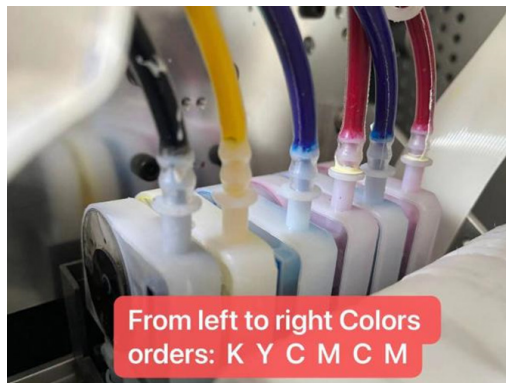
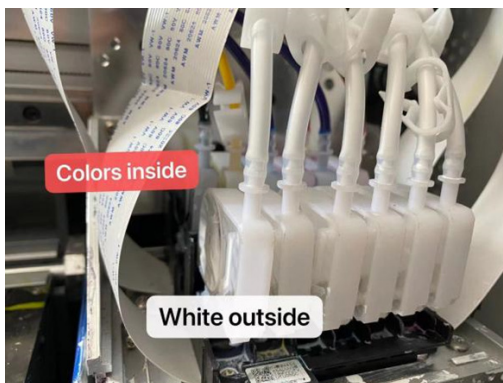


If liquid go inside pins...
will short circuited between
pins and burn head..

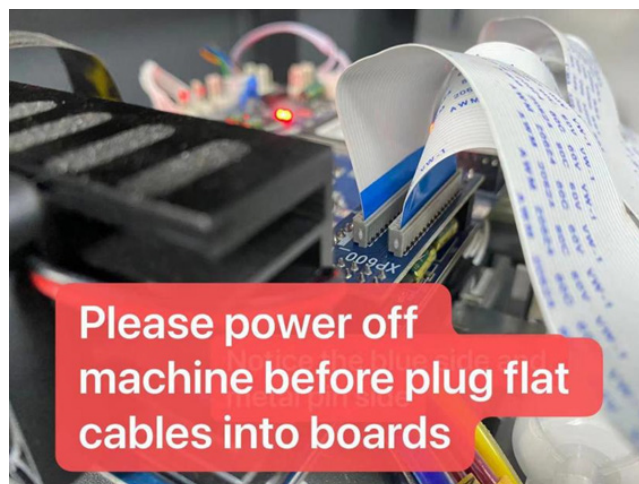
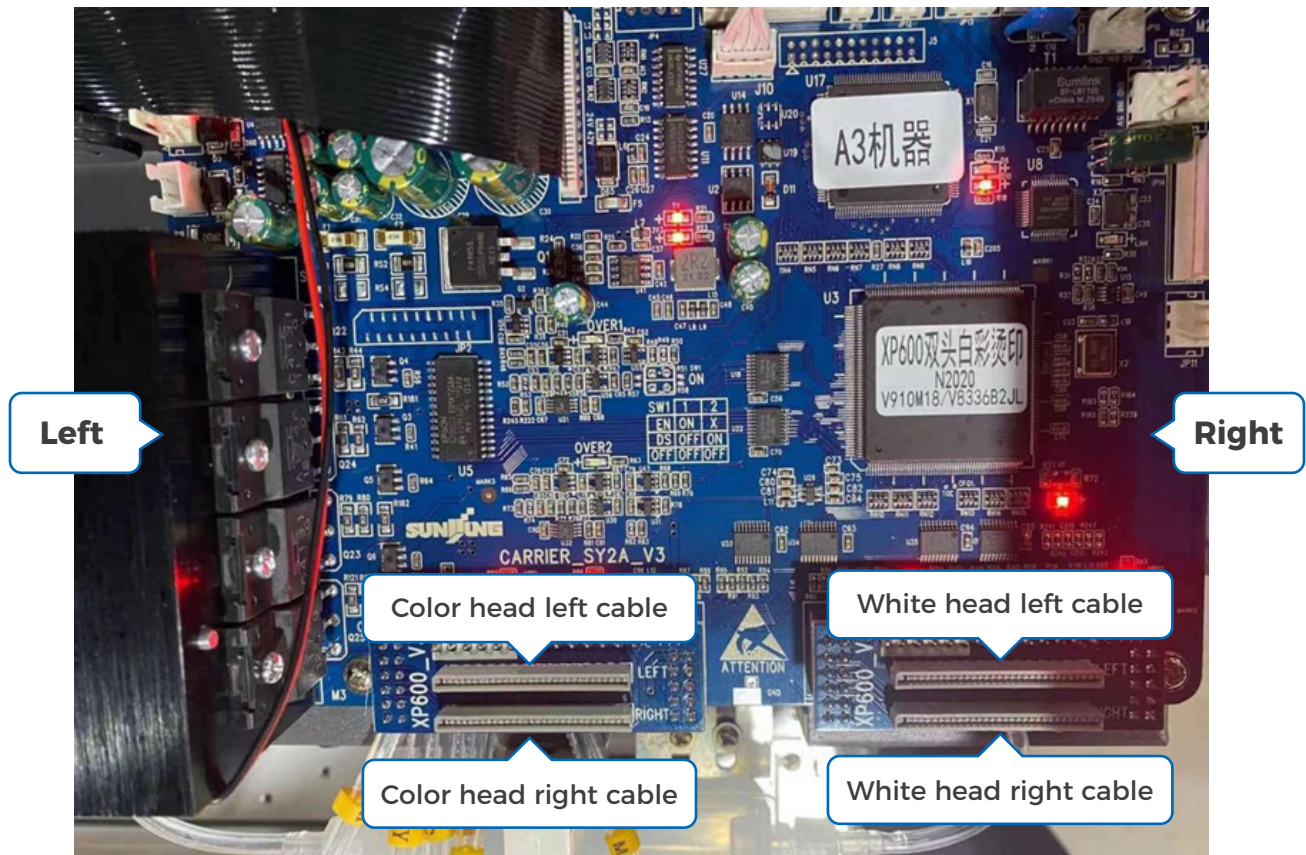


Firstly, please add ink into white ink tank, turn on the DTF printer, adjust white ink recycling knob and the white ink circulation will works, white ink will flow to buffer bottle.

Secondly, use syringe to draw white ink into white ink dampers one by one, and then insert into white print head (while drawing ink to CMYKW dampers, the hole turn up, make ink fill the dampers to full) (CMYK ink same process).



After all dampers are inserted into print heads, turn off the printer (if now machine is ON) and plug the flat cables into the ports on carriage board.



Below actions all done on control panel: (Watch videos)

1. After load ink into all dampers, do a manual pump (operate on control panel, press "Enter" -- select Maintenance -- "enter" -- manual pump -- enter) ink for several seconds (This step is load ink into print heads) (Before this step, make sure the waste ink tubes are inside the waste ink tank).

2. Then do print head cleaning 1~2 times (Press "Enter" -- select Maintenance -- "enter" -- clean nozzle -- enter).
3. Print a nozzles check, make sure all nozzles come out normally (Press "Enter" -- select Maintenance -- "enter" -- nozzle test -- enter).
4. Set X axis origin start printing position (Press left -- carriage move to a right start position -- enter).



IV. Driver Installation

These files will send by email →



XP600-V119
Control
Software



XP600 ICC
Profile



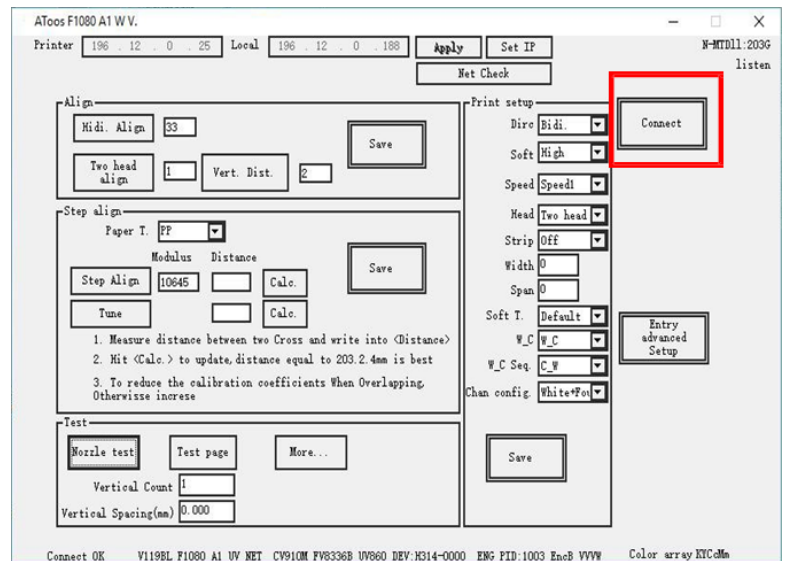
Maintop 6.1 RIP
Software

Extract control software (3 .xp600-V119)
then find this →
Double click the English version, open
the program.

XP600-ATools-V119-20210507.exe	5/7/2021 7:59 PM
XP600-ATools-V119-20210507Eng.exe	5/7/2021 7:58 PM
XP600CW-V119-20210507.zip	5/17/2021 7:20 PM
XP600-W-printX 20210528 6.0.rar	5/29/2021 11:19 AM

Click “**Connect**” →

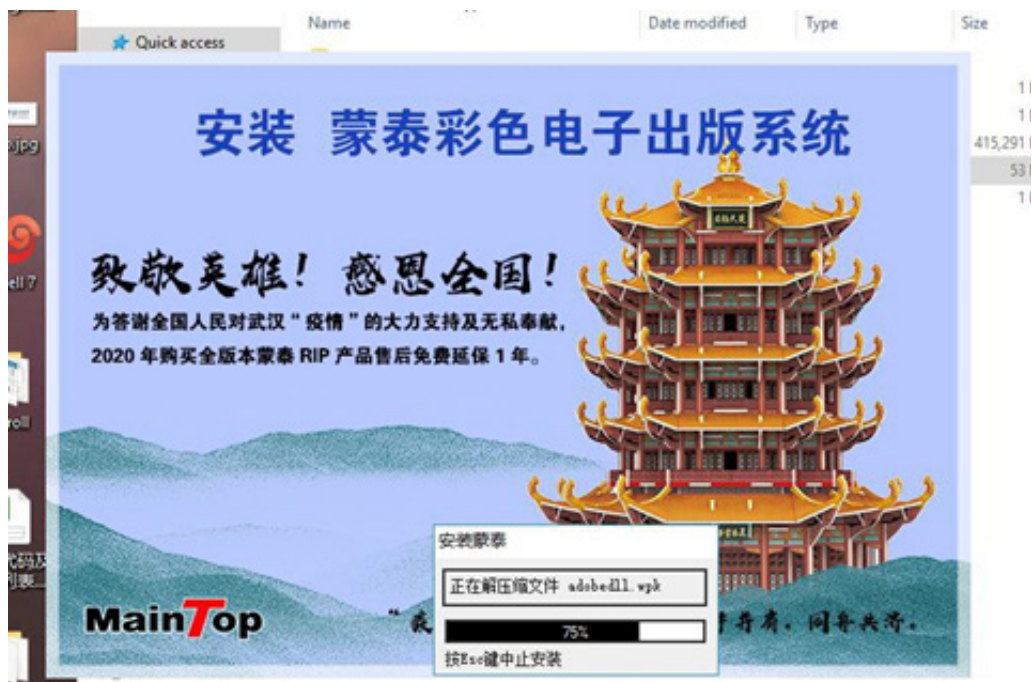
if the grey unchangeable values turn to black changeable values, means connect of the printer is ok. Later, need keep it connected while the printer is working. In this program, normally no need to change anything...

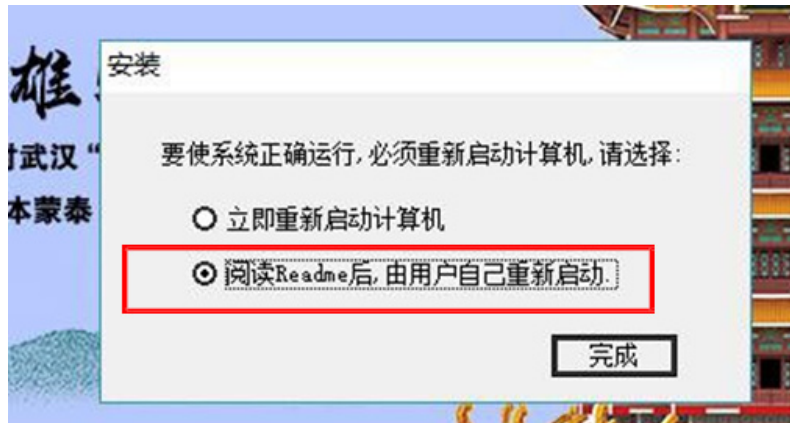
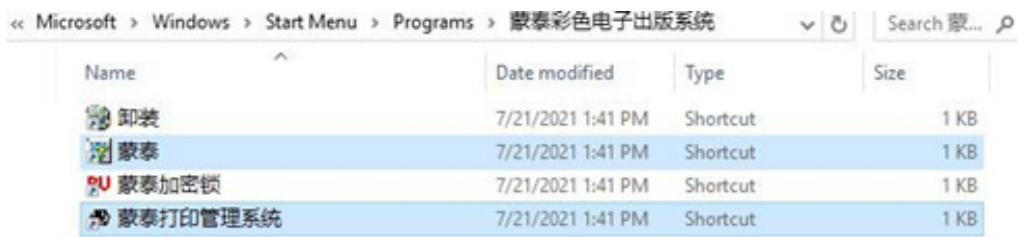


V. Software Installation

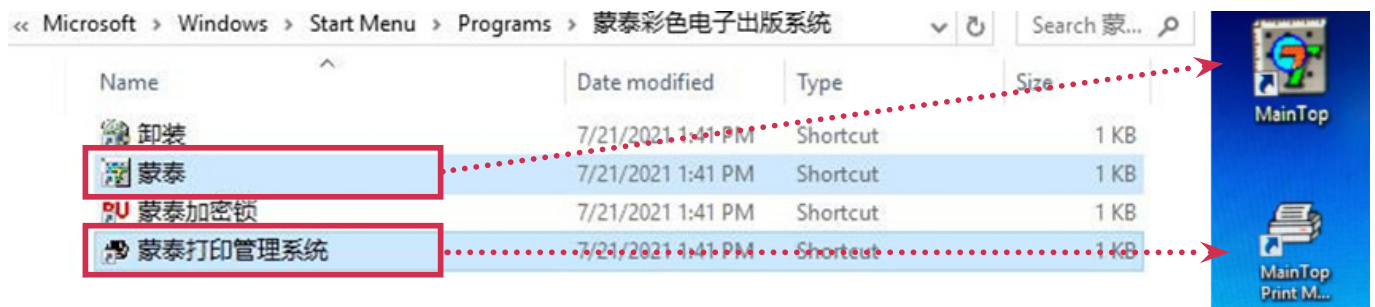
Install Maintop, double click **setup.exe** ↓

INSTALL	7/21/2021 1:41 PM	File folder
AUTORUN.INF	10/14/1997 10:50 ...	Setup Info
INSTALL.ICO	10/12/1997 8:04 PM	ICO 图片
MaintopRIP6.1(20200707).rar	8/18/2020 1:05 PM	WinRAR 压
SETUP.EXE	6/1/2018 2:08 PM	Applicatio
SETUP.INF	5/28/2019 3:53 PM	Setup Info



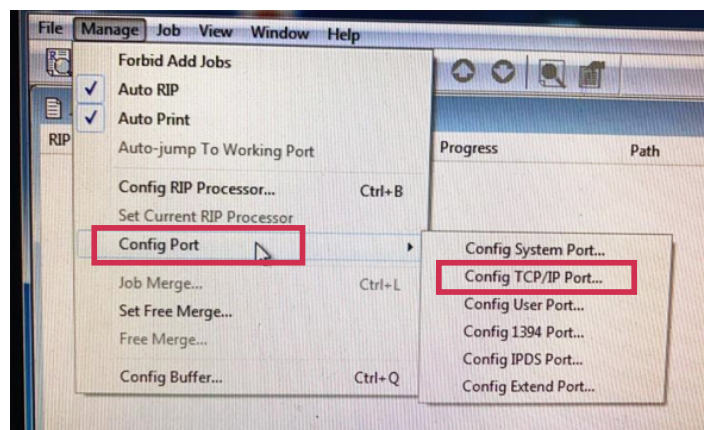
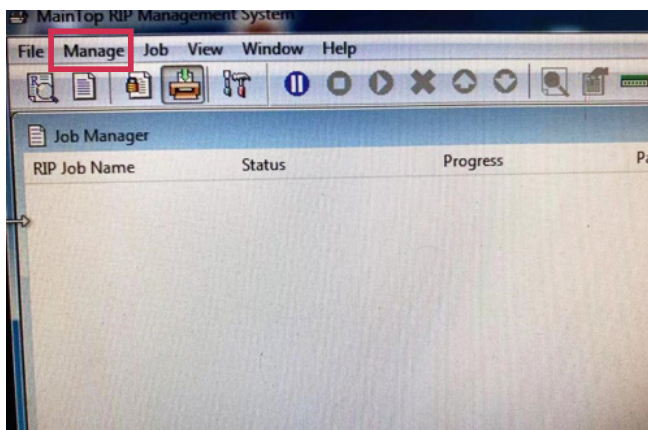


Send “Maintop” and “Maintop Print Manager” two programs to desktop. ↓

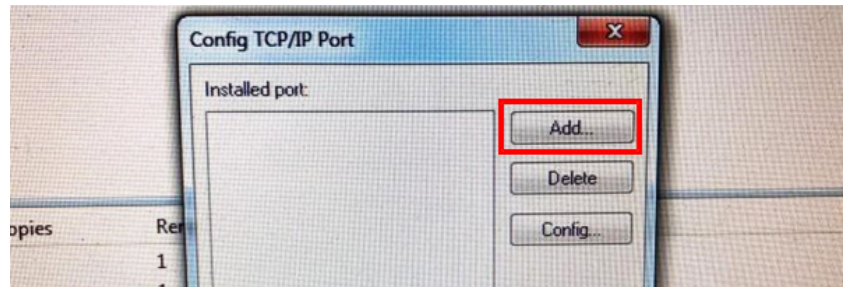


Open “Maintop Print Manager”

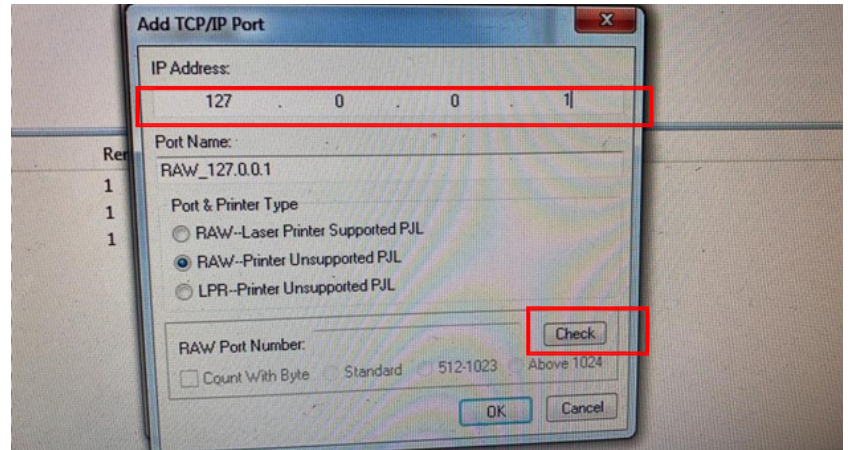
Click “Manager” → “Config Port” → “Config TCP/IP Port...” ↓



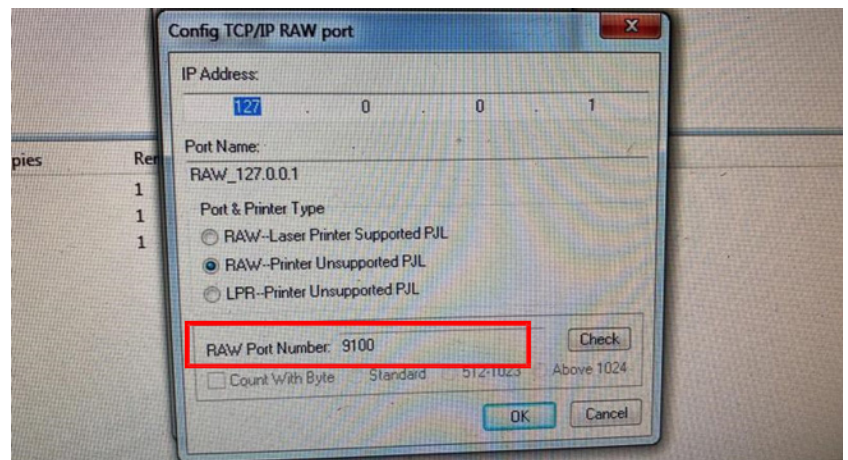
Click **"Add"** →



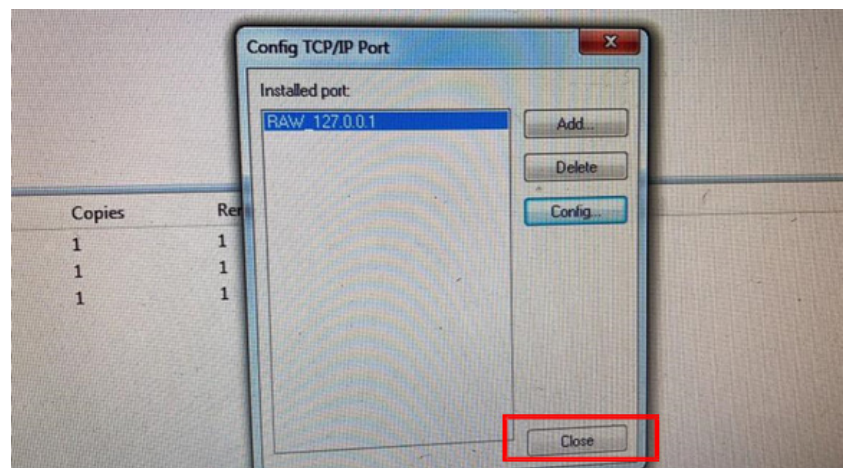
Set **127.0.0.1** at IP Address
Then Click **"Check"** →

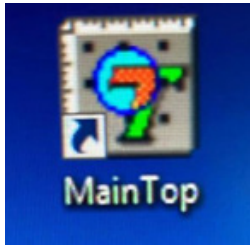


9100 port number shows,
Click **"Ok"** →

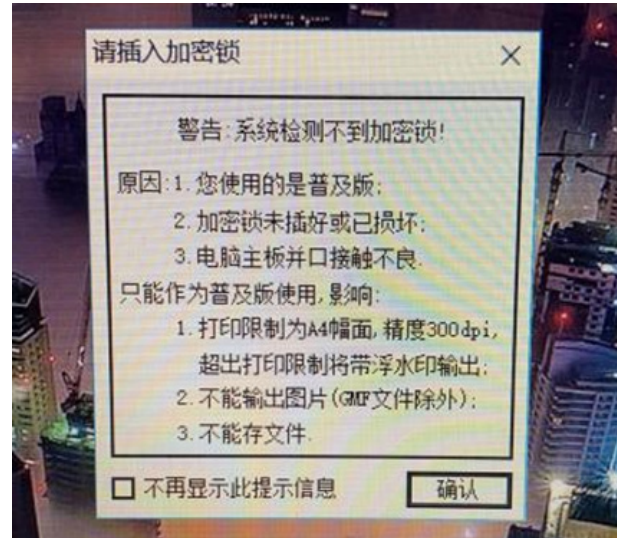


Click **"Close"** →

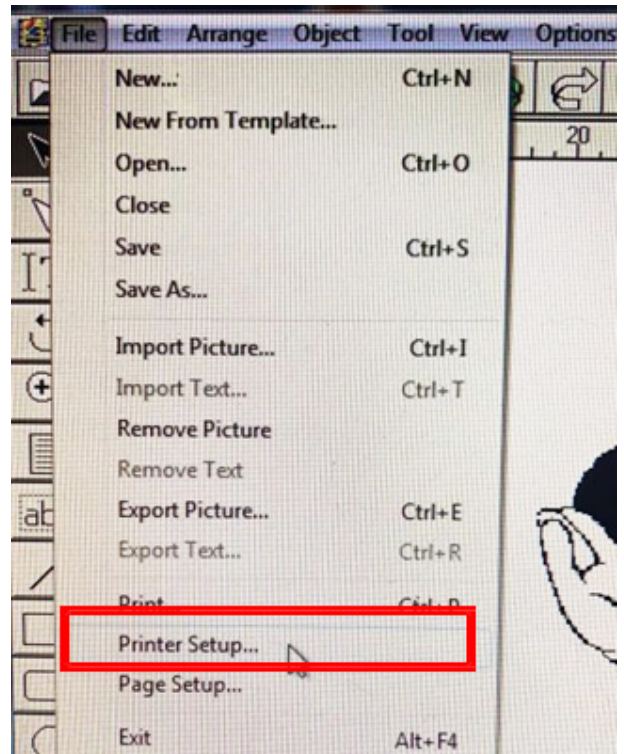




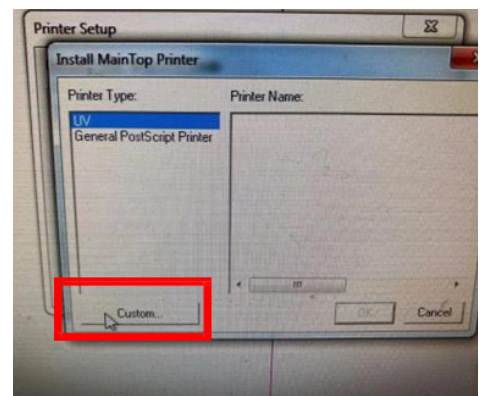
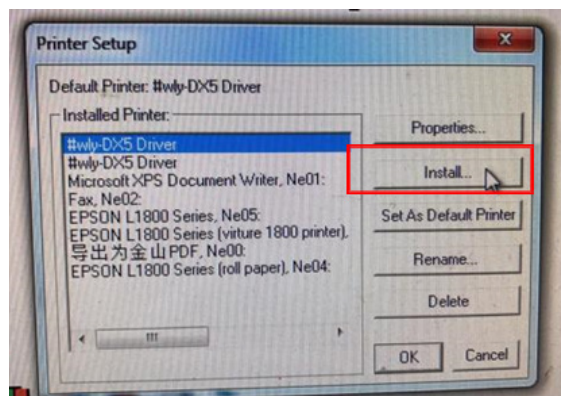
Open “**Maintop**”, If this notice → shows,
Plug maintop dongle into your computer.



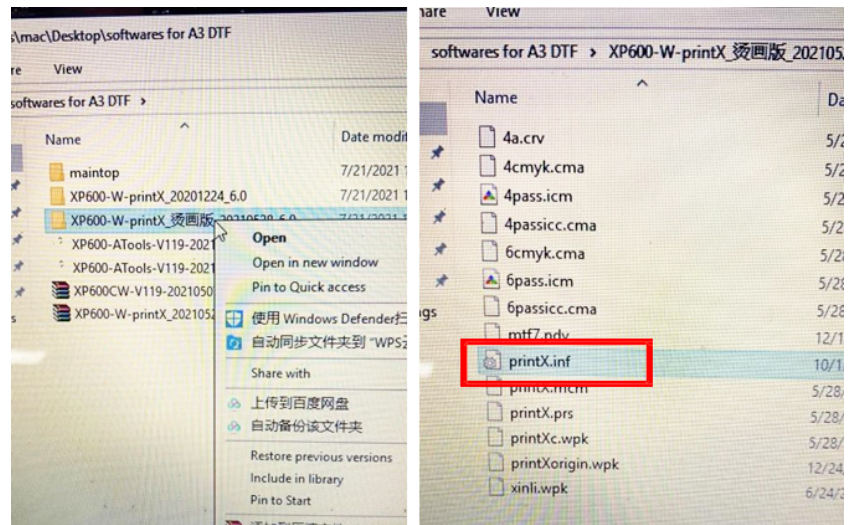
Click “**File**” → “**Printer Setup**” →



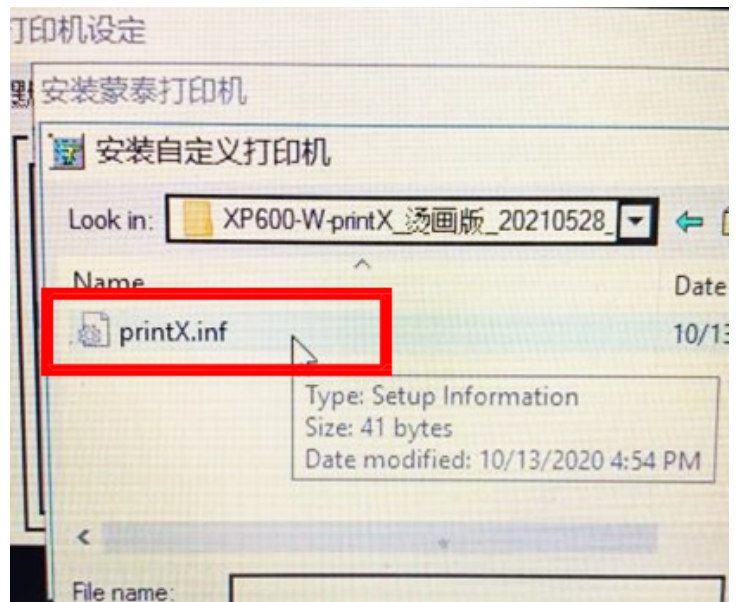
Click “**Install**” →
Click “**Custom**” →



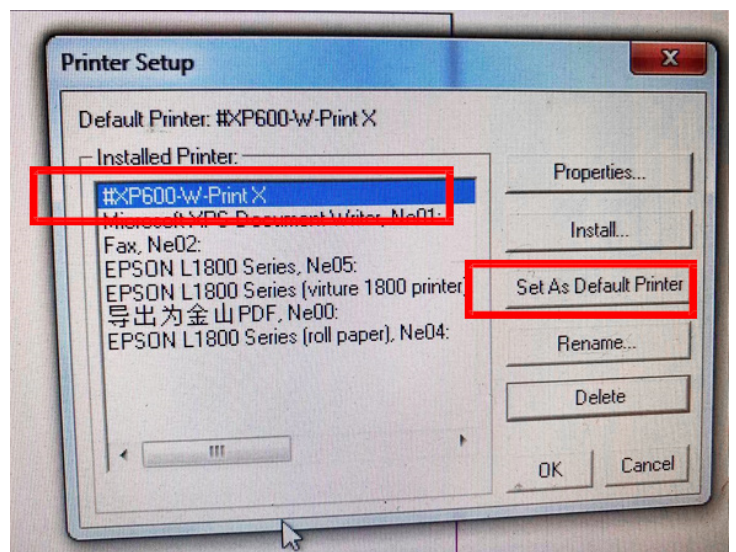
Find this icc driver location →



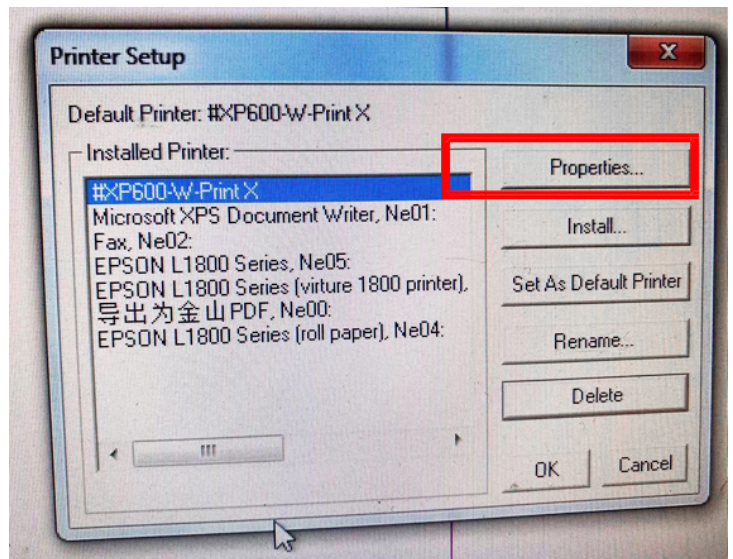
Then find the “**printX.inf**” file,
open it. →



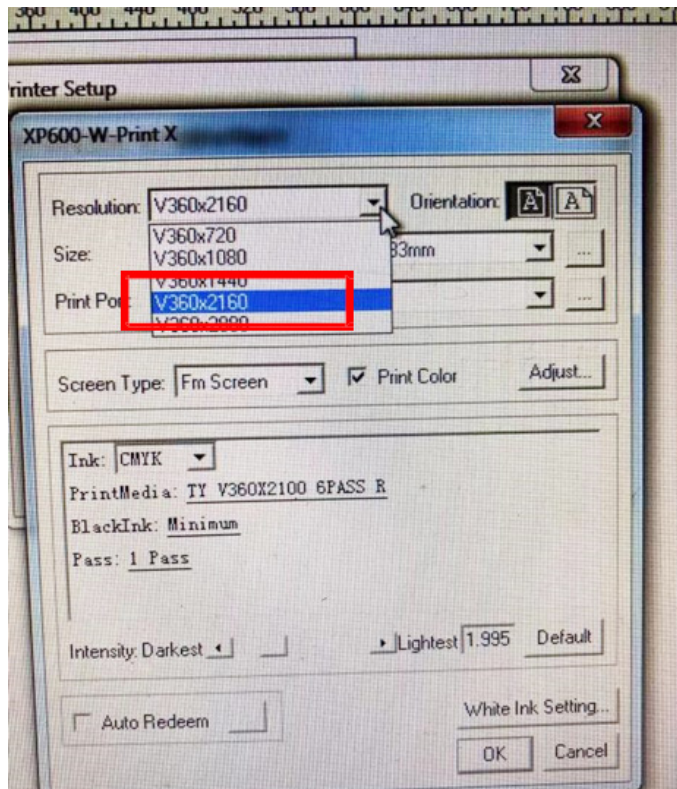
Click “**Set As Default Printer**” →
The driver name is “**#XP600-W-Print X**”



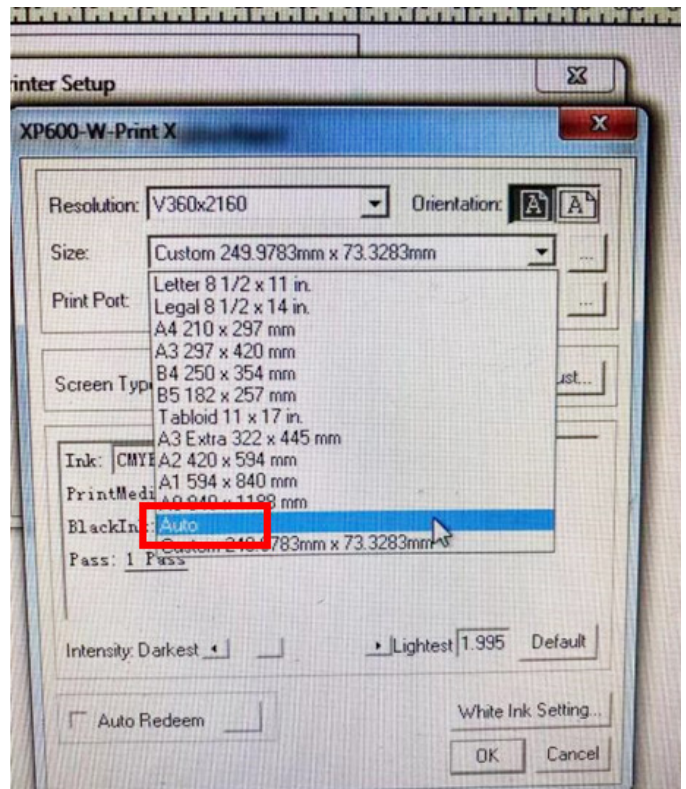
Click “Properties” →



Presolution is “V360x2160”dpi ↓

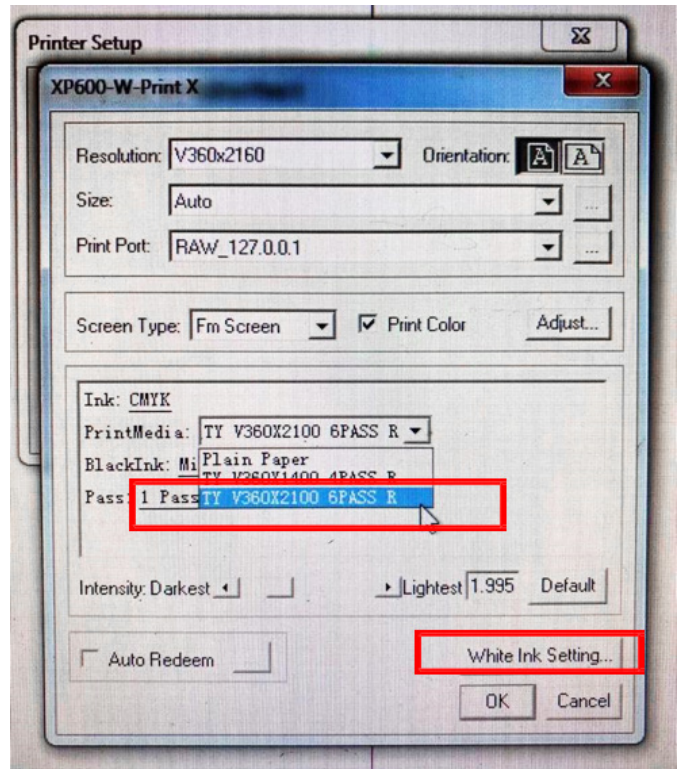
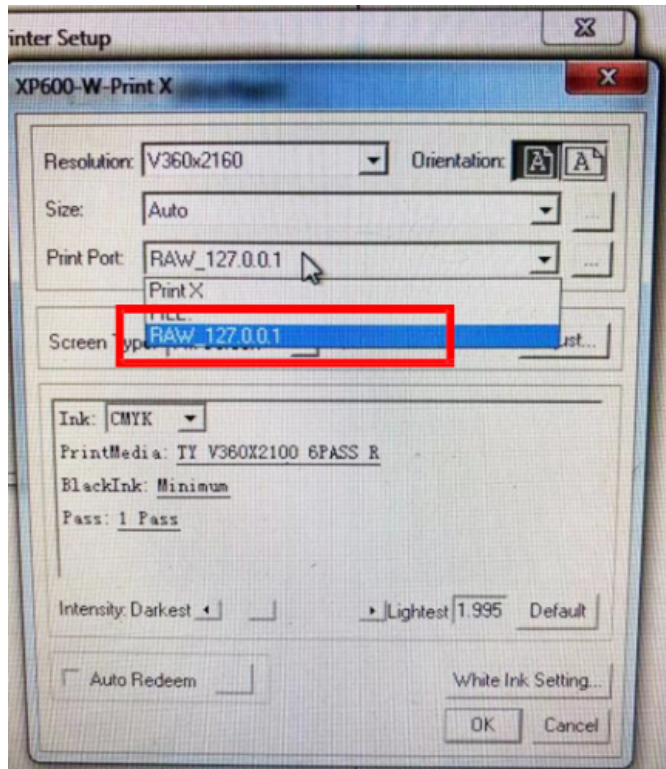


Size is “Auto” ↓



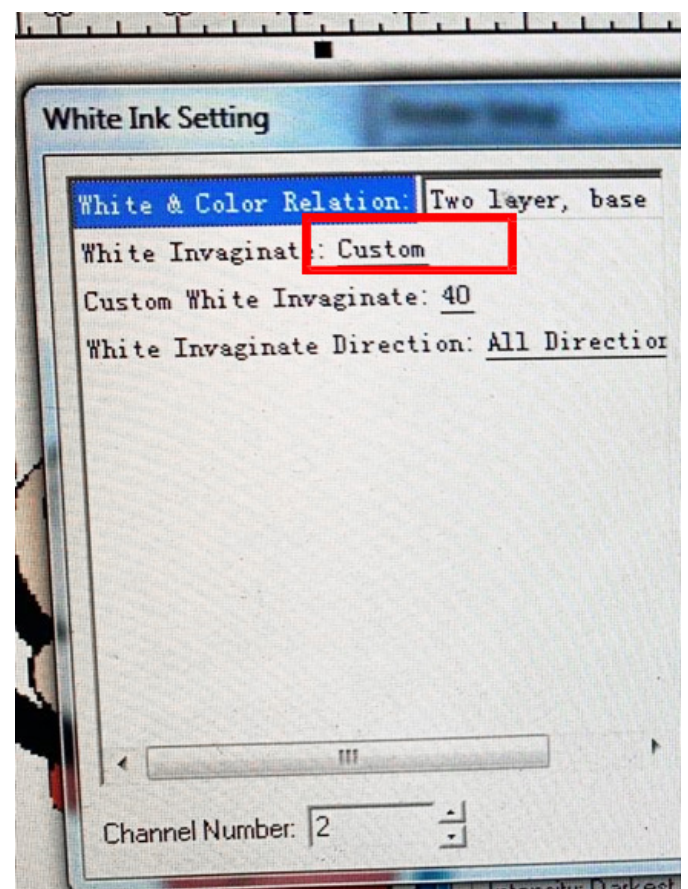
Print port is "127.0.0.1" ↓

Print media: "V360 x 2100 6pass" ↓ **White Ink Setting**



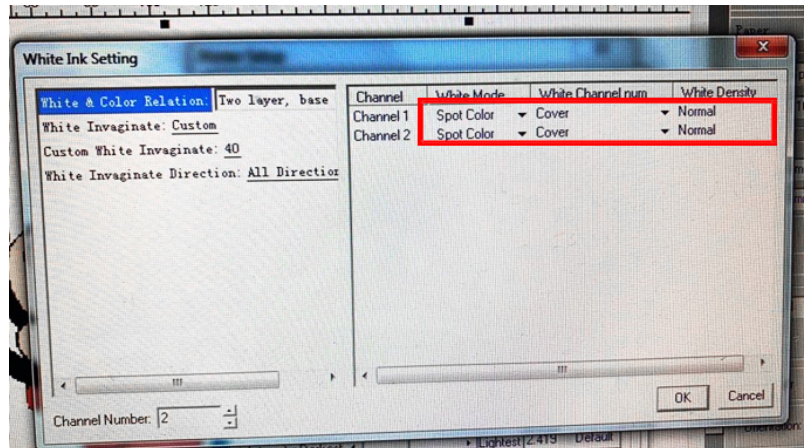
White Invaginate →

Select "Custom", change the value you want. It makes white "Go inside", same to "Contract" pixels in PS. →

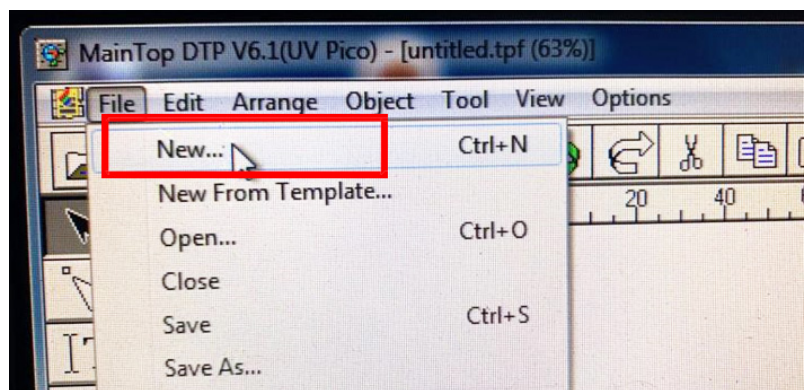


White mode:

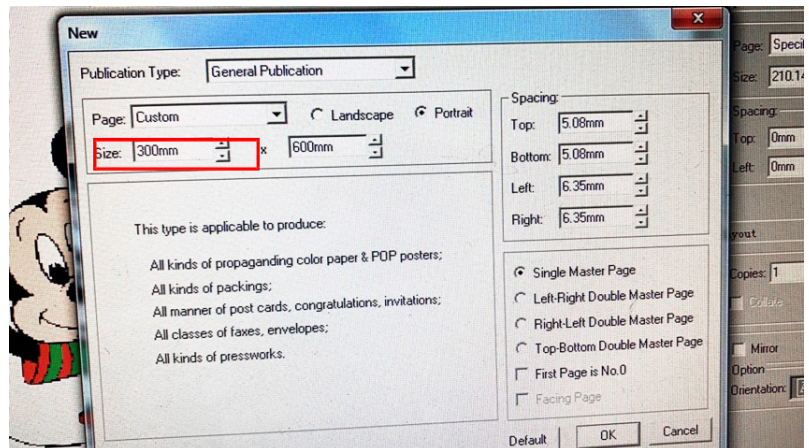
Both select **"Spot Color"** **"Cover"**
and select white ink density
you want... →



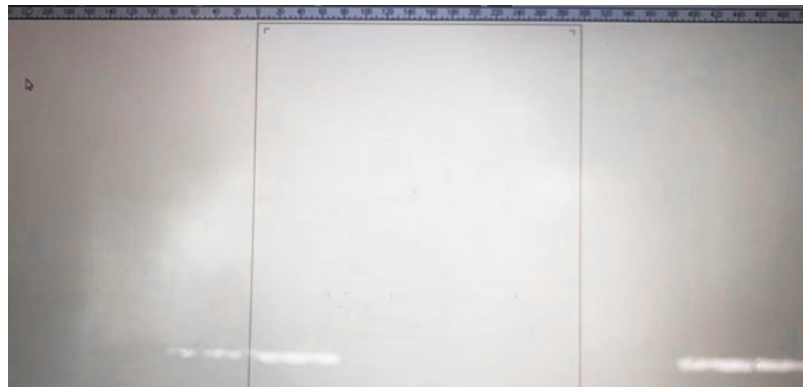
Click **"File"** → **"New"** →



Size according to your printer
printable width, like 300mm. →

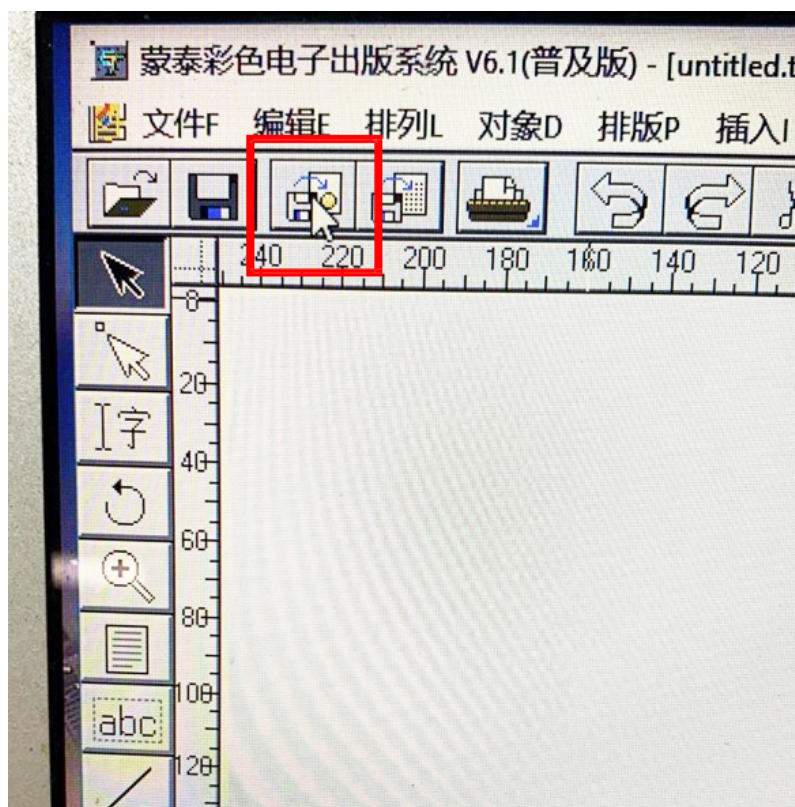


Get a canvas →



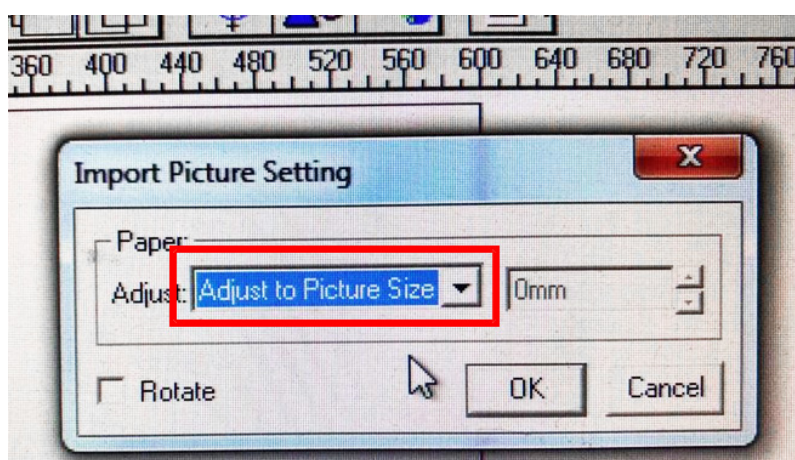
Import Picture →

Import Tif file created from PS,
which already have two white
spot channels "W1 W2".

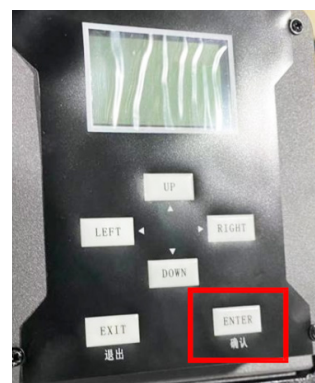
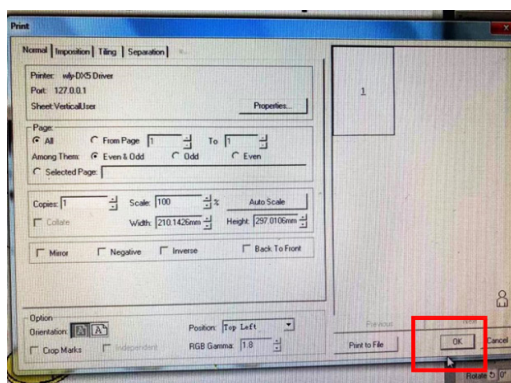
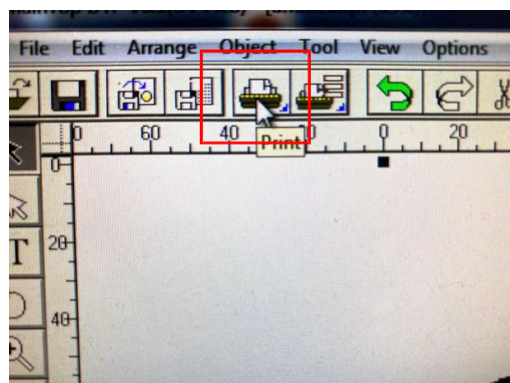


Adjust to Picture Size →

The image width should be less
than 300mm.



Click "Print" ↓



When your printer is working, press “**ENTER**” button to pause it, press “**EXIT**” button, the control panel display screen will pop up “whether to continue printing”, select Yes to continue printing, select No to cancel printing.

VI. Maintenance

1. Only experienced operator could open the cabinet, be noted following measures;
2. Don't use abrasive cleaner to clean the machine surface.
3. Check the rotation parts regularly and fill high-temperature grease to lubricate the two bearings of heating rollers.
4. Do not wash the machine with water. This can damage the electrical circuits, cause electrical shock or corrosion.
5. During maintenance, don't run the machine.
6. During maintenance, don't change, move and dismantle the safety parts. Make sure the safety parts before using.
7. Cut the power supply before dismantling and assembly.

WARRANTY CARD

MODEL		LOT #	
BUYER		DATE	
SELLER		TEL	

Notes

- i. The warranty card should be filled by seller and kept by buyer. Alterations are prohibited.
- ii. The guarantee period is 1 years. The repair is free of charge within 6 months and will be charged with material and labor cost after 6 months.
- iii. No free repair is available for any damages caused by the improper use.