

# **Heat Printing Equipment Platform Cart USER MANUAL**



**MAX: 300KG/500KG**

## **1. Brief Instruction**

### 1. Use & applicable range

It is a convertible vehicle using for lifting and transporting in workshop, warehouse and wharf, etc. Its rated capacity is 300kgs.

### 2. Characteristics:

- I. Use wave the handle to lift the table, and the table's height is fixed, which can avoid the auto-lowering down like the hydraulic device.
- II. Push to make the four wheels running and move the cart by hand.

### 3. Basic Data:

Load capacity:	300kg/660lb	500kg/1100lb
Maximum Height of Table:	1000mm	1000mm
Minimum Height of Table:	440mm	550mm
Dimension of Table:	950×600mm	1000x650mm
Net Weight:	60kg	70kg

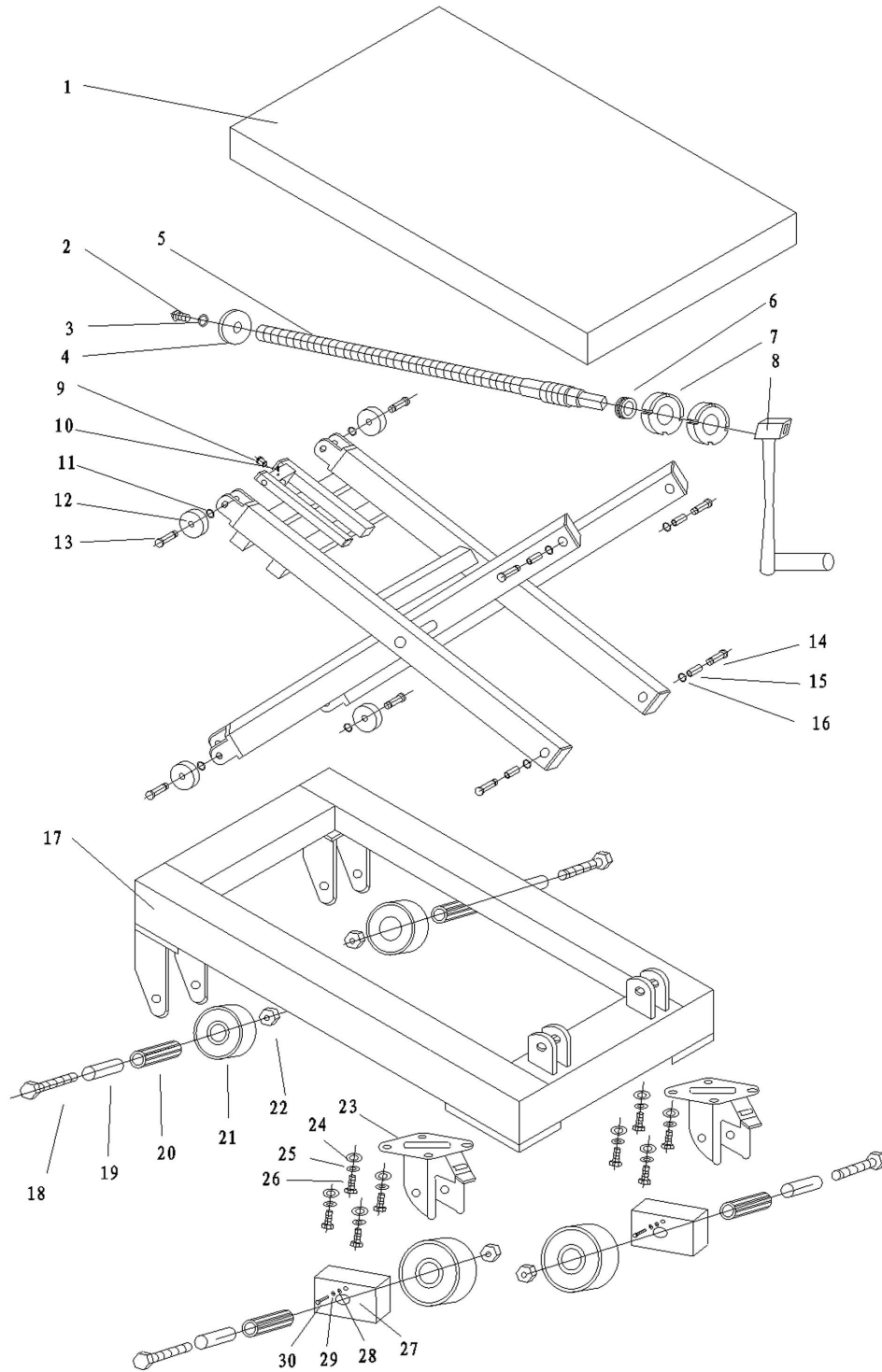
### 4. Operation

Firstly, fix the table by the brake in the swivel wheel holder. Wave the handle to lift up and lower down the table.

### 5. Warning!

- I. Operate strictly according to the instruction manual.
- II. Do not use the cart on slop.
- III. Do not overload the goods.
- IV. Keep feet and hand away from under the lowering table.
- V. Locked the swivel wheel holder before you lift and lower down the table.

# TH30 MECHNICAL LIFT TABLE



### TH30/50 MECHANICAL LIFT TABLE

No.	Description	Q'ty	No.	Description	Q'ty
1	Table	1	23	Swivel Wheel Holder	2
2	semicircle Bolt	1	24	Flat Washer	8
3	Spring Washer	1	25	Spring Washer	8
4	Flat Washer	1	26	Hex Cap Bolt	8
5	Screw Rod	1	27	Dust Cover	2
6	Bearing	1	28	Flat Washer	2
7	Set Screw	2	29	Spring Washer	2
8	Handle	1	30	Hex Cap Bolt	2
9	Copper Cover	1			
10	Set Screw	1			
11	C-ring	2			
12	Roller Guide	2			
13	Shaft	2			
14	Shaft	2			
15	Bushing	2			
16	C-ring	2			
17	Frame	1			
18	Hex Cap Bolt	4			
19	Bushing	4			
20	Bearing	4			
21	Wheel	4			
22	Nut	4			