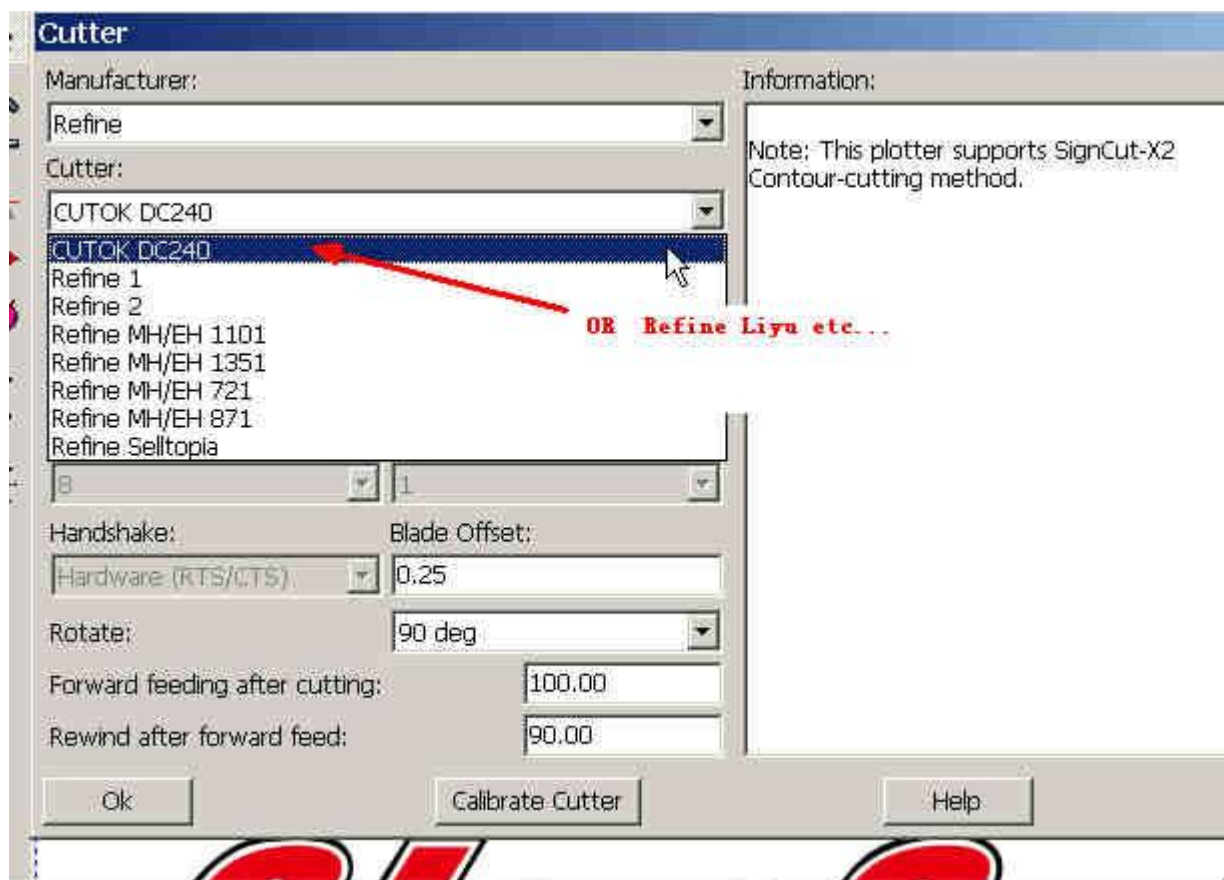
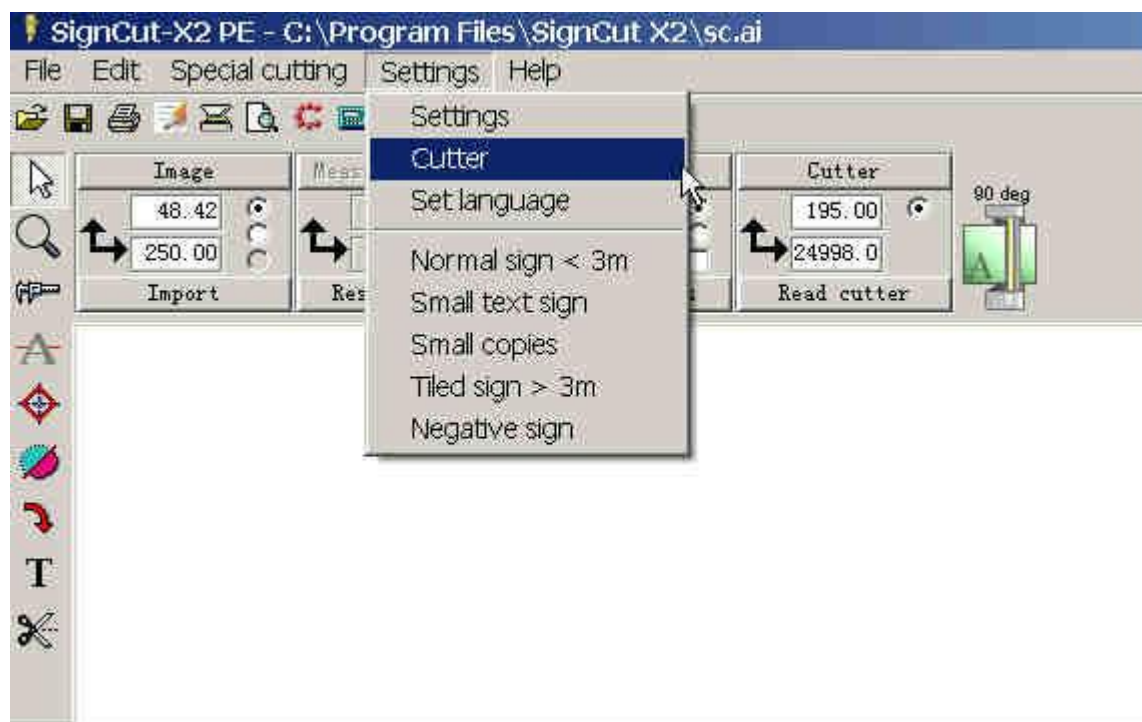




SignCut-X2 set





Cutter

Manufacturer:

Cutter:

Device:

COM1
COM2
LPT1
CUTOK DC240
Write to file
Summa USB
Graphtec USB
TCP/IP

Hardware (RTS/CTS)

Rotate:

Forward feeding after cutting:

Rewind after forward feed:

Information:
Note: This plotter supports SignCut-X2
Contour-cutting method.

Ok Calibrate Cutter Help