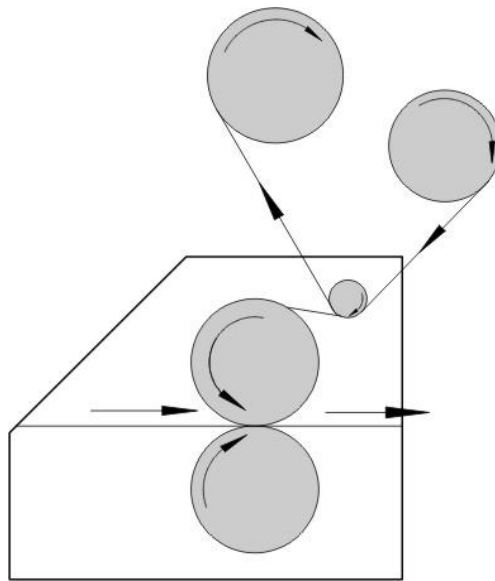


Laminating Procedures



Preparation

- 1) Raise the top roller.
- 2) Turn off the roller direction switch; turn the emergency switch clockwise to the top position and turn the speed - adjusting knob to '0';
- 3) Turn on the main power switch;
- 4) Take one roll cold lamination film, fix it on the film unwind shaft and place the front edge of the material on the upper roller through the idler roller.
- 5) Wrap the picture to be laminated around the paper roll and fix the paper roll on the picture-supporting roller.

P. S.: The film unwind roller and liner rewind roller are equipped with standard 3 - inch aluminum rolls.

This laminator is equipped with three function shaft: the film – unwind shaft, the liner - rewind shaft and the prints - unwind shaft.

Two black gap adjusting knobs can be found on each side frame. The knobs can increase or decrease pressure by turning clockwise or counter - clockwise.

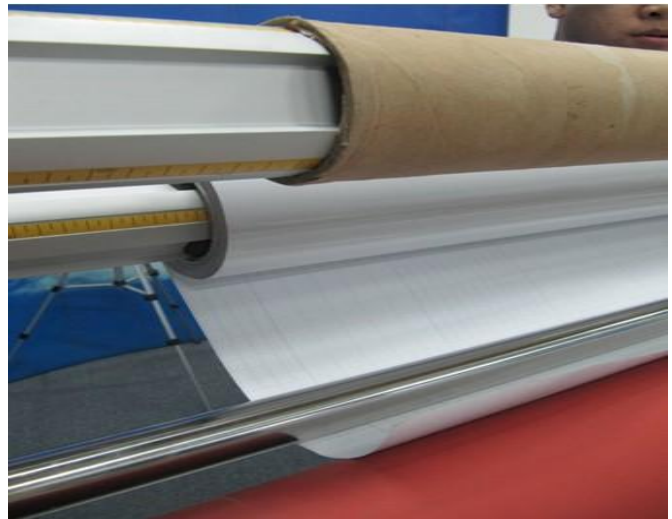
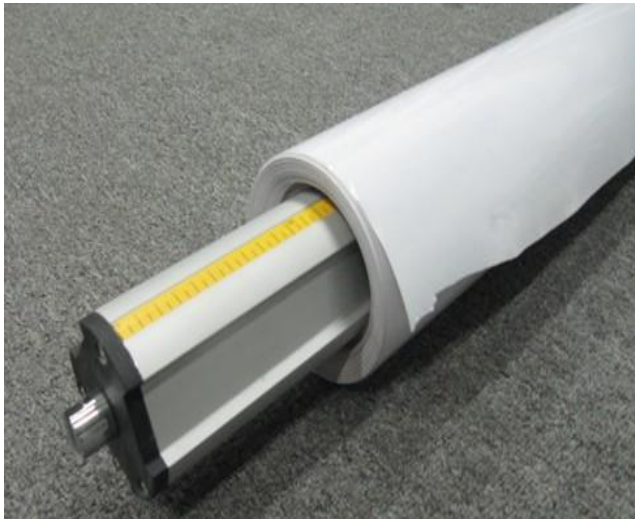
I. How to laminate the long pictures?

Step 1. Install cold laminating film

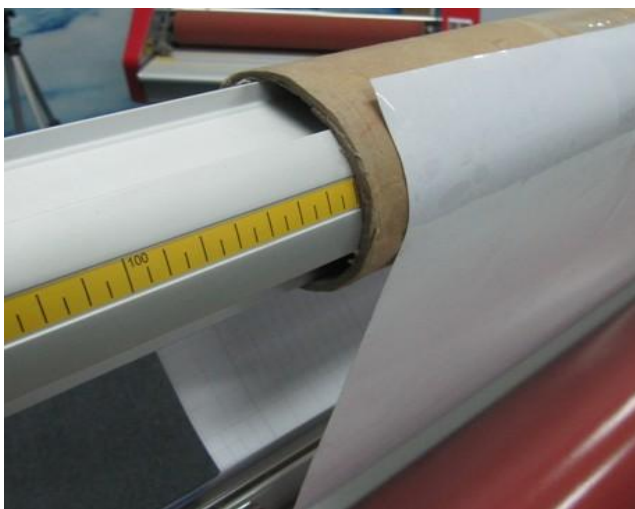
Insert film unwind shaft into the cold lamination film's tube core. No rotating unwind shaft to prevent block between adhesive strips on roller and tube core inside.

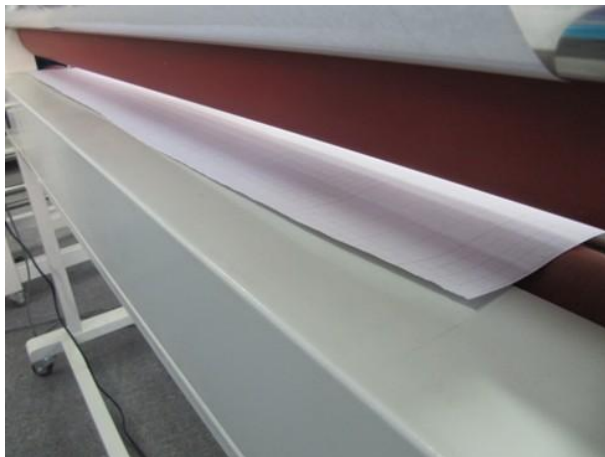
Make sure the cold laminating film is installed in the middle of film - unwind shaft.

Step 2. Put shaft back to its position, be sure lamination with glue side should be placed upward.

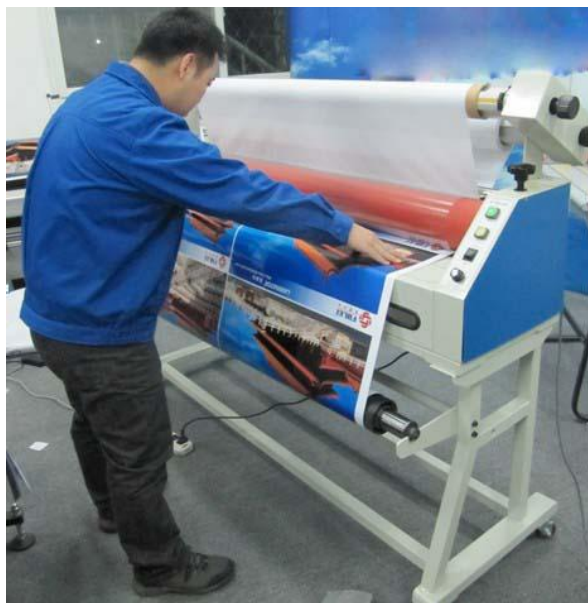


Step 3. Pull lamination film through idler bar and stick edge on liner rewind core; Using knife to separate film and liner paper then peel the lamination wrap it on top roller (It should be smooth here) .Using one small piece of guide paper (Width same or bigger size than lamination film, depth around 1m) before prints in case waste, and then lower down top roller by knobs till idler position using self weight of top roller w / o extra pressure. Be sure the laminating is smooth without wrinkle at the very beginning.





Step 4. Power "OFF" the machine, set direction to F, rotate speed setting at very low value like 2. Insert prints and align both sides refer to laminating film, you can look the front working table mark ruler also, make sure the prints is straight and smooth enough, and then press Pedal switch to run machine. Then press button "ON" and release pedal switch running at auto mode. You can adjust tension by rotating brake knob to get good laminating result.



Raising and lowering the rollers: The rollers can be raised or lowered by turning the knobs clockwise or counter-clockwise. When turning counter-clockwise and the two rollers meet each other, the hand wheel is turned with ease at this 'space position'. Keep on turning knobs to increase the pressure of the rollers. It has been left to the operator's device to choose the proper pressure according to the material at hand. (In most cases, we recommend the 'Idler position'.)

A few tips

Before working on the first picture, please have someone to hold the edge of the material to avoid it slipping through the bottom roller.

To avoid tilted laminating, please ensure a right angle between the picture and the work panel.

If operated properly and the picture still tilts, and then take the following measures:

Decrease the pressure of the roller to the tilting side (Please refer to Adjusting the Pressure of the Rollers);

During the operation, press the picture on its tilted side to increase the pressure.

Adjust the damp of the rollers during the operation to ensure the quality of the laminated picture.

II. How to laminate the short pictures?

Step 1. Power "OFF" machine, set direction to R, rotate speed setting at very low value like 2. Put the Pedal switch at the back of the machine.

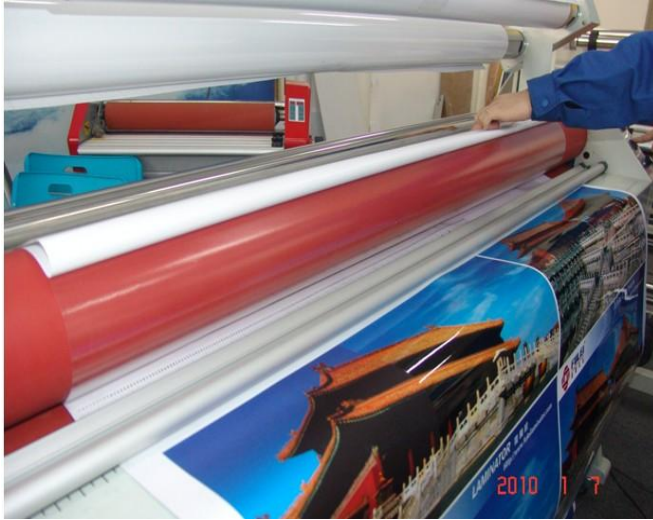
Step 2. Cut the lamination film the same size as to be laminated prints, put lamination (glue side toward to prints) on the top of prints and align going through the rollers, and then put the knob at idler position.



Step 3. Separate film and liner paper, fold liner around 10cm, press pedal switch to run till the prints and film ends then stop, after rotate roller a bit backwards to rear working table manually in case the prints run out of rollers.

Step 4. Peel liner paper backwards and put it through idler bar, put the pressure plate in front of roller.

Set control panel direction to F, power ON the machine or Press pedal switch, manually peel liner paper at the rear of machine.



III. How to mount sheet pieces?

Step 1. Align the adhesive prints to PS foam board.

Step 2. Stick beginning of prints to PS foam board by hand or by machine like above mentioned (Read “how to laminate short pictures step 3” for reference).



Step 3. Panel control: Power OFF, set direction F, and set speed to number 4, put the pedal switch at the rear of machine.

Step 4. Insert the beginning end of foam board into rollers and adjust roller to Idler Position.



Step 5. Manully peel liner, and then press Pedal switch to run mounting.

Step 6. Mouting finish.

